

New Ownership Presents: GATEWAY POINTE BUSINESS PARK

2601-2715 Jahn Avenue NW, Gig Harbor, WA 98335

BEST PRICES IN GIG HARBOR



**IDEAL USES: Professional Office/Medical, Showroom,
Wholesale Retail, Recreational, Winery/Brewery,
Educational, Salon, Boutique**

729 SF - 10,380 SF Available
\$12.50 - \$13.50/SF, MODIFIED GROSS

FEATURES:

- Attractive Architectural Design & Business Park Atmosphere
- Great Visibility to 70,000+ Cars/Day on Hwy 16
- Quick Access to Tacoma - Half Mile from Off-Ramp
- Buildings Include Heating & Air Conditioning
- Tall Ceilings with Sky Lights & Balconies
- Extensive Window Line Provides Abundant Natural Light
- Buildings Available for Purchase:
 - Building C: \$1,771,000 (\$171/SF)
 - Building D: \$1,771,000 (\$171/SF)
 - Building E: \$1,879,000 (\$170/SF)
 - Building F: \$1,859,000 (\$179/SF)

For more information, contact:

KELLER WILLIAMS

Mike Armanious, CCIM
(253) 988-6115
marmanious@kw.com

ROSEN~HARBOTTLE CRE

Caleb Farnworth, CCIM
(425) 289-2235
calebf@rosenharbottle.com

Keller Williams | 7525 28th Street W, University Place, WA
phone: (253) 460-8640 fax: (253) 460-8650 | www.kw.com

The information provided has been obtained from sources believed reliable. While we do not doubt its accuracy, we have not verified and make no guarantee, warranty or representation about it. It is your sole responsibility to independently confirm its accuracy and completeness.

GATEWAY POINTE BUSINESS PARK

2601-2715 Jahn Avenue NW, Gig Harbor, WA 98335

Availability

- Click on Suite Number to jump to Floor Plan -

| SUITE | SQUARE FEET | CONTIGUOUS | RENT/MO | \$/SF | AVAILABLE |
|---------------------------|-------------|------------|----------|---------|-----------|
| A-01 | 2,311 | 5,244 | \$2,600 | \$13.50 | 30 DAYS |
| A-04 | 1,395 | 5,244 | \$1,569 | \$13.50 | NOW |
| A-06 | 1,538 | 5,244 | \$1,730 | \$13.50 | NOW |
| A-12 | 729 | | \$759 | \$12.50 | NOW |
| C-04 | 1,391 | | \$1,565 | \$13.50 | NOW |
| D-01 | 2,948 | 8,088 | \$3,317 | \$13.50 | NOW |
| D-07 | 2,279 | 8,088 | \$2,564 | \$13.50 | NOW |
| D-10 | 2,861 | 8,088 | \$2,980 | \$12.50 | NOW |
| E-01 | 1,544 | 3,822 | \$1,737 | \$13.50 | NOW |
| E-07 | 1,514 | 3,822 | \$1,577 | \$12.50 | NOW |
| E-08 | 764 | 3,822 | \$796 | \$12.50 | NOW |
| E-12 | 797 | | \$830 | \$12.50 | NOW |
| F-05 | 1,362 | | \$1,532 | \$13.50 | NOW |
| F-10 | 1,756 | | \$1,829 | \$12.50 | NOW |
| H-06 | 2,940 | | \$3,308 | \$13.50 | NOW |
| Full Bldg | 10,380 | | \$11,245 | \$13.00 | 60 DAYS |

Keller Williams | 7525 28th Street W, University Place, WA
phone: (253) 460-8640 fax: (253) 460-8650 | www.kw.com

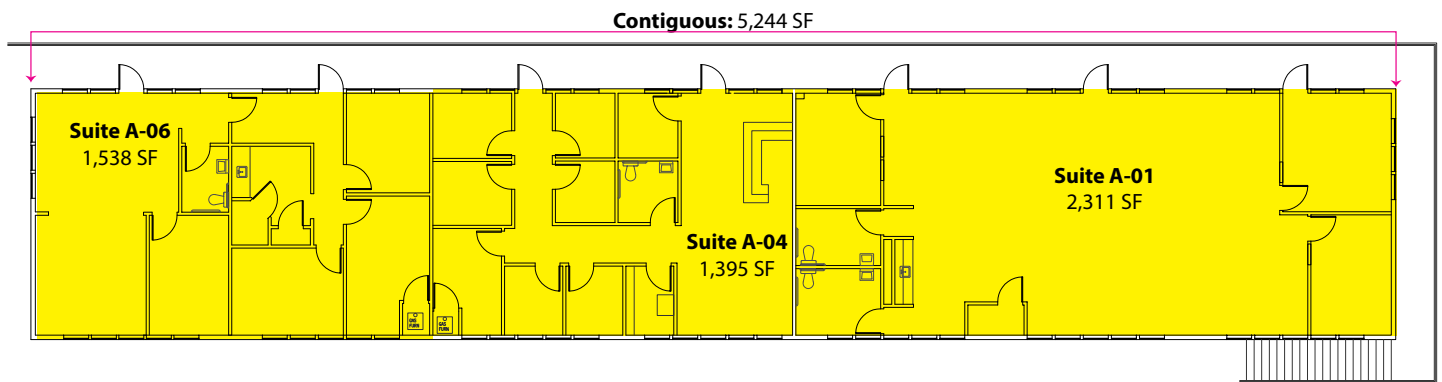
The information provided has been obtained from sources believed reliable. While we do not doubt its accuracy, we have not verified and make no guarantee, warranty or representation about it. It is your sole responsibility to independently confirm its accuracy and completeness.

GATEWAY POINTE BUSINESS PARK

2601-2715 Jahn Avenue NW, Gig Harbor, WA 98335

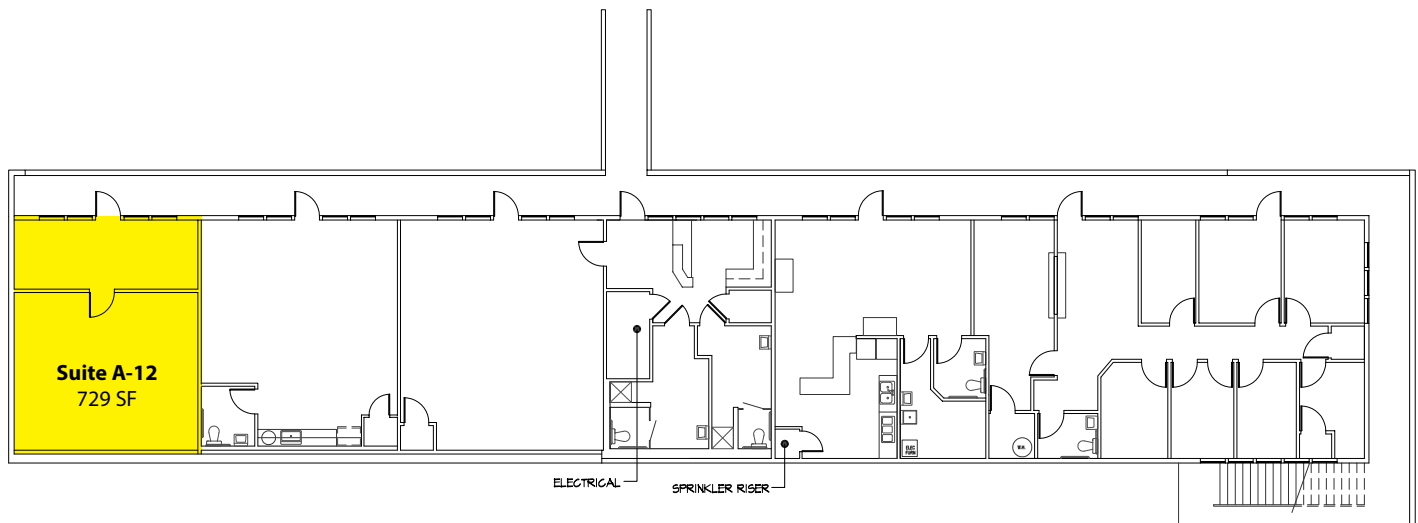
Building A - 2nd Floor

| Suite | Square Footage |
|------------|----------------|
| A-01 | 2,311 SF |
| A-04 | 1,395 SF |
| A-06 | 1,538 SF |
| Contiguous | 5,244 SF |



Building A - 1st Floor

| Suite | Square Footage |
|-------|----------------|
| A-12 | 728 SF |



Keller Williams | 7525 28th Street W, University Place, WA
phone: (253) 460-8640 fax: (253) 460-8650 | www.kw.com

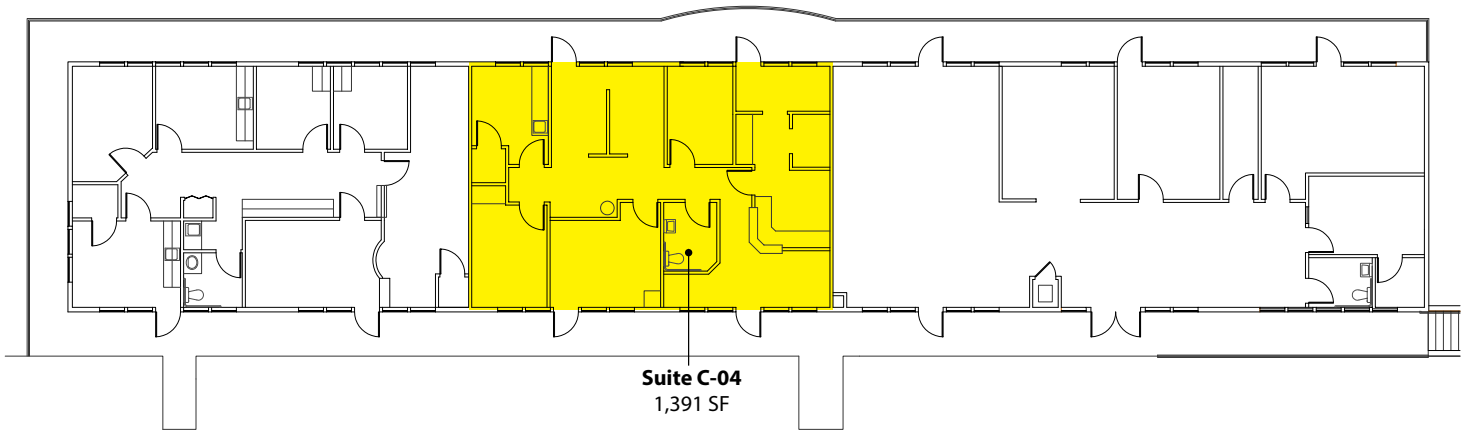
The information provided has been obtained from sources believed reliable. While we do not doubt its accuracy, we have not verified and make no guarantee, warranty or representation about it. It is your sole responsibility to independently confirm its accuracy and completeness.

GATEWAY POINTE BUSINESS PARK

2601-2715 Jahn Avenue NW, Gig Harbor, WA 98335

Building C - 2nd Floor

| Suite | Square Footage |
|-------|----------------|
| C-04 | 1,391 SF |



Keller Williams | 7525 28th Street W, University Place, WA
phone: (253) 460-8640 fax: (253) 460-8650 | www.kw.com

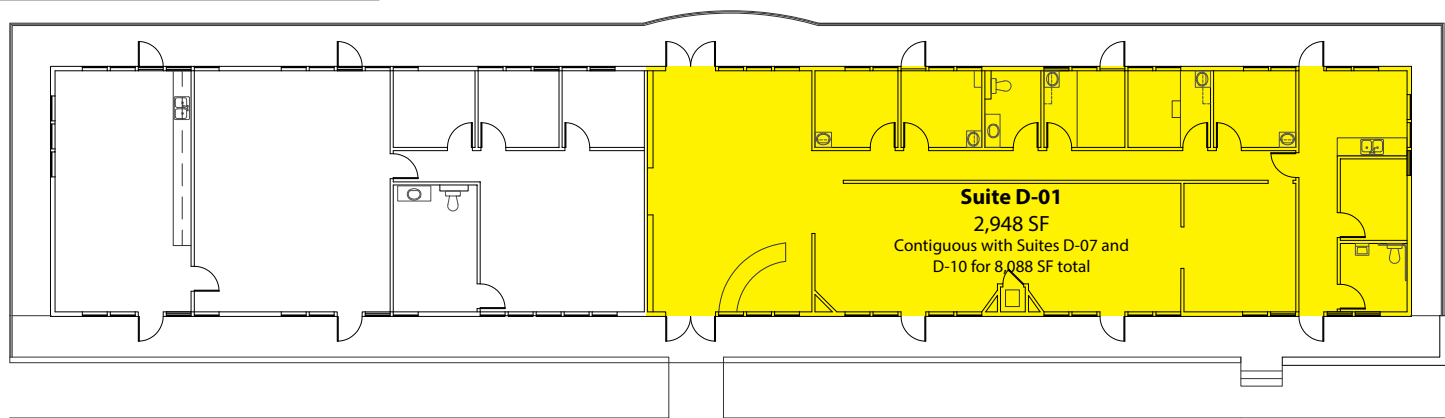
The information provided has been obtained from sources believed reliable. While we do not doubt its accuracy, we have not verified and make no guarantee, warranty or representation about it. It is your sole responsibility to independently confirm its accuracy and completeness.

GATEWAY POINTE BUSINESS PARK

2601-2715 Jahn Avenue NW, Gig Harbor, WA 98335

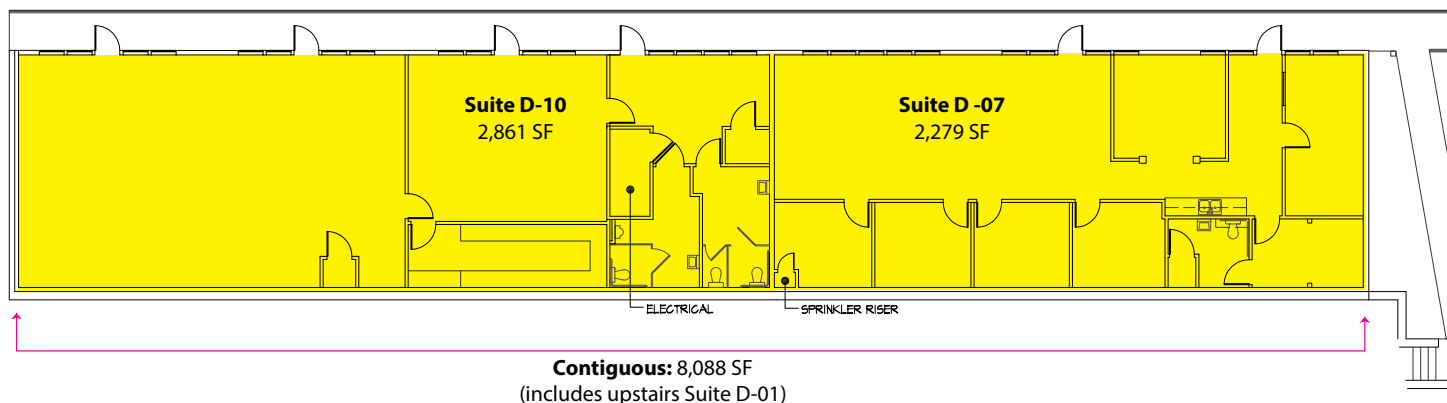
Building D - 2nd Floor

| Suite | Square Footage |
|------------|----------------|
| D-01 | 2,948 SF |
| Contiguous | 8,088 SF |



Building D - 1st Floor

| Suite | Square Footage |
|------------|---------------------|
| D-07 | 2,279 SF |
| D-10 | 2,861 SF |
| Contiguous | 5,140 SF - 8,088 SF |



Keller Williams | 7525 28th Street W, University Place, WA
phone: (253) 460-8640 fax: (253) 460-8650 | www.kw.com

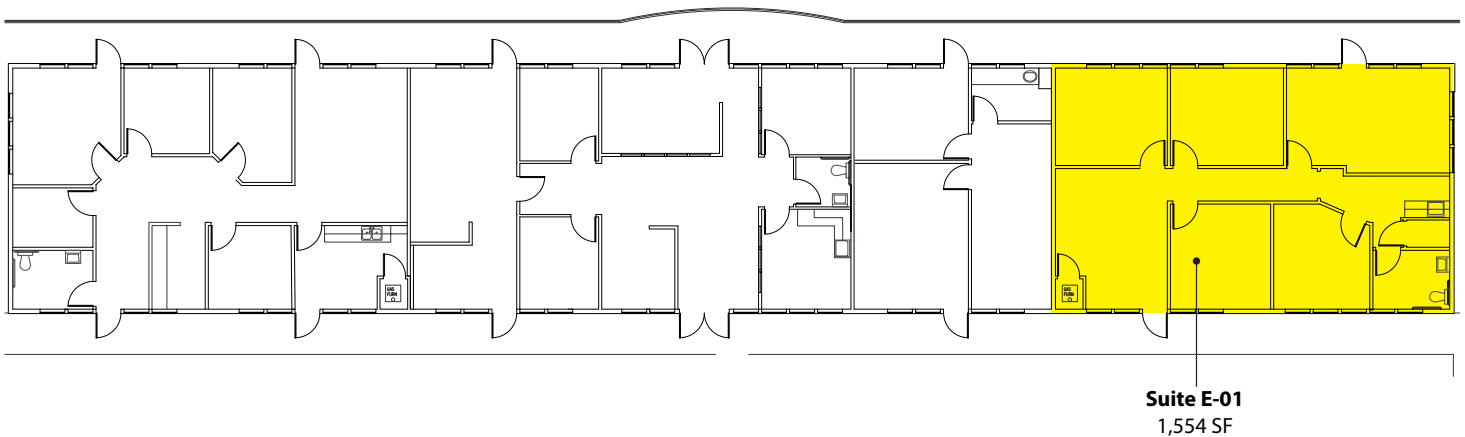
The information provided has been obtained from sources believed reliable. While we do not doubt its accuracy, we have not verified and make no guarantee, warranty or representation about it. It is your sole responsibility to independently confirm its accuracy and completeness.

GATEWAY POINTE BUSINESS PARK

2601-2715 Jahn Avenue NW, Gig Harbor, WA 98335

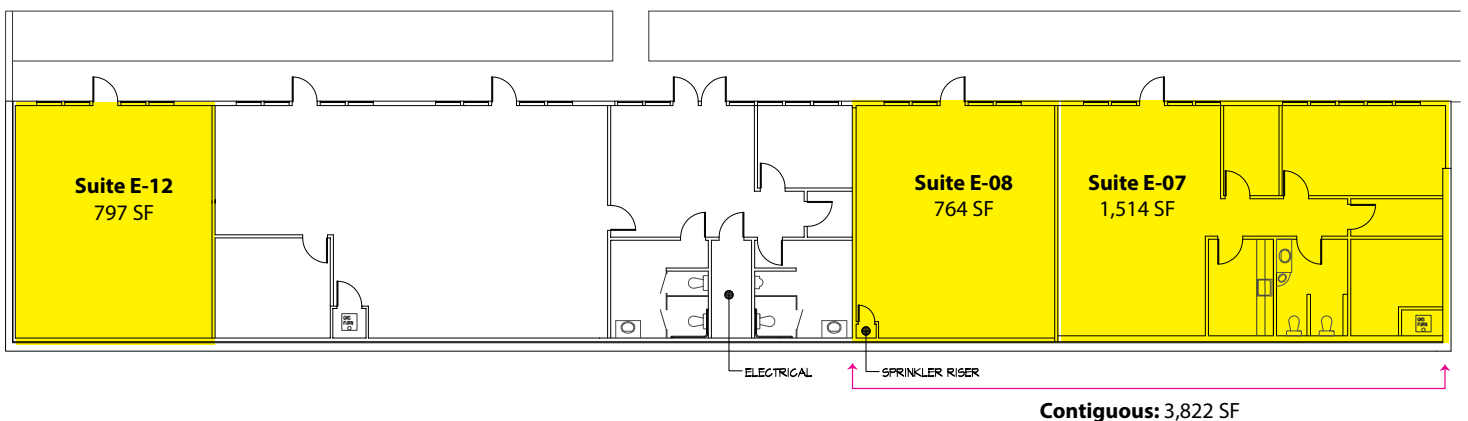
Building E - 2nd Floor

| Suite | Square Footage |
|-------|----------------|
| E-01 | 1,544 SF |



Building E - 1st Floor

| Suite | Square Footage |
|------------|---------------------|
| E-07 | 1,514 SF |
| E-08 | 764 SF |
| Contiguous | 2,278 SF - 3,822 SF |
| E-12 | 797 SF |



Keller Williams | 7525 28th Street W, University Place, WA
phone: (253) 460-8640 fax: (253) 460-8650 | www.kw.com

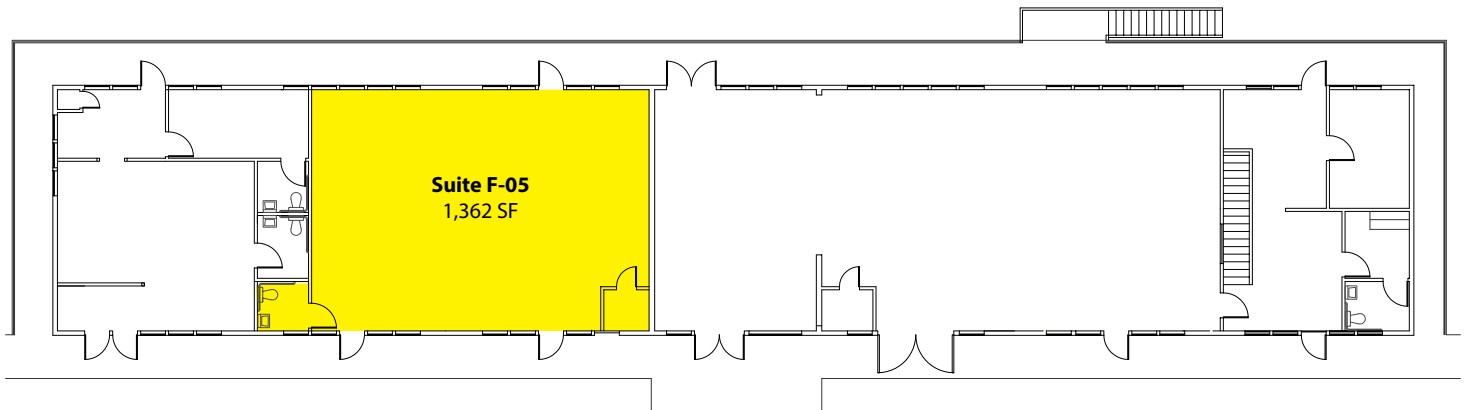
The information provided has been obtained from sources believed reliable. While we do not doubt its accuracy, we have not verified and make no guarantee, warranty or representation about it. It is your sole responsibility to independently confirm its accuracy and completeness.

GATEWAY POINTE BUSINESS PARK

2601-2715 Jahn Avenue NW, Gig Harbor, WA 98335

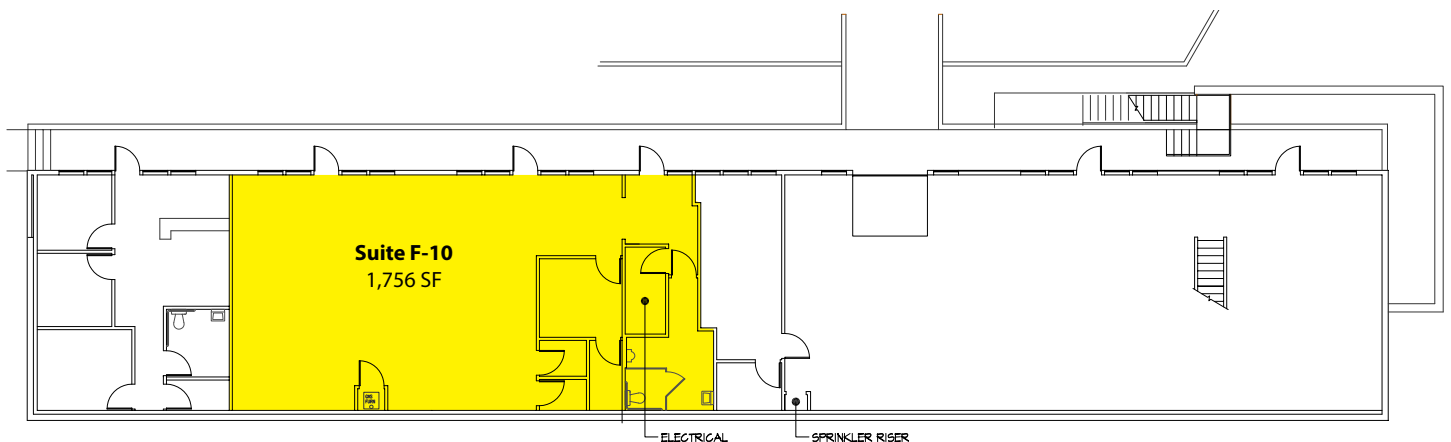
Building F - 2nd Floor

| Suite | Square Footage |
|-------|----------------|
| F-05 | 1,362 SF |



Building F - 1st Floor

| Suite | Square Footage |
|-------|----------------|
| F-10 | 1,756 SF |



Keller Williams | 7525 28th Street W, University Place, WA
phone: (253) 460-8640 fax: (253) 460-8650 | www.kw.com

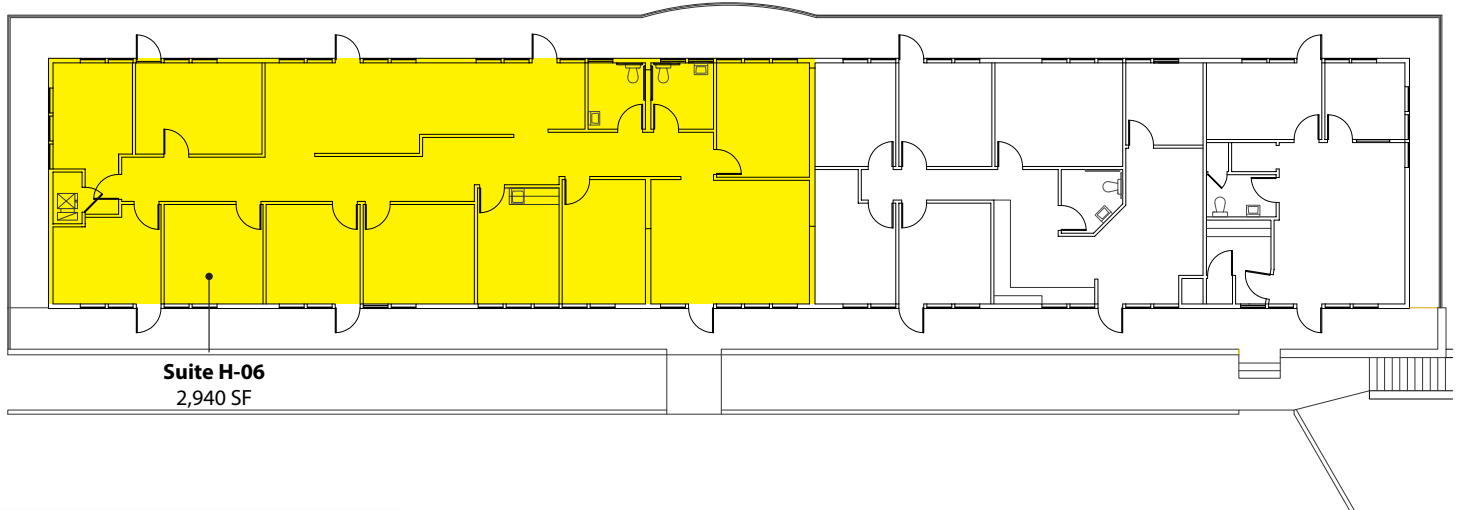
The information provided has been obtained from sources believed reliable. While we do not doubt its accuracy, we have not verified and make no guarantee, warranty or representation about it. It is your sole responsibility to independently confirm its accuracy and completeness.

GATEWAY POINTE BUSINESS PARK

2601-2715 Jahn Avenue NW, Gig Harbor, WA 98335

Building H - 2nd Floor

| Suite | Square Footage |
|-------|----------------|
| H-06 | 2,940 SF |



Site Plan

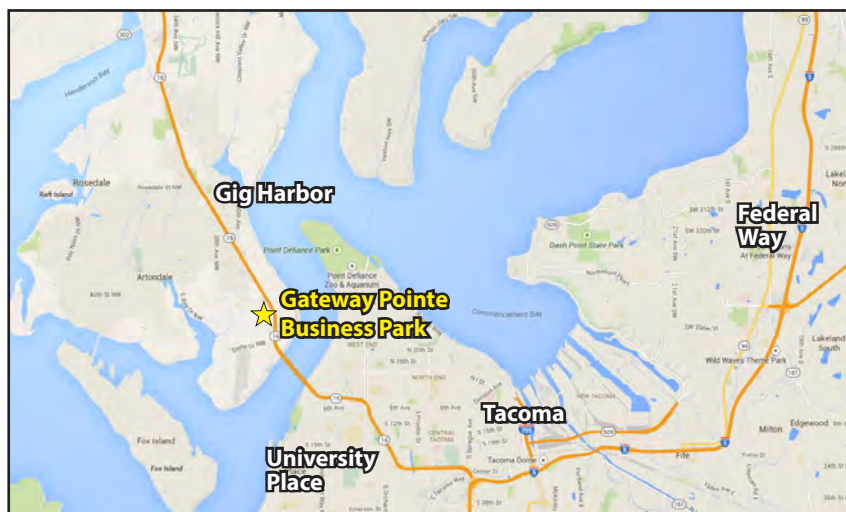


Keller Williams | 7525 28th Street W, University Place, WA
phone: (253) 460-8640 fax: (253) 460-8650 | www.kw.com

The information provided has been obtained from sources believed reliable. While we do not doubt its accuracy, we have not verified and make no guarantee, warranty or representation about it. It is your sole responsibility to independently confirm its accuracy and completeness.

GATEWAY POINTE BUSINESS PARK

2601-2715 Jahn Avenue NW, Gig Harbor, WA 98335



For more information, contact:

KELLER WILLIAMS

Mike Armanious, CCIM

(253) 988-6115

marmanious@kw.com

ROSEN~HARBOTTLE CRE

Caleb Farnworth, CCIM

(425) 289-2235

calebf@rosenharbottle.com

Keller Williams | 7525 28th Street W, University Place, WA
phone: (253) 460-8640 fax: (253) 460-8650 | www.kw.com

The information provided has been obtained from sources believed reliable. While we do not doubt its accuracy, we have not verified and make no guarantee, warranty or representation about it. It is your sole responsibility to independently confirm its accuracy and completeness.