

WILLOWS PARK I & II

15205 - 15265 NE 95th Street, Redmond, WA 98052



10,089 SF (2,084 SF Ofc) Available

\$1.35/SF Ofc | \$0.75/SF Whse, NNN

FEATURES:

- 1 Grade-Level Door & 2 Dock-High Doors
- Move-In Ready
- 16' Clear Height
- Building Signage Available
- Close-In Redmond Location
- Quality Concrete Tilt-Up Construction



For more information, contact:

ROSEN~HARBOTTLE
COMMERCIAL REAL ESTATE

Grant Rubenstein
(425) 289-2220
grant@rosenharbottle.com

www.rosenharbottle.com

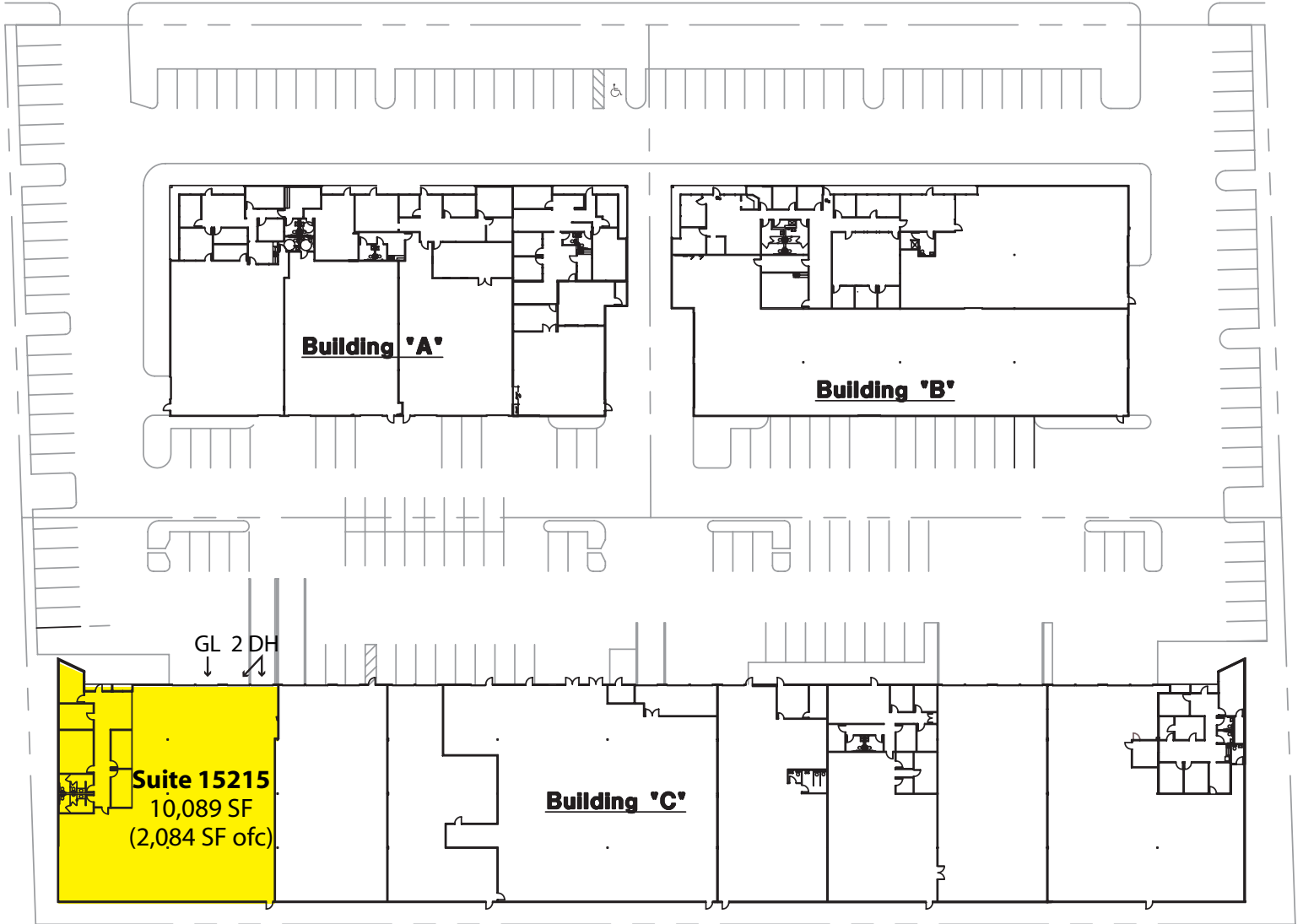
Rosen~Harbottle Commercial Real Estate | P.O. Box 5003 Bellevue, WA 98009-5003
phone: (425) 454-3030 fax: (425) 454-6705 | www.rosenharbottle.com

The information provided has been obtained from sources believed reliable. While we do not doubt its accuracy, we have not verified and make no guarantee, warranty or representation about it. It is your sole responsibility to independently confirm its accuracy and completeness.

WILLOWS PARK I & II

15205 - 15265 NE 95th Street, Redmond, WA 98052

NE 95th Street



For more information, contact:

ROSEN~HARBOTTLE COMMERCIAL REAL ESTATE

Grant Rubenstein

(425) 289-2220

grant@rosenharbottle.com

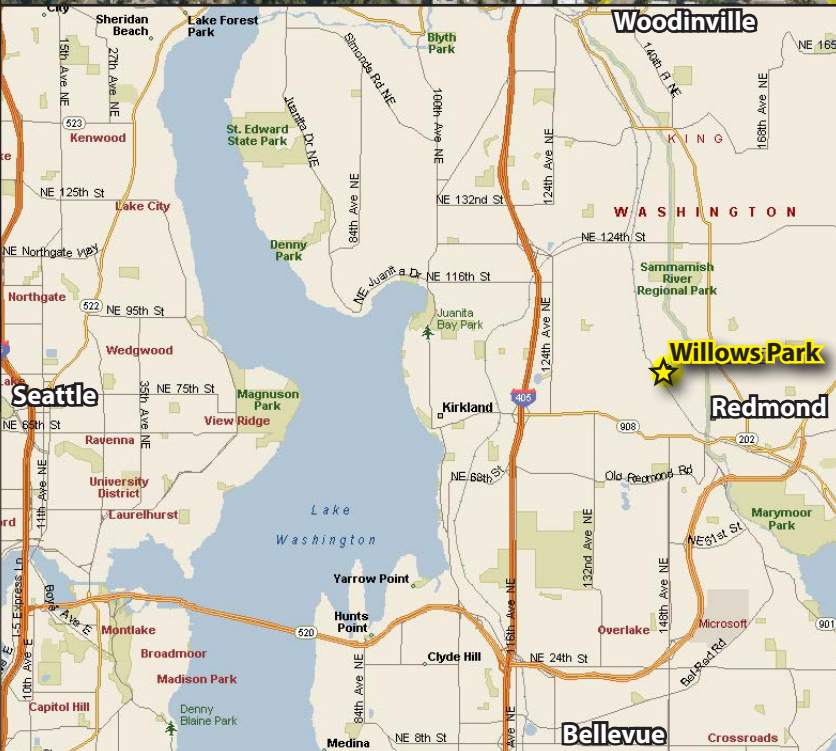
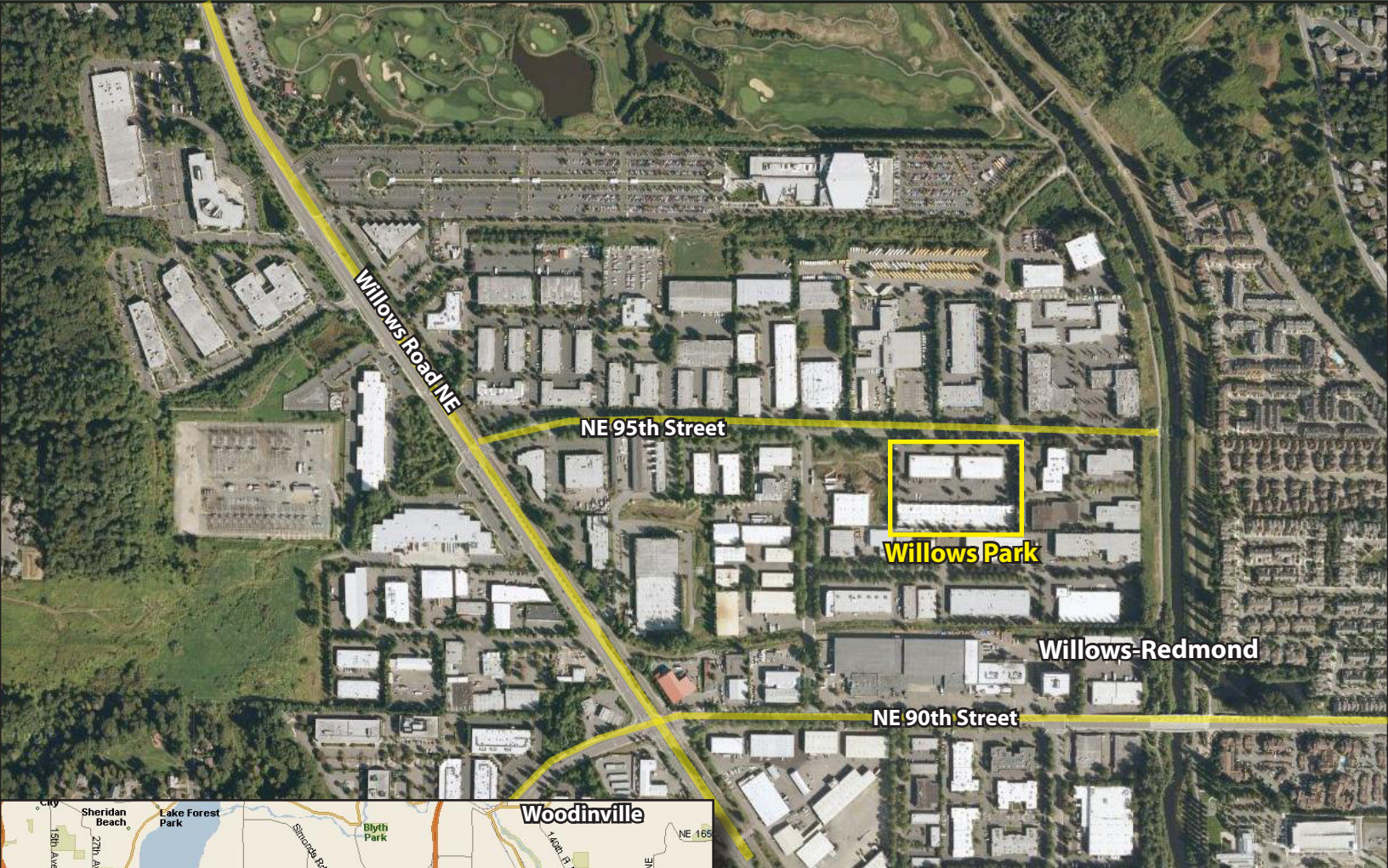
www.rosenharbottle.com

The information provided has been obtained from sources believed reliable. While we do not doubt its accuracy, we have not verified and make no guarantee, warranty or representation about it. It is your sole responsibility to independently confirm its accuracy and completeness.



WILLOWS PARK I & II

15205 - 15265 NE 95th Street, Redmond, WA 98052



Rosen | Harbottle
Commercial Real Estate

P.O. Box 5003, Bellevue, WA 98009-5003

(425) 454-3030 Phone (425) 454-6705 Fax

www.rosenharbottle.com

The information provided has been obtained from sources believed reliable. While we do not doubt its accuracy, we have not verified and make no guarantee, warranty or representation about it. It is your sole responsibility to independently confirm its accuracy and completeness.