

QUAD 95

14787 NE 95th Street, Redmond, WA 98052



PRIME REDMOND LOCATION
6,916 SF (3,131 SF ofc) For Lease
\$1.35/SF Office | \$0.70/SF Whse

FEATURES:

- Retail Visibility to Willows Road
- Climate Controlled Warehouse
- 16' Clear Height
- Grade-Level Loading
- Zoning: MP (Manufacturing Park)

For more information, contact:

ROSEN~HARBOTTLE
COMMERCIAL REAL ESTATE

Grant Rubenstein
(425) 289-2220
grant@rosenharbottle.com

www.rosenharbottle.com

Rosen~Harbottle Commercial Real Estate | P.O. Box 5003 Bellevue, WA 98009-5003
phone: (425) 454-3030 fax: (425) 454-6705 | www.rosenharbottle.com

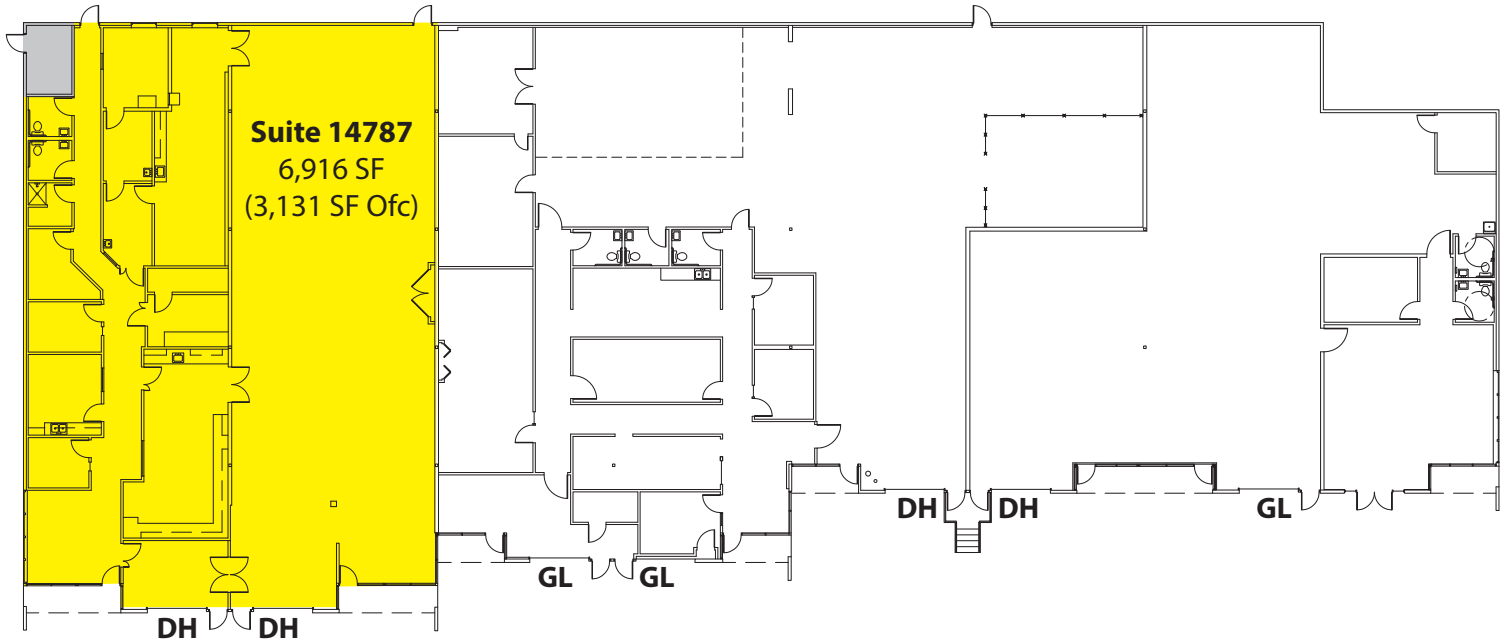
The information provided has been obtained from sources believed reliable. While we do not doubt its accuracy, we have not verified and make no guarantee, warranty or representation about it. It is your sole responsibility to independently confirm its accuracy and completeness.



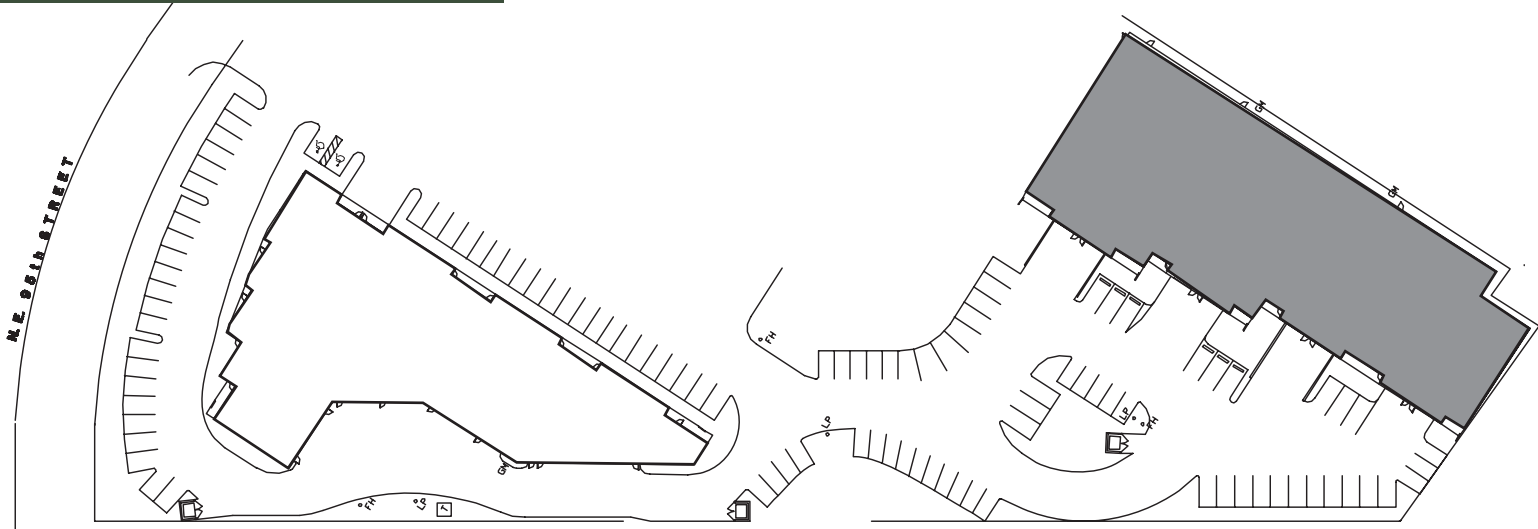
QUAD 95

14787 NE 95th Street, Redmond, WA 98052

BUILDING B - FLOOR PLAN



SITE PLAN



BURLINGTON NORTHERN RAILROAD



WILLOWS ROAD

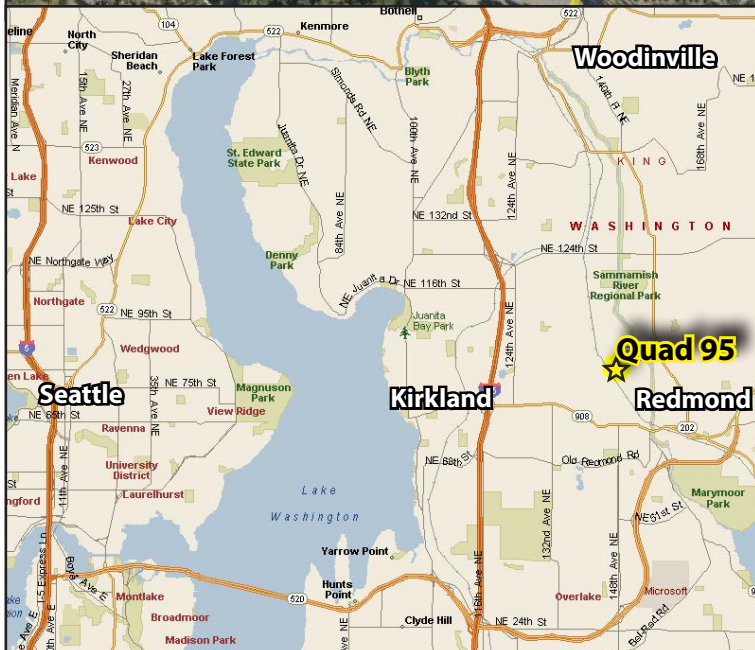
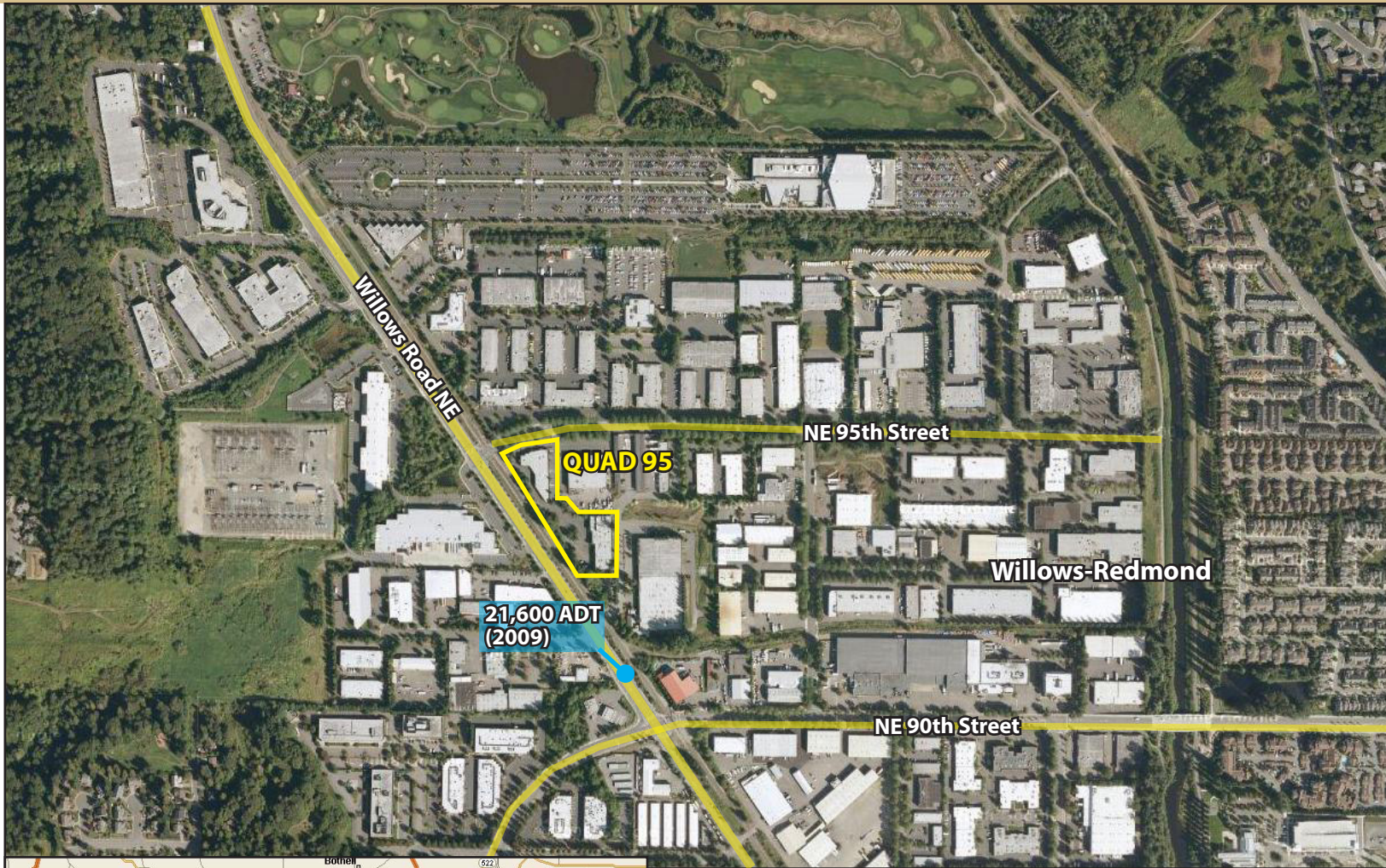
Rosen~Harbottle Commercial Real Estate | P.O. Box 5003 Bellevue, WA 98009-5003
phone: (425) 454-3030 fax: (425) 454-6705 | www.rosenharbottle.com

The information provided has been obtained from sources believed reliable. While we do not doubt its accuracy, we have not verified and make no guarantee, warranty or representation about it. It is your sole responsibility to independently confirm its accuracy and completeness.



QUAD 95

14787 NE 95th Street, Redmond, WA 98052



For more information, contact:

ROSEN~HARBOTTLE
COMMERCIAL REAL ESTATE

Grant Rubenstein

(425) 289-2220

grant@rosenharbottle.com

www.rosenharbottle.com

Rosen~Harbottle Commercial Real Estate | P.O. Box 5003 Bellevue, WA 98009-5003
phone: (425) 454-3030 fax: (425) 454-6705 | www.rosenharbottle.com

The information provided has been obtained from sources believed reliable. While we do not doubt its accuracy, we have not verified and make no guarantee, warranty or representation about it. It is your sole responsibility to independently confirm its accuracy and completeness.