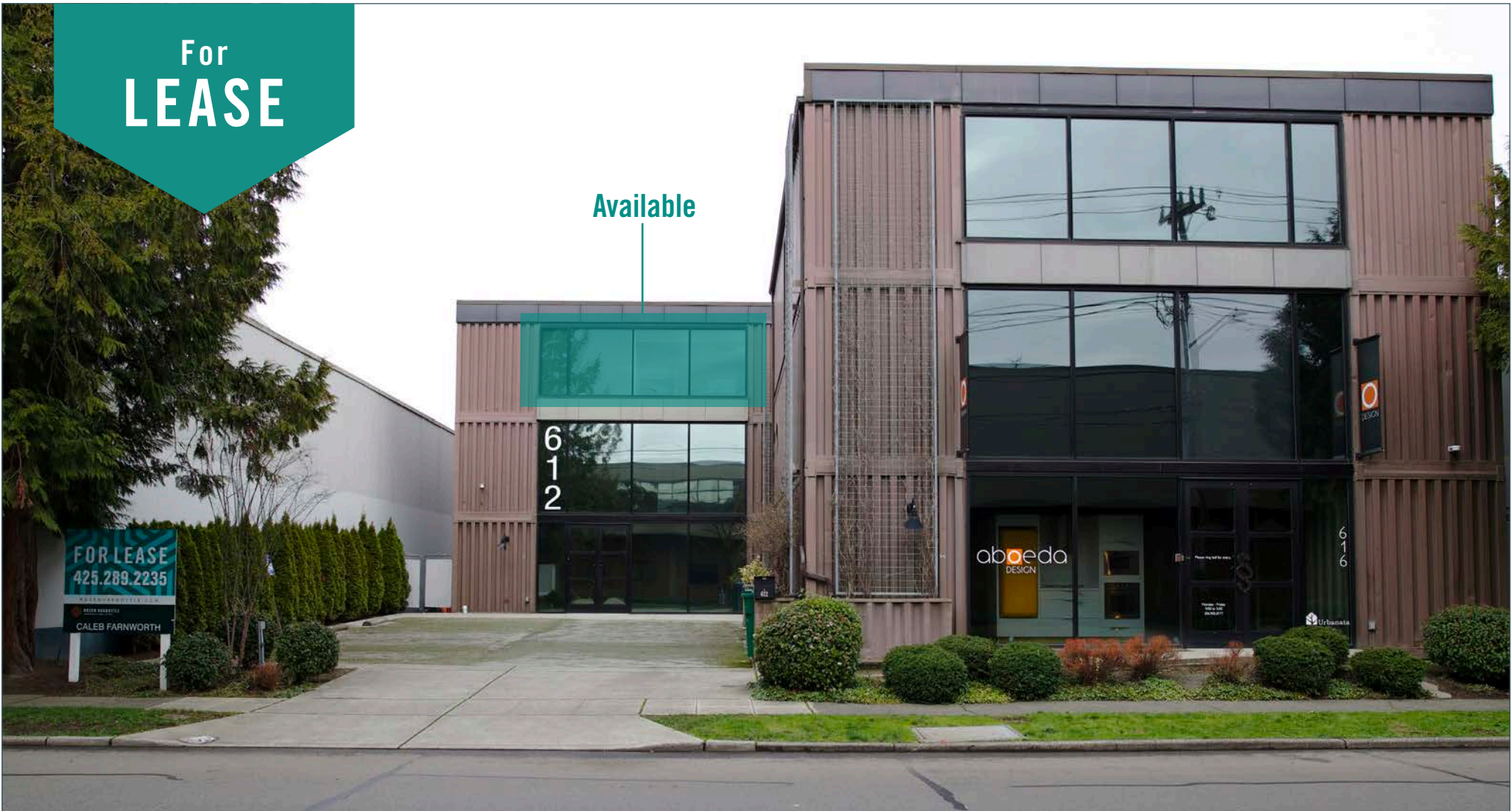


For
LEASE

Available



612 Building

612 S Lucile Street | Seattle, WA

Caleb Farnworth, CCIM

425.289.2235

calebf@rosenharbottle.com

425.454.3030
rosenharbottle.com

PO Box 5003
Bellevue, WA 98009 - 5003



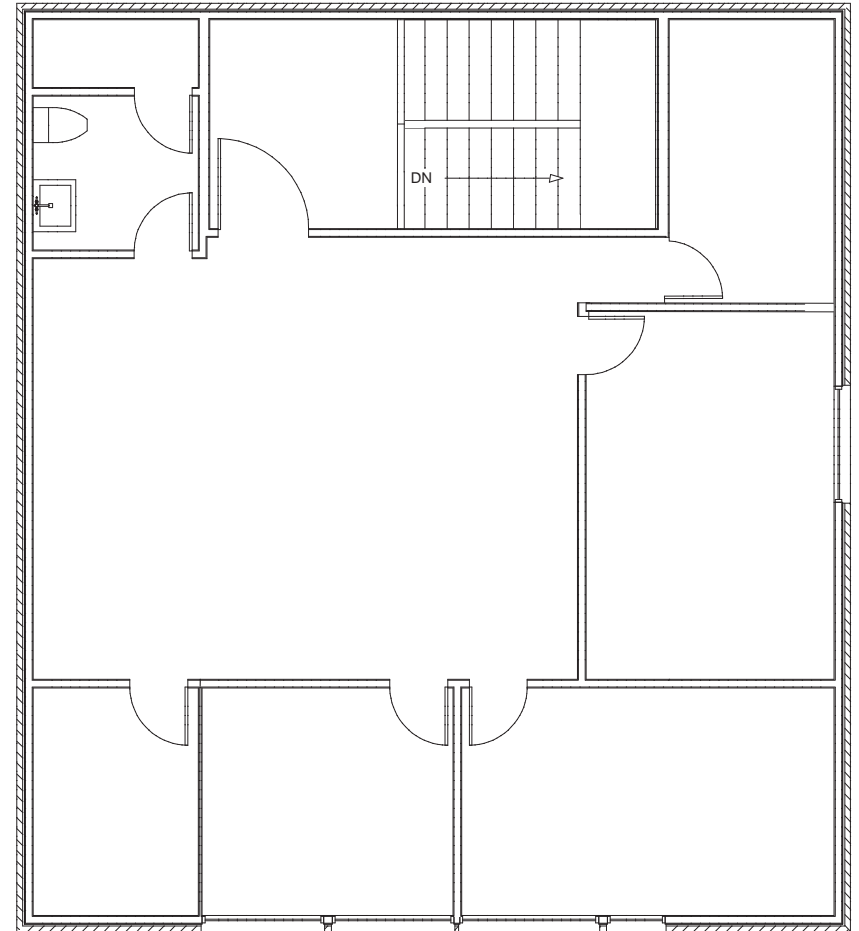
CREATIVE OFFICE SPACE IN GEORGETOWN

1,440 SF Available

\$24.00/SF + Utilities

DETAILS:

- Third Floor Office
- 4 Private Offices, 1 Conference Room, and 1 Restroom
- Abundant Parking and HVAC
- Located in South Seattle Design Center District
- Close Proximity to Georgetown Restaurants, Breweries, and Retail/Art Shops
- Immediate Access to Airport Way, Highway-99, and I-5



LOCATION MAP



NEARBY AMENITIES:

- Fran's Chocolate
- Fonda La Catrina
- Georgetown Ballroom
- Machine House Brewery
- Georgetown Playfield
- Star Brass Lounge
- Wax Sabbath Spa
- Zippy's Giant Burger
- BOPBOX
- Elysian Brewery
- Forte Coffee Roaster
- Lect's Soup Stop
- Pho Sriracha
- Brother Joe
- Sandbox Sports
- Georgetown Brewing
- Krab Jab Studio
- Flying Squirrel Pizza