

NORTHCREEK BUSINESS PARK

17901 Bothell-Everett Highway, Bothell, WA 98012



HIGH-VISIBILITY ENDCAP SPACE

1,568 SF - 4,069 SF Available

\$21.00/SF, NNN

FEATURES:

- Bothell-Everett Highway Frontage
- Monument & Pylon Signage Available
- Grade-Level Loading
- High-Image, Ample Glass
- Quality Concrete-Tilt, High-Tech Building

ROSEN | HARBOTTLE
RH

For more information, contact:

**ROSEN~HARBOTTLE
COMMERCIAL REAL ESTATE**

Brian Stewart
(425) 289-2222
brians@rosenharbottle.com

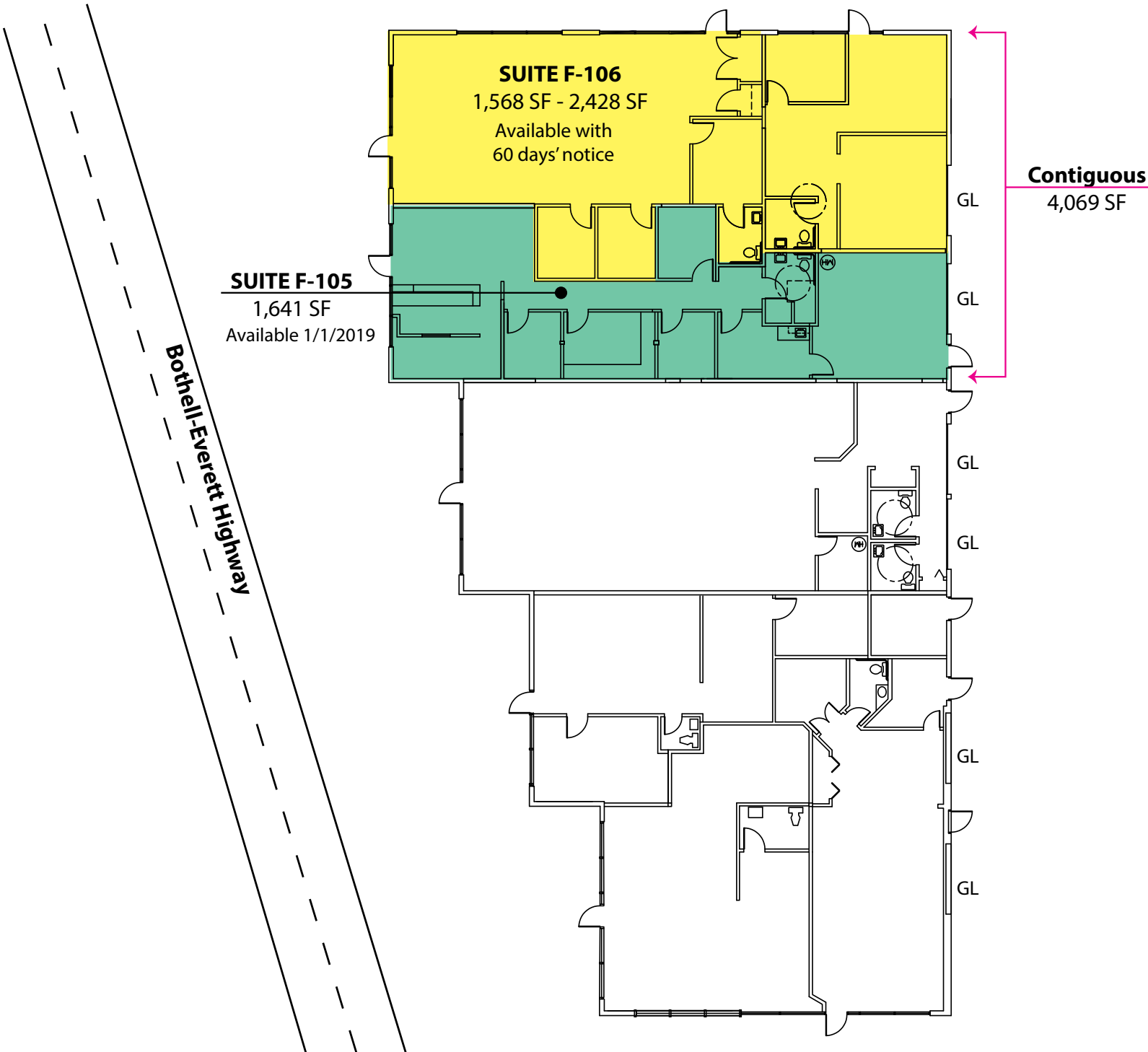
www.rosenharbottle.com

Rosen~Harbottle Commercial Real Estate | P.O. Box 5003 Bellevue, WA 98009-5003
phone: (425) 454-3030 fax: (425) 454-6705 | www.rosenharbottle.com

The information provided has been obtained from sources believed reliable. While we do not doubt its accuracy, we have not verified and make no guarantee, warranty or representation about it. It is your sole responsibility to independently confirm its accuracy and completeness.

NORTHCREEK BUSINESS PARK

17901 Bothell-Everett Highway, Bothell, WA 98012



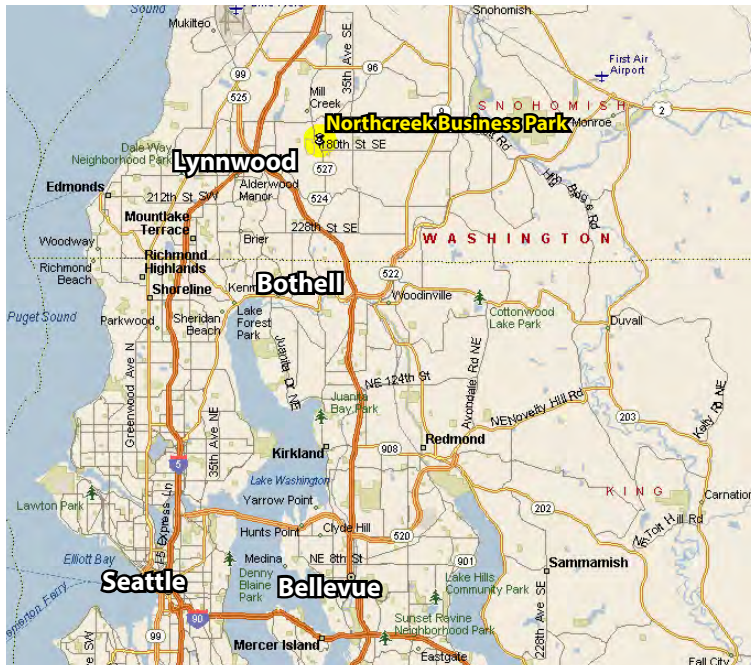
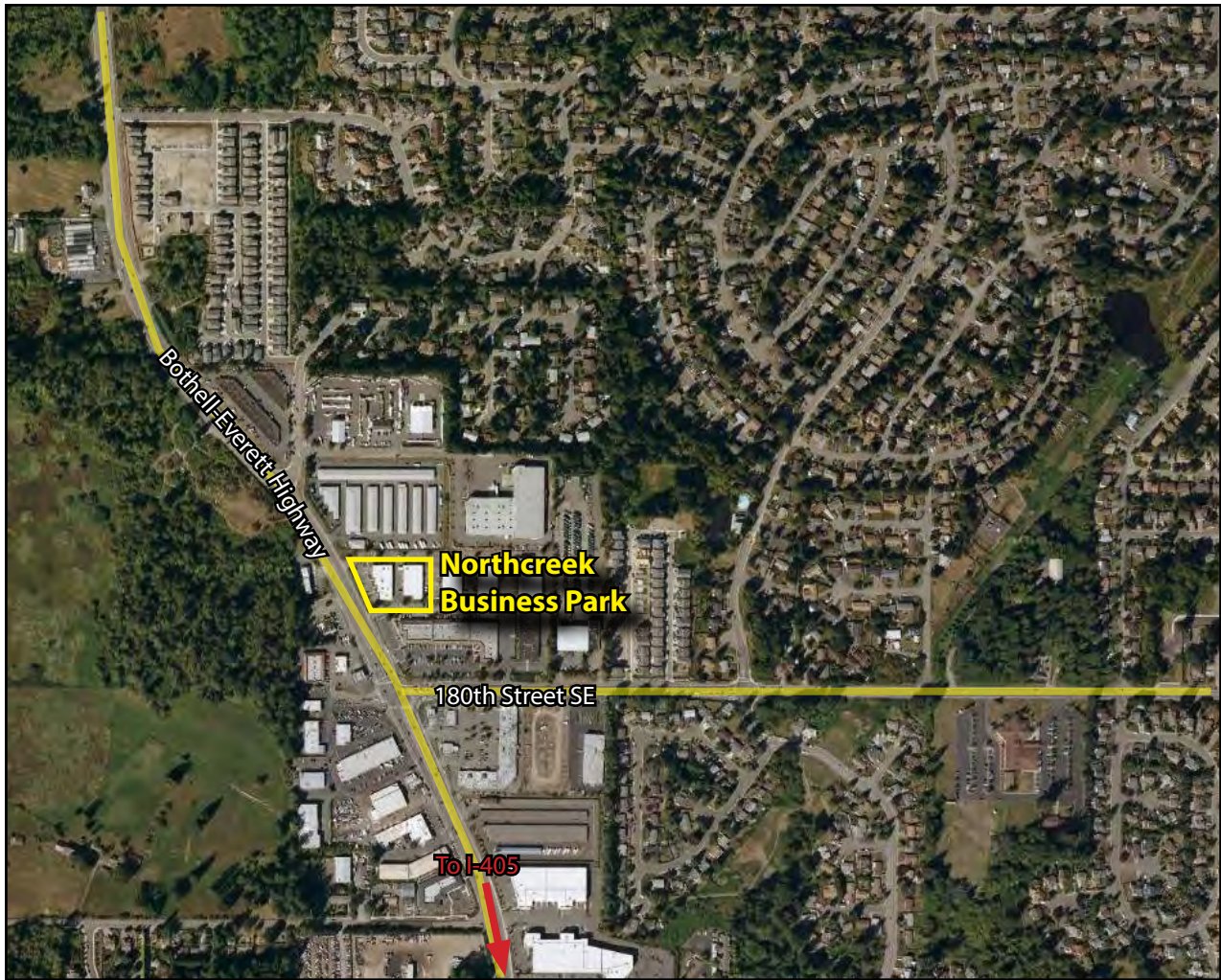
Rosen~Harbottle Commercial Real Estate | P.O. Box 5003 Bellevue, WA 98009-5003
phone: (425) 454-3030 fax: (425) 454-6705 | www.rosenharbottle.com

The information provided has been obtained from sources believed reliable. While we do not doubt its accuracy, we have not verified and make no guarantee, warranty or representation about it. It is your sole responsibility to independently confirm its accuracy and completeness.



NORTHCREEK BUSINESS PARK

17901 Bothell-Everett Highway, Bothell, WA 98012



For more information, contact:

**ROSEN~HARBOTTLE
COMMERCIAL REAL ESTATE**

Brian Stewart

(425) 289-2222

brians@rosenharbottle.com

www.rosenharbottle.com

Rosen~Harbottle Commercial Real Estate | P.O. Box 5003 Bellevue, WA 98009-5003
phone: (425) 454-3030 fax: (425) 454-6705 | www.rosenharbottle.com

The information provided has been obtained from sources believed reliable. While we do not doubt its accuracy, we have not verified and make no guarantee, warranty or representation about it. It is your sole responsibility to independently confirm its accuracy and completeness.