

HALL CREEK OFFICE PARK

6912 220th Street SW, Mountlake Terrace, WA 98043



NORTHEAST OFFICE SPACE

1,250 SF - 1,754 SF Available

\$25.00/SF, Full Service

FEATURES:

- Quick Access to I-5, Hwy 99 & Northgate
- Minutes from Swedish-Edmonds Hospital
- Concrete, Steel and Glass Construction
- Monument Signage Available
- \$1 Million Building Renovation
- Corner Suites with Extensive Window Line

For more information, contact:

ROSEN~HARBOTTLE
COMMERCIAL REAL ESTATE

Jack Rosen
(425) 289-2221
jack@rosenharbottle.com

Brian Stewart
(425) 289-2222
brians@rosenharbottle.com

www.rosenharbottle.com

Rosen-Harbottle Commercial Real Estate | P.O. Box 5003 Bellevue, WA 98009-5003
phone: (425) 454-3030 fax: (425) 454-6705 | www.rosenharbottle.com

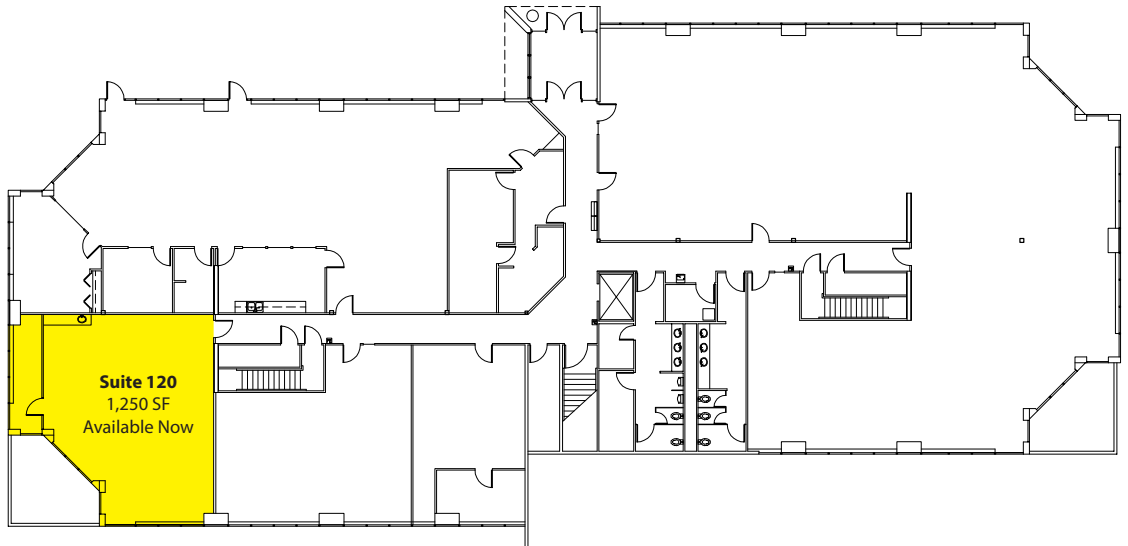
The information provided has been obtained from sources believed reliable. While we do not doubt its accuracy, we have not verified and make no guarantee, warranty or representation about it. It is your sole responsibility to independently confirm its accuracy and completeness.

HALL CREEK OFFICE PARK

6912 220th Street SW, Mountlake Terrace, WA 98043

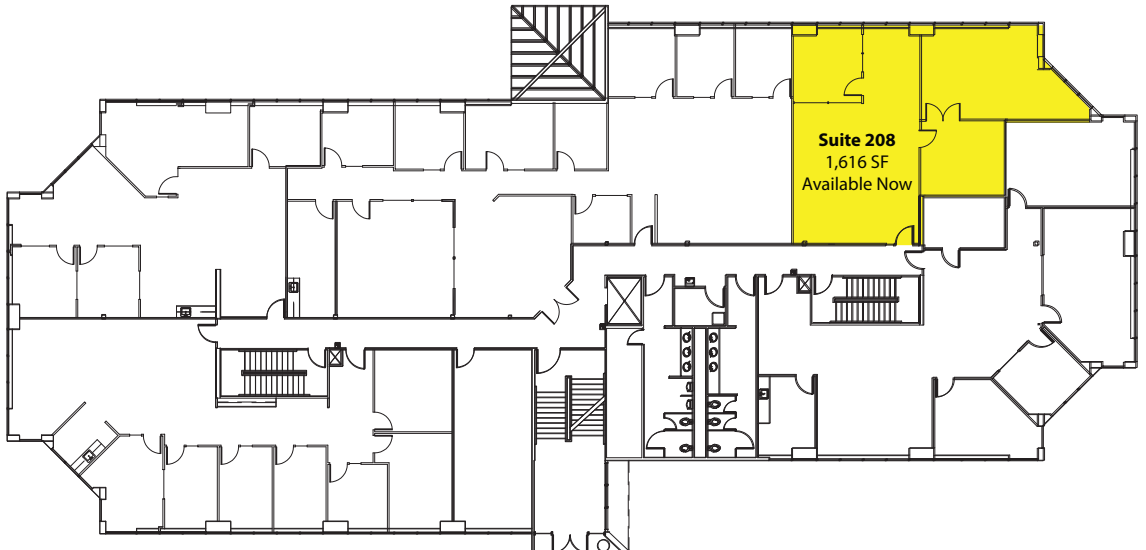
First Floor

Suite 120: 1,250 SF



Second Floor

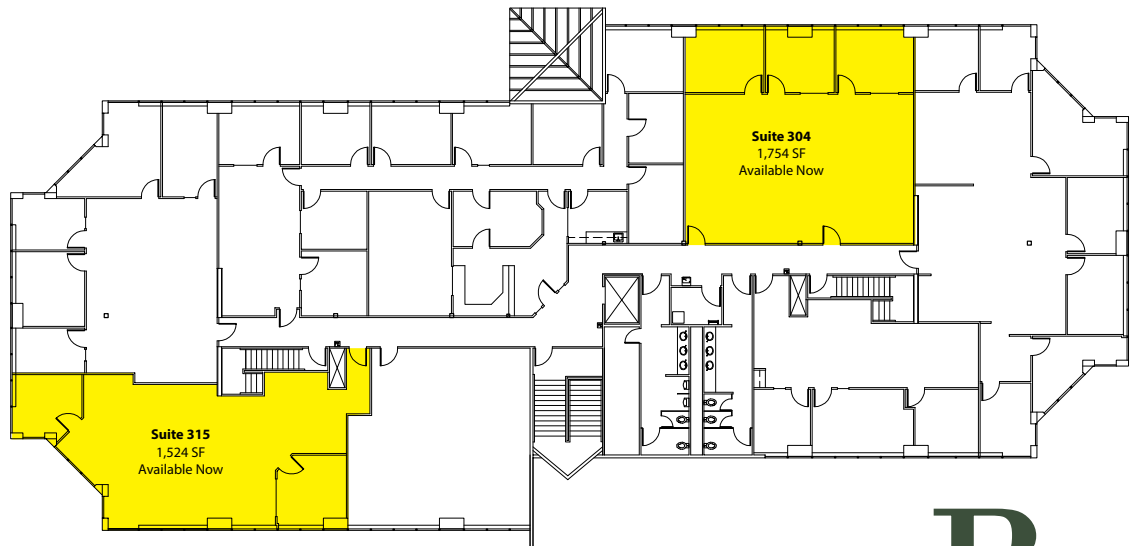
Suite 208: 1,616 SF



Third Floor

Suite 304: 1,754 SF

Suite 315: 1,524 SF



Rosen-Harbottle Commercial Real Estate | P.O. Box 5003 Bellevue, WA 98009-5003
phone: (425) 454-3030 fax: (425) 454-6705 | www.rosenharbottle.com

The information provided has been obtained from sources believed reliable. While we do not doubt its accuracy, we have not verified and make no guarantee, warranty or representation about it. It is your sole responsibility to independently confirm its accuracy and completeness.



HALL CREEK OFFICE PARK

6912 220th Street SW, Mountlake Terrace, WA 98043



For more information, contact:

ROSEN~HARBOTTLE COMMERCIAL REAL ESTATE

Jack Rosen

(425) 289-2221

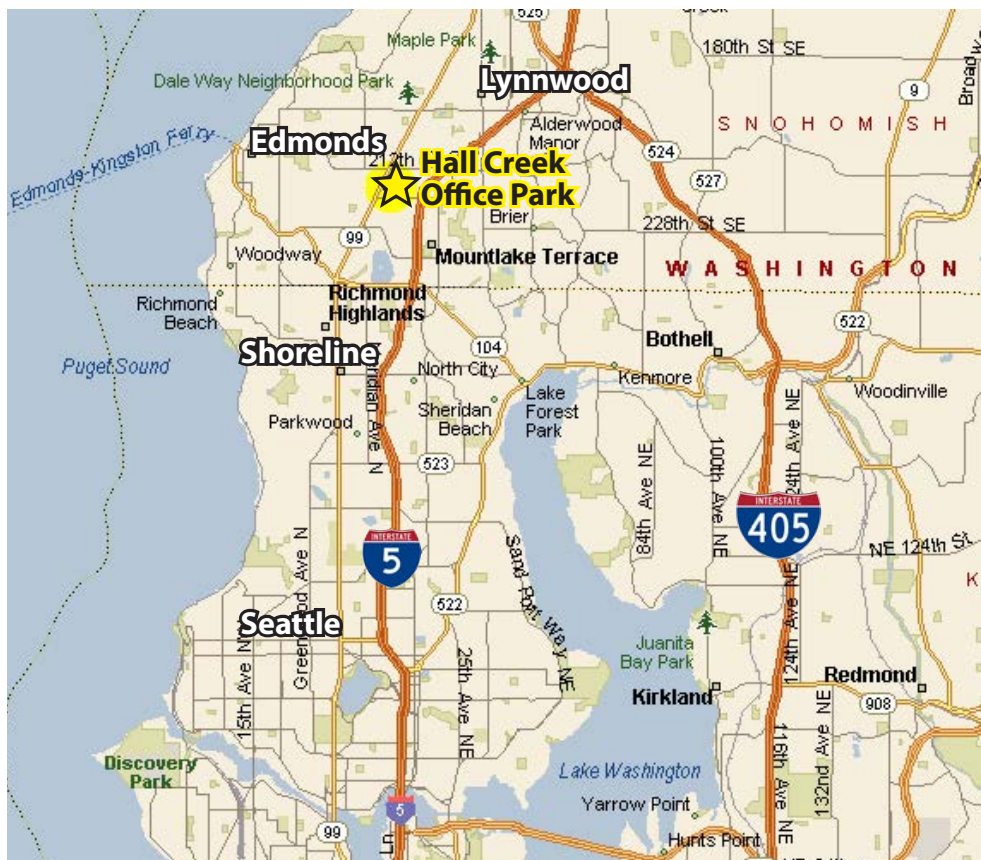
jack@rosenharbottle.com

Brian Stewart

(425) 289-2222

brians@rosenharbottle.com

www.rosenharbottle.com



Rosen-Harbottle Commercial Real Estate | P.O. Box 5003 Bellevue, WA 98009-5003

phone: (425) 454-3030 fax: (425) 454-6705 | www.rosenharbottle.com

The information provided has been obtained from sources believed reliable. While we do not doubt its accuracy, we have not verified and make no guarantee, warranty or representation about it. It is your sole responsibility to independently confirm its accuracy and completeness.