

# RODDA PAINT BUILDING

7825 Evergreen Way, Everett, WA 98208

**FOR  
LEASE**



For more information, contact:

ROSEN~HARBOTTLE  
COMMERCIAL REAL ESTATE

Grant Rubenstein  
(425) 289-2220  
grant@rosenharbottle.com

Mimi Rosen  
(425) 289-2217  
mimi@rosenharbottle.com

## High Visibility Retail on Evergreen Way

### 5,697 SF AVAILABLE

### \$16.00 / SF, NNN

#### FEATURES:

- **5,697 SF Available 4/1/2017**
  - Currently Occupied by Quality Rentals
- New High-Efficiency Lighting
- Best Signage on Evergreen Way
- Adjacent to Cascade Center
  - Safeway, Big Lots & Ross Anchored
- 5.0 / 1,000 SF Parking Ratio

Rosen~Harbottle Commercial Real Estate | P.O. Box 5003 Bellevue, WA 98009-5003  
phone: (425) 454-3030 fax: (425) 454-6705 | [www.rosenharbottle.com](http://www.rosenharbottle.com)

The information provided has been obtained from sources believed reliable. While we do not doubt its accuracy, we have not verified and make no guarantee, warranty or representation about it. It is your sole responsibility to independently confirm its accuracy and completeness.

# RODDA PAINT BUILDING

7825 Evergreen Way, Everett, WA 98208



**Evergreen Way**

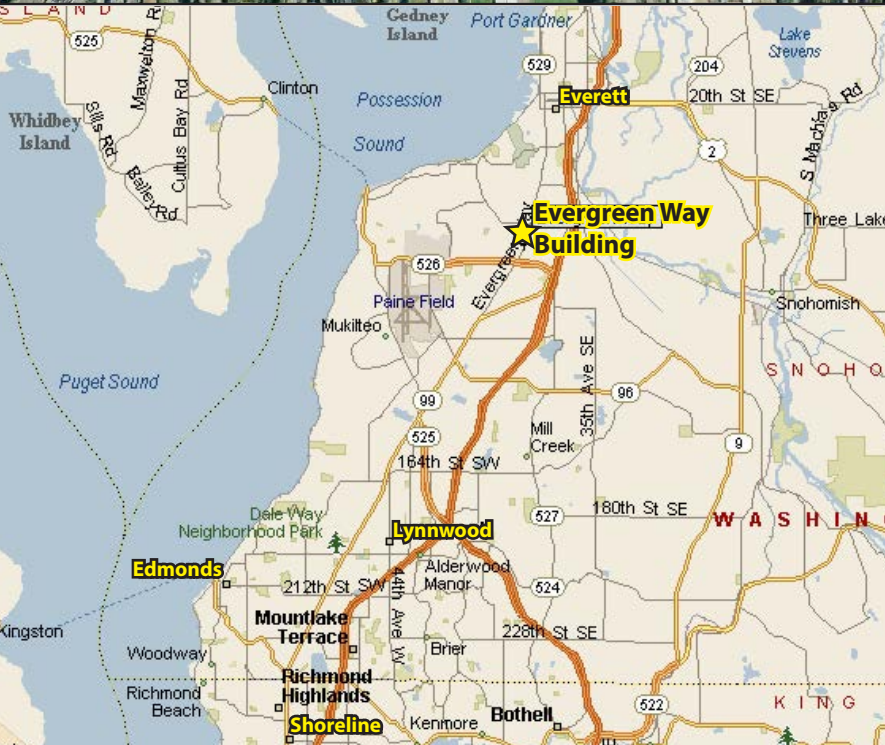
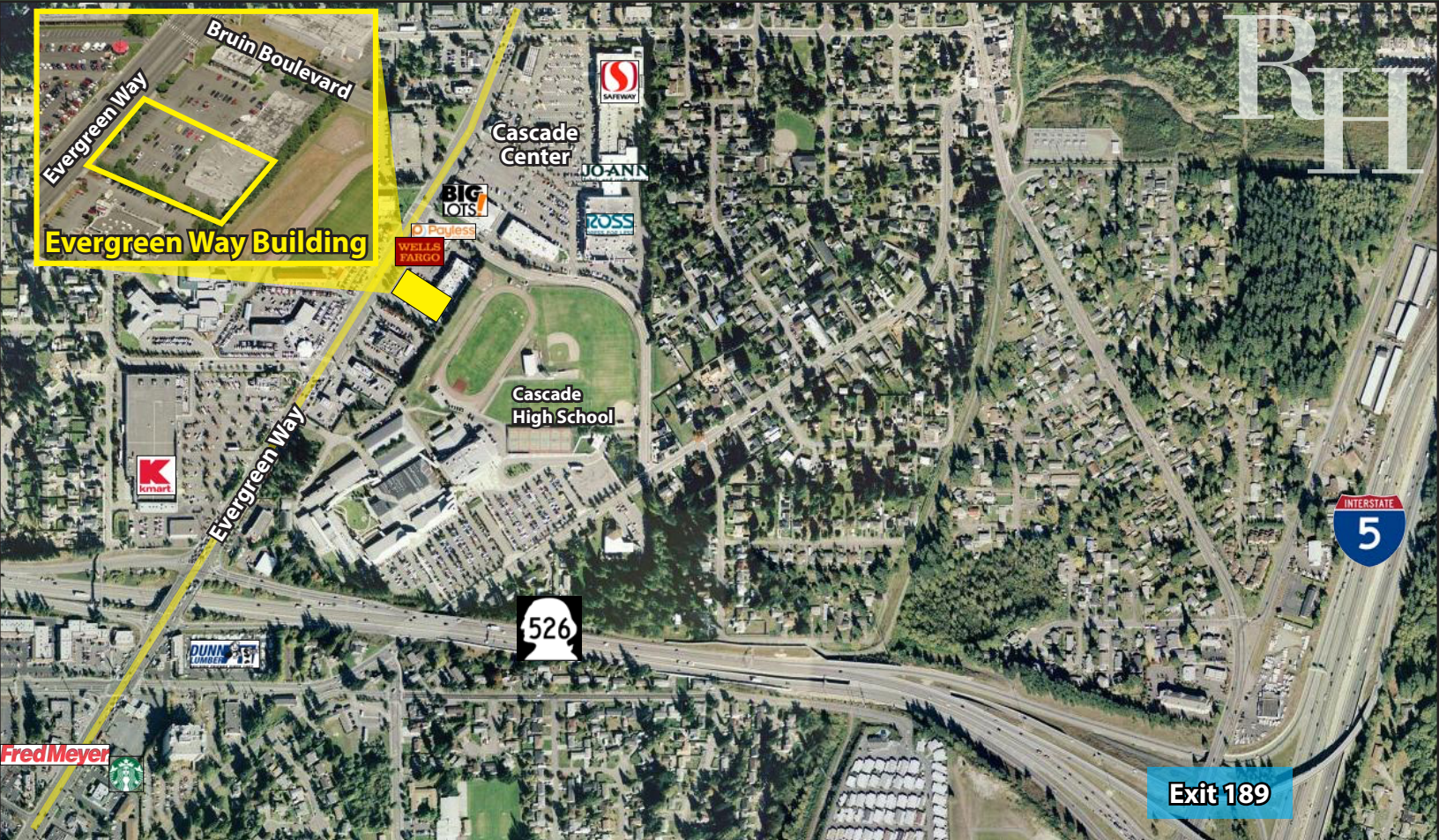
Rosen~Harbottle Commercial Real Estate | P.O. Box 5003 Bellevue, WA 98009-5003  
phone: (425) 454-3030 fax: (425) 454-6705 | [www.rosenharbottle.com](http://www.rosenharbottle.com)

The information provided has been obtained from sources believed reliable. While we do not doubt its accuracy, we have not verified and make no guarantee, warranty or representation about it. It is your sole responsibility to independently confirm its accuracy and completeness.



# RODDA PAINT BUILDING

7825 Evergreen Way, Everett, WA 98208



For more information, contact:

**ROSEN~HARBOTTLE  
COMMERCIAL REAL ESTATE**

**Grant Rubenstein**

(425) 289-2220

grant@rosenharbottle.com

**Mimi Rosen**

(425) 289-2217

mimi@rosenharbottle.com

www.rosenharbottle.com

Rosen~Harbottle Commercial Real Estate | P.O. Box 5003 Bellevue, WA 98009-5003  
phone: (425) 454-3030 fax: (425) 454-6705 | www.rosenharbottle.com

The information provided has been obtained from sources believed reliable. While we do not doubt its accuracy, we have not verified and make no guarantee, warranty or representation about it. It is your sole responsibility to independently confirm its accuracy and completeness.

