

KENT BUSINESS CAMPUS

841 N Central Avenue, Kent, WA 98032

ONE YEAR FREE RENT!*

Office or Retail Space

748 SF - 20,308 SF

\$14.00 - \$16.00/SF, NNN

FEATURES:

- Former Vision Quest Space Available
- New Lobby Renovation & Exterior Paint
- Frontage on N Central Avenue
- Prominent Signage
- Quick Access to SR 167, SR 516 & Downtown Kent
- Concrete, Steel & Glass Construction

* Free Rent for Five Years Paid Rent & 5,000 SF Minimum

For more information, contact:

ROSEN~HARBOTTLE COMMERCIAL REAL ESTATE

Grant Rubenstein

(425) 289-2220

grant@rosenhARBottle.com

Brian Stewart

(425) 289-2222

brians@rosenhARBottle.com

www.rosenhARBottle.com

Rosen~Harbottle Commercial Real Estate | P.O. Box 5003 Bellevue, WA 98009-5003

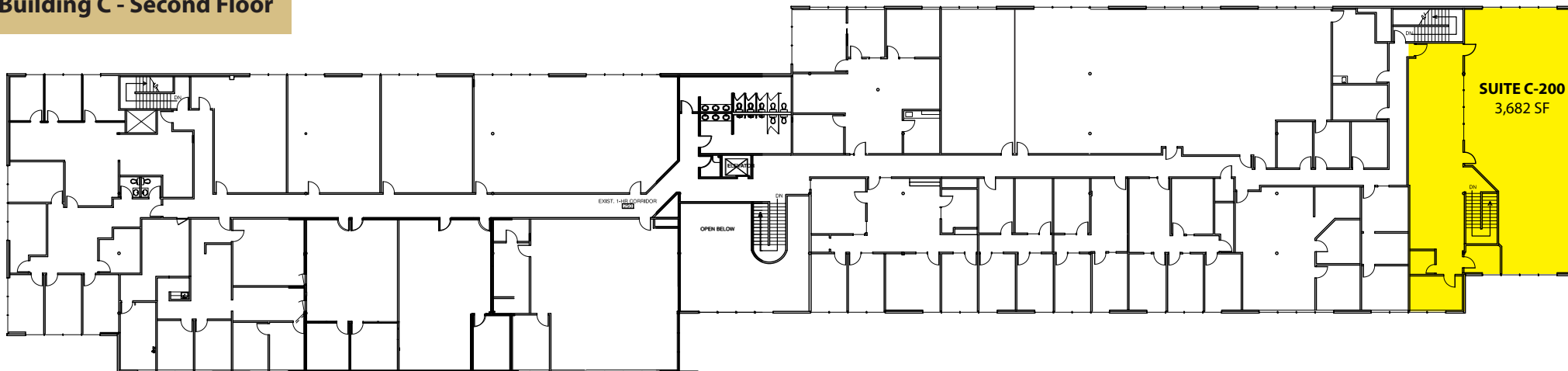
phone: (425) 454-3030 fax: (425) 454-6705 | www.rosenhARBottle.com

The information provided has been obtained from sources believed reliable. While we do not doubt its accuracy, we have not verified and make no guarantee, warranty or representation about it. It is your sole responsibility to independently confirm its accuracy and completeness.

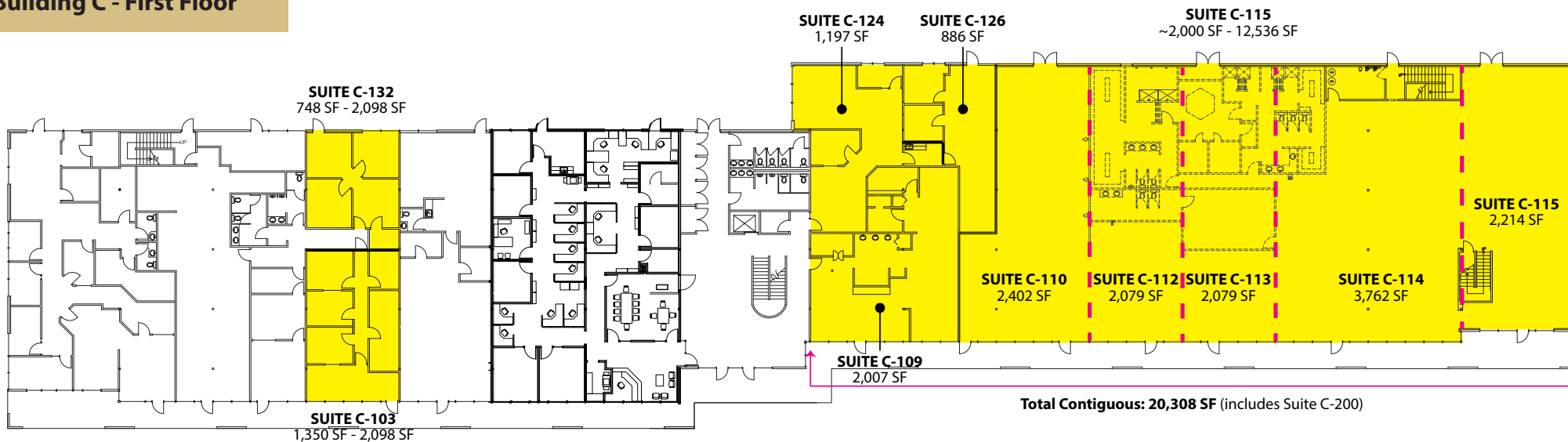
KENT BUSINESS CAMPUS

841 N Central Avenue, Kent, WA 98032

Building C - Second Floor



Building C - First Floor

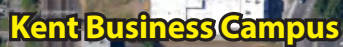


Rosen~Harbottle Commercial Real Estate | P.O. Box 5003 Bellevue, WA 98009-5003

phone: (425) 454-3030 fax: (425) 454-6705 | www.rosenharbottle.com

The information provided has been obtained from sources believed reliable. While we do not doubt its accuracy, we have not verified and make no guarantee, warranty or representation about it. It is your sole responsibility to independently confirm its accuracy and completeness.

841 N Central Avenue, Kent, WA 98032



Brian Stewart
(425) 289-2222
brians@rosenharbottle.com
www.rosenharbottle.com

The information provided has been obtained from sources believed reliable. While we do not doubt its accuracy, we have not verified and make no guarantee, warranty or representation about it. It is your sole responsibility to independently confirm its accuracy and completeness.