

OFFICE/RETAIL
LEASE



BONNEY LAKE VILLAGE SHOPPING CENTER

21135 - 21137 State Route 410 E | Bonney Lake, WA

Jack Rosen
425.289.2221
jack@rosenharbottle.com

Stossi Tsantilas
425.279.7943
stossit@rosenharbottle.com

425.454.3030
rosenharbottle.com

PO Box 5003
Bellevue, WA 98009 - 5003





ENDCAP OFFICE/RETAIL SPACE AVAILABLE

3,495 SF Available

\$27.00/SF, NNN

BUILDING & LOCATION FEATURES:

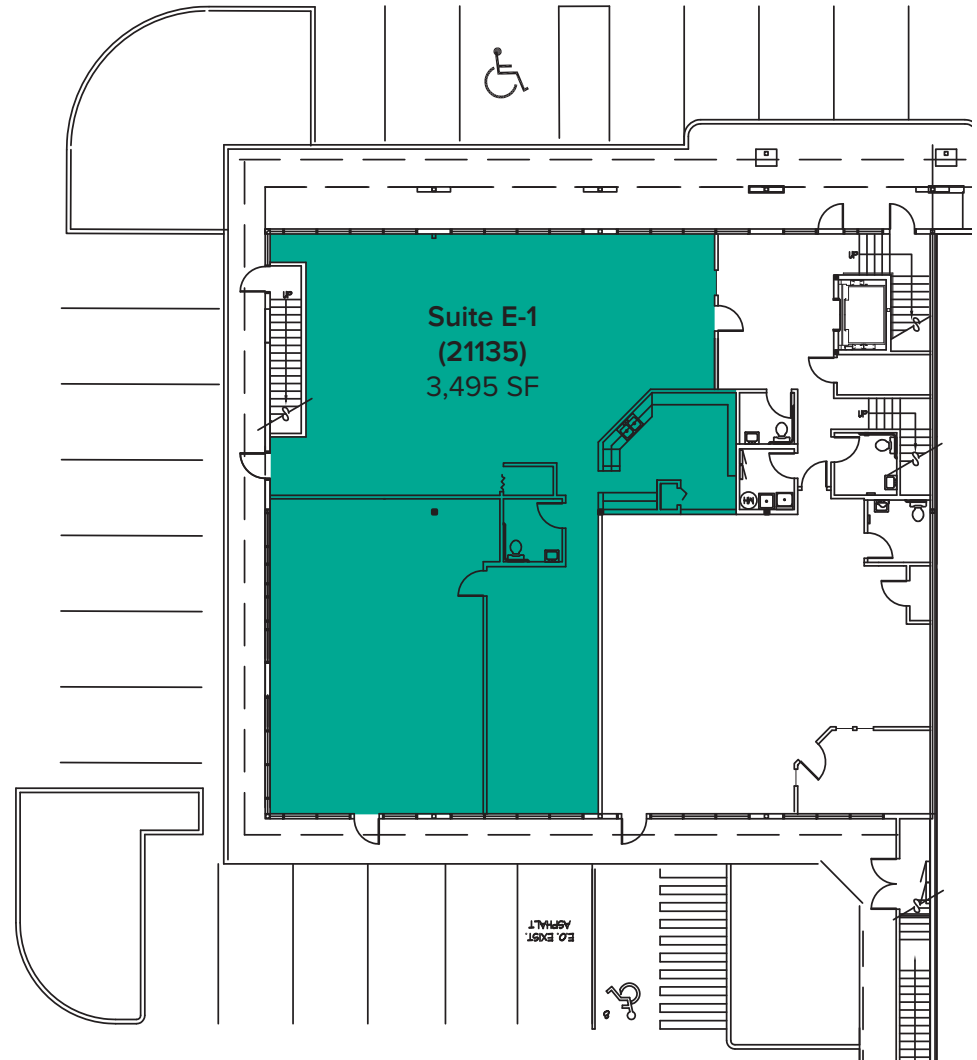
- Abundant Parking
- Elevator Access
- Natural Lighting
- Upgraded Lobby & Finishes
- Close Proximity to Growing Tehaleh Residential Development

The information provided herein has been obtained from sources believed to be reliable, but no representation or warranty, express or implied, is made with respect to the accuracy or completeness of any such information. Each prospective buyer or tenant should independently investigate, evaluate and verify all information provided herein and any other matters deemed material. Please consult your attorney, tax advisor or other professional advisor. The terms of sale or lease set forth herein are subject to change or withdrawal at any time and without notice.

FIRST LEVEL FLOOR PLAN

SUITE E-1 (21135) FEATURES

- Available 1/1/2024
- 3,495 SF
- \$27.00/SF, NNN
- Office/Retail space
- Reception area
- Open work area
- 1 Restroom
- Common lobby and back entrances
- Building signage available



LOCATION MAP

