

KENT BUSINESS CENTER

25316-25530 74th Avenue S, Kent, WA 98032



HIGH-IMAGE

OFC/WHSE/FLEX SPACE

1,388 SF - 18,163 SF Available

FEATURES:

- New Ownership Ready to Make Deals!
- Many Suite Sizes - Ready to Lease
- Quick Access to SR 167
- Flexible Office/Whse/Flex Configurations
- 12' - 16' Clear Height
- GL Loading
- \$0.55/SF Shell | \$0.75/SF Office

For more information, contact:

ROSEN~HARBOTTLE COMMERCIAL REAL ESTATE

Brian Stewart

(425) 289-2222

brians@rosenharbottle.com

Grant Rubenstein

(425) 289-2220

grant@rosenharbottle.com

www.rosenharbottle.com

Rosen~Harbottle Commercial Real Estate | P.O. Box 5003 Bellevue, WA 98009-5003
phone: (425) 454-3030 fax: (425) 454-6705 | www.rosenharbottle.com

The information provided has been obtained from sources believed reliable. While we do not doubt its accuracy, we have not verified and make no guarantee, warranty or representation about it. It is your sole responsibility to independently confirm its accuracy and completeness.

KENT BUSINESS CENTER

25316-25530 74th Avenue S, Kent, WA 98032

Building A

Suite	Total SF	Ofc SF	Whse SF
25402	2,077	1,300	777
25404	1,388	1,388	-
Contiguous	3,465	2,688	777
25426	2,070	1,198	872
25502	5,130	4,118	1,012



Rosen-Harbottle Commercial Real Estate | P.O. Box 5003 Bellevue, WA 98009-5003
phone: (425) 454-3030 fax: (425) 454-6705 | www.rosenharbottle.com

The information provided has been obtained from sources believed reliable. While we do not doubt its accuracy, we have not verified and make no guarantee, warranty or representation about it. It is your sole responsibility to independently confirm its accuracy and completeness.

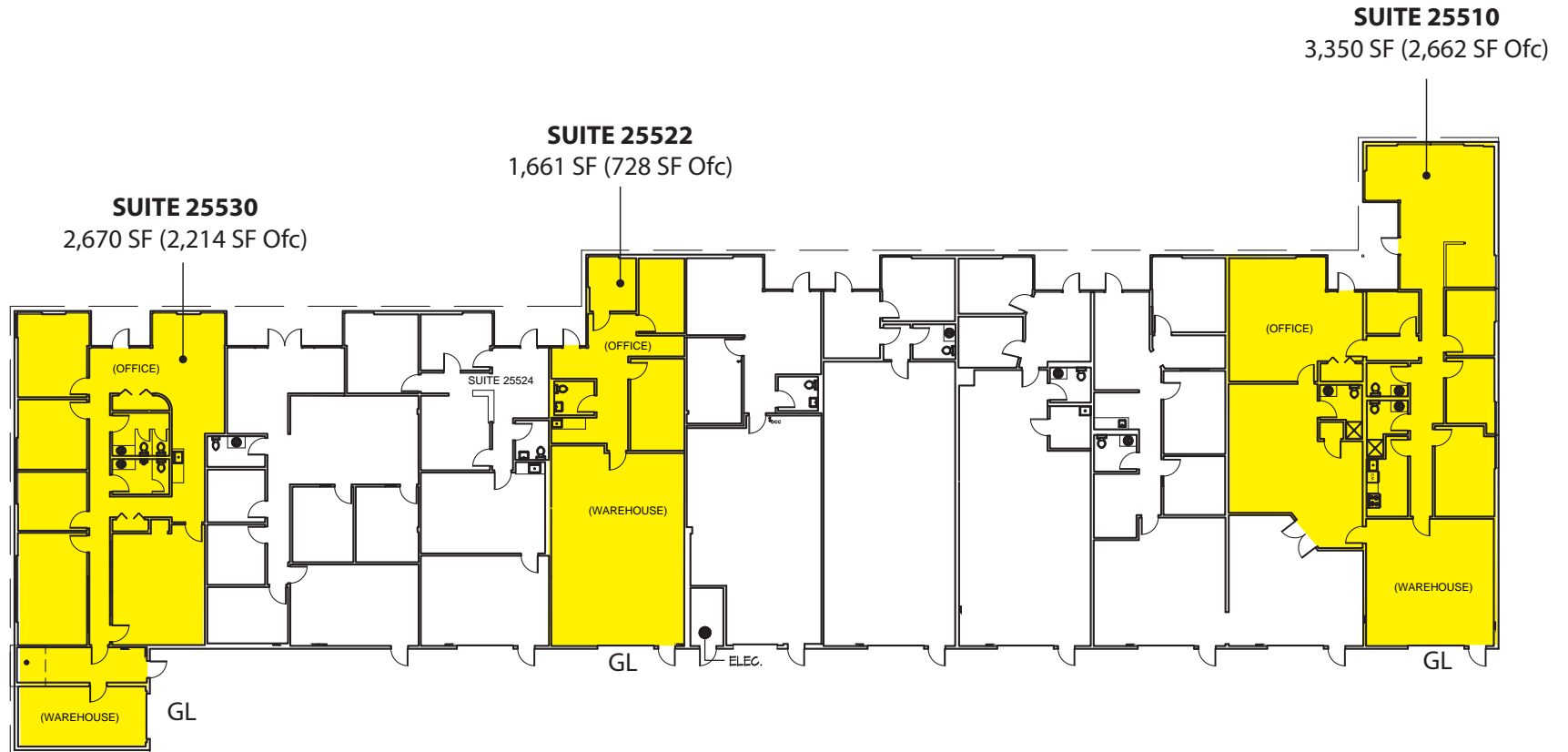


KENT BUSINESS CENTER

25316-25530 74th Avenue S, Kent, WA 98032

Building B

Suite	Total SF	Ofc SF	Whse SF
25510	3,350	2,662	688
25522	1,661	728	933
25530	2,670	2,214	456



Rosen-Harbottle Commercial Real Estate | P.O. Box 5003 Bellevue, WA 98009-5003
phone: (425) 454-3030 fax: (425) 454-6705 | www.rosenharbottle.com

The information provided has been obtained from sources believed reliable. While we do not doubt its accuracy, we have not verified and make no guarantee, warranty or representation about it. It is your sole responsibility to independently confirm its accuracy and completeness.

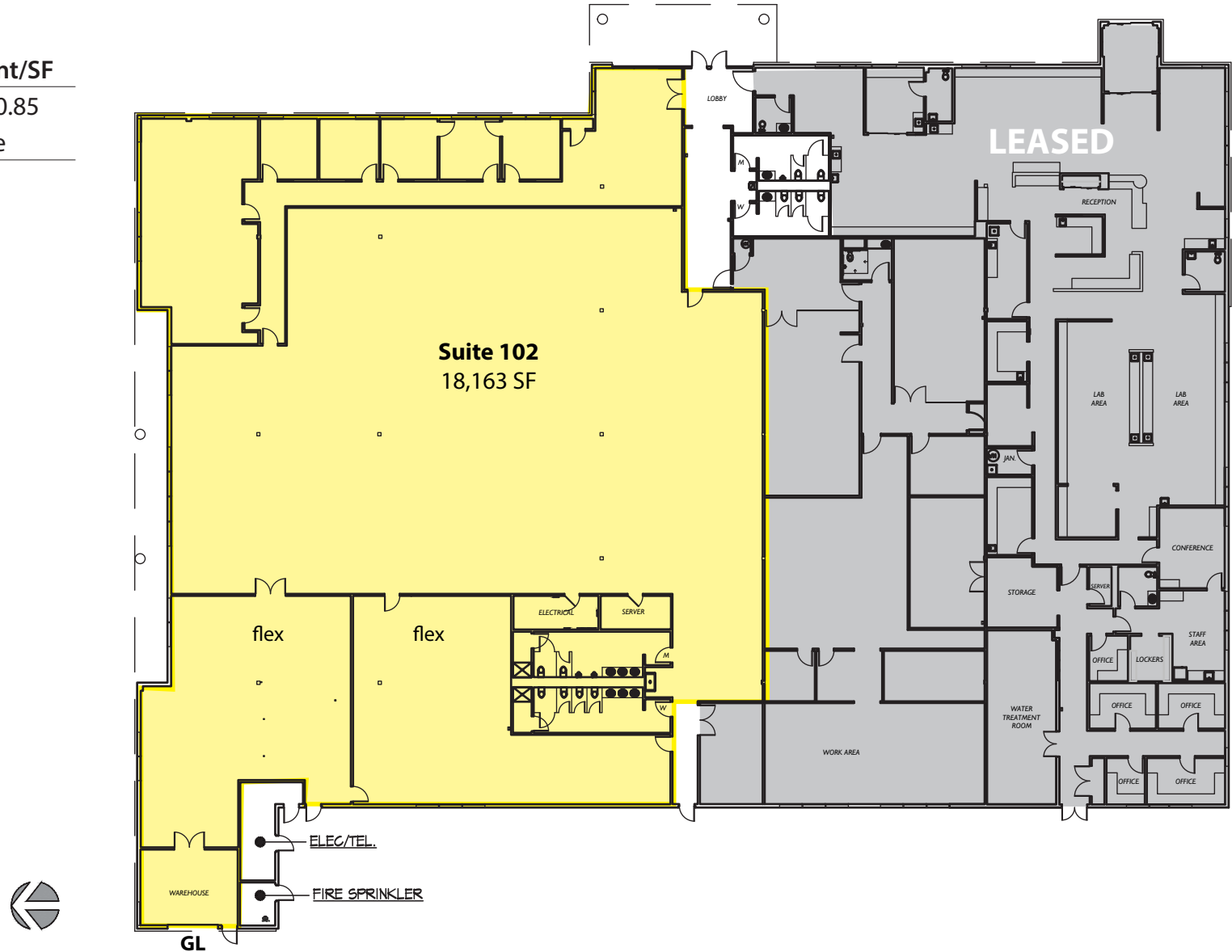
KENT BUSINESS CENTER

25316-25530 74th Avenue S, Kent, WA 98032

Building C

Suite	Total SF	Rent/SF
25316-102	18,163	\$0.85

Notes: HVAC throughout space



Rosen-Harbottle Commercial Real Estate | P.O. Box 5003 Bellevue, WA 98009-5003
phone: (425) 454-3030 fax: (425) 454-6705 | www.rosenharbottle.com

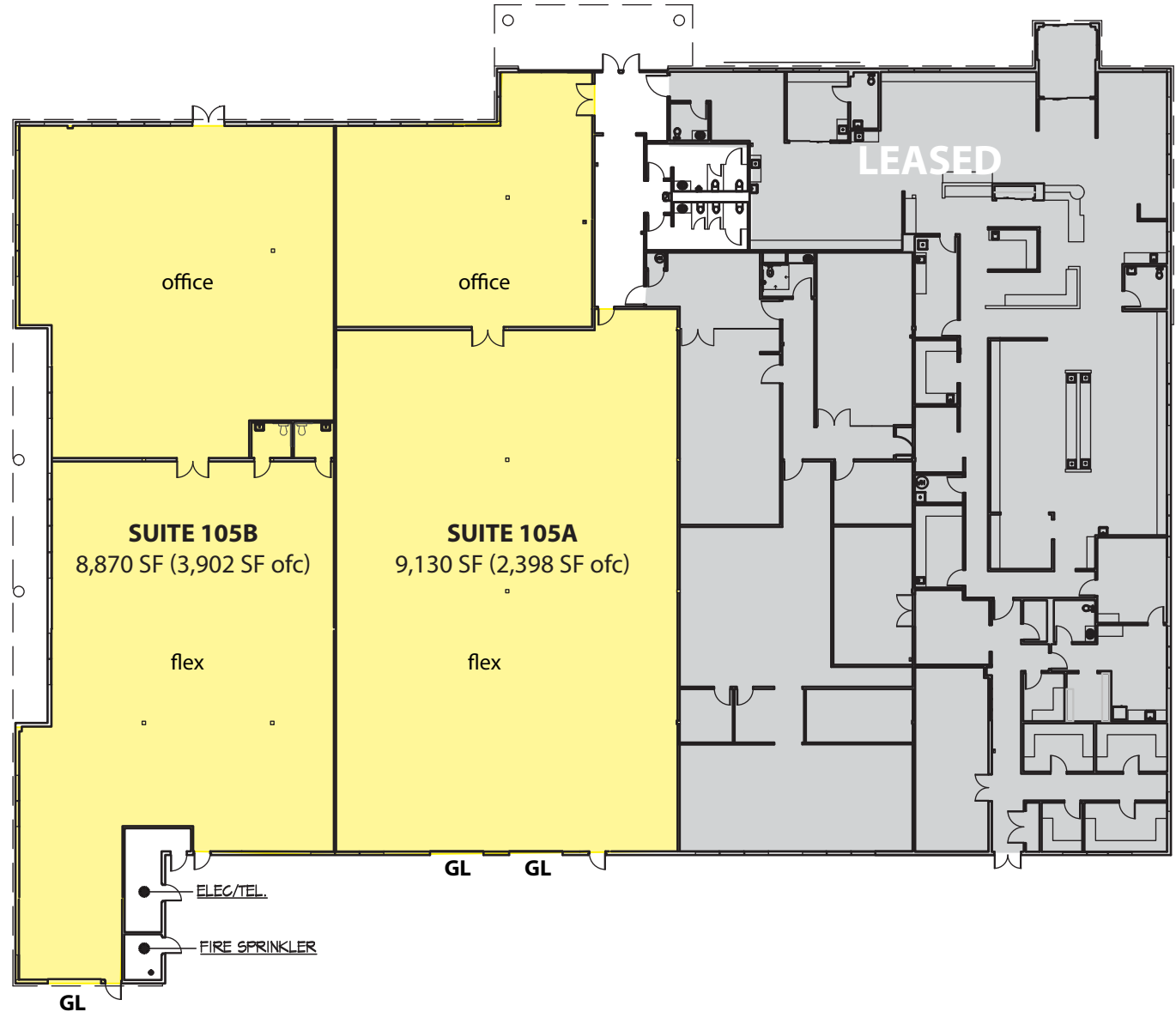
The information provided has been obtained from sources believed reliable. While we do not doubt its accuracy, we have not verified and make no guarantee, warranty or representation about it. It is your sole responsibility to independently confirm its accuracy and completeness.

KENT BUSINESS CENTER

25316-25530 74th Avenue S, Kent, WA 98032

Building C

Suite 102 - Option A (Sample)

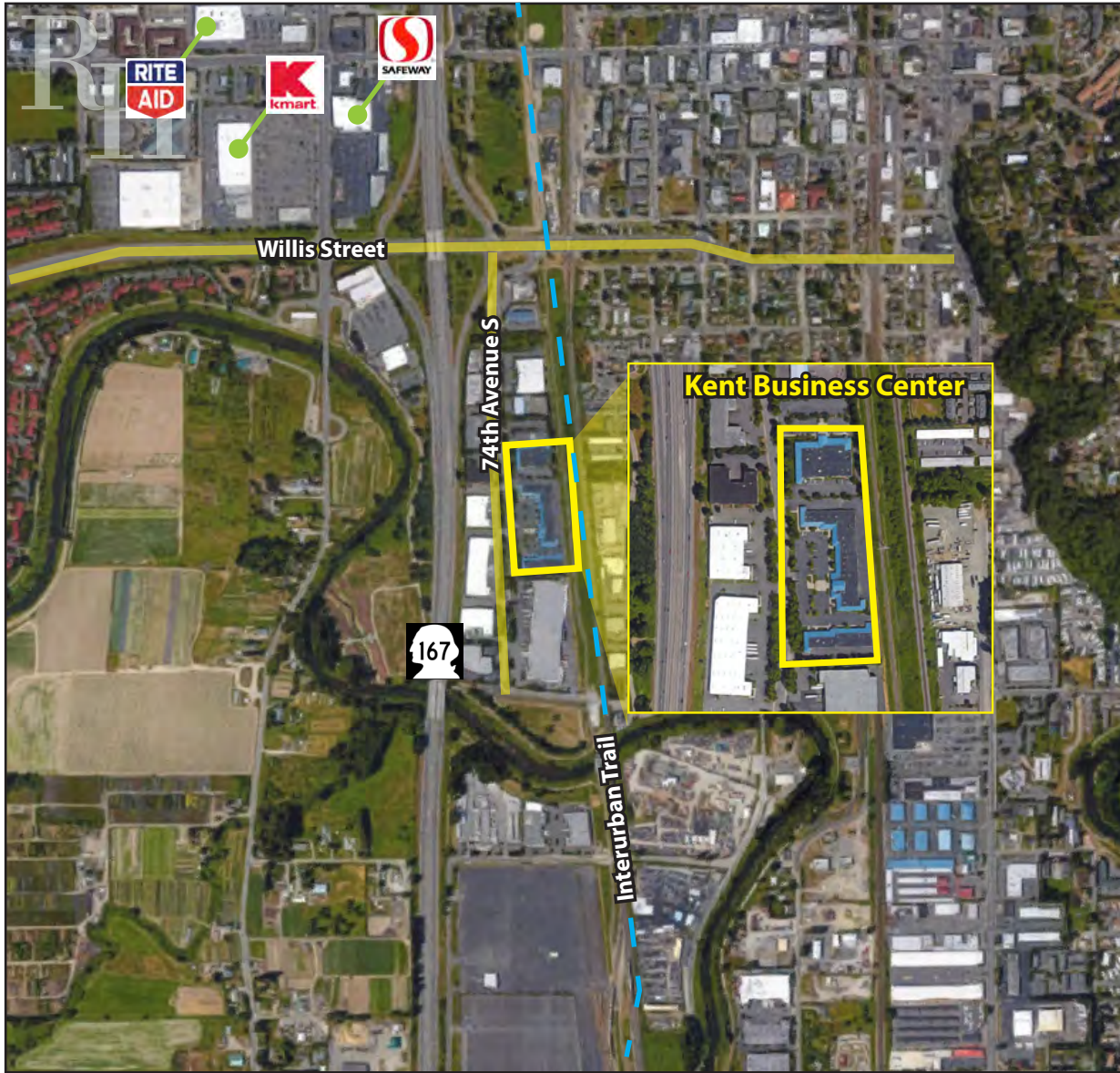


Rosen-Harbottle Commercial Real Estate | P.O. Box 5003 Bellevue, WA 98009-5003
phone: (425) 454-3030 fax: (425) 454-6705 | www.rosenharbottle.com

The information provided has been obtained from sources believed reliable. While we do not doubt its accuracy, we have not verified and make no guarantee, warranty or representation about it. It is your sole responsibility to independently confirm its accuracy and completeness.

KENT BUSINESS CENTER

25316-25530 74th Avenue S, Kent, WA 98032



For more information, contact:

**ROSEN~HARBOTTLE
COMMERCIAL REAL ESTATE**

Brian Stewart
(425) 289-2222
brians@rosenharbottle.com

Grant Rubenstein
(425) 289-2220
grant@rosenharbottle.com
www.rosenharbottle.com

Rosen~Harbottle Commercial Real Estate | P.O. Box 5003 Bellevue, WA 98009-5003
phone: (425) 454-3030 fax: (425) 454-6705 | www.rosenharbottle.com

The information provided has been obtained from sources believed reliable. While we do not doubt its accuracy, we have not verified and make no guarantee, warranty or representation about it. It is your sole responsibility to independently confirm its accuracy and completeness.