

OFC/WHSE  
**LEASE**



## **EASTLAKE BUSINESS PARK, Building D**

**18336-18398 Redmond-Fall City Road | Redmond, WA 98052**

**Caleb Farnworth, CCIM**

425.289.2235

calebf@rosenharbottle.com

425.454.3030  
rosenharbottle.com

PO Box 5003  
Bellevue, WA 98009 - 5003





# OFFICE/WAREHOUSE SPACE AVAILABLE

**\$3,300/Month, NNN**

**2,197 SF (1,569 SF OFC)**

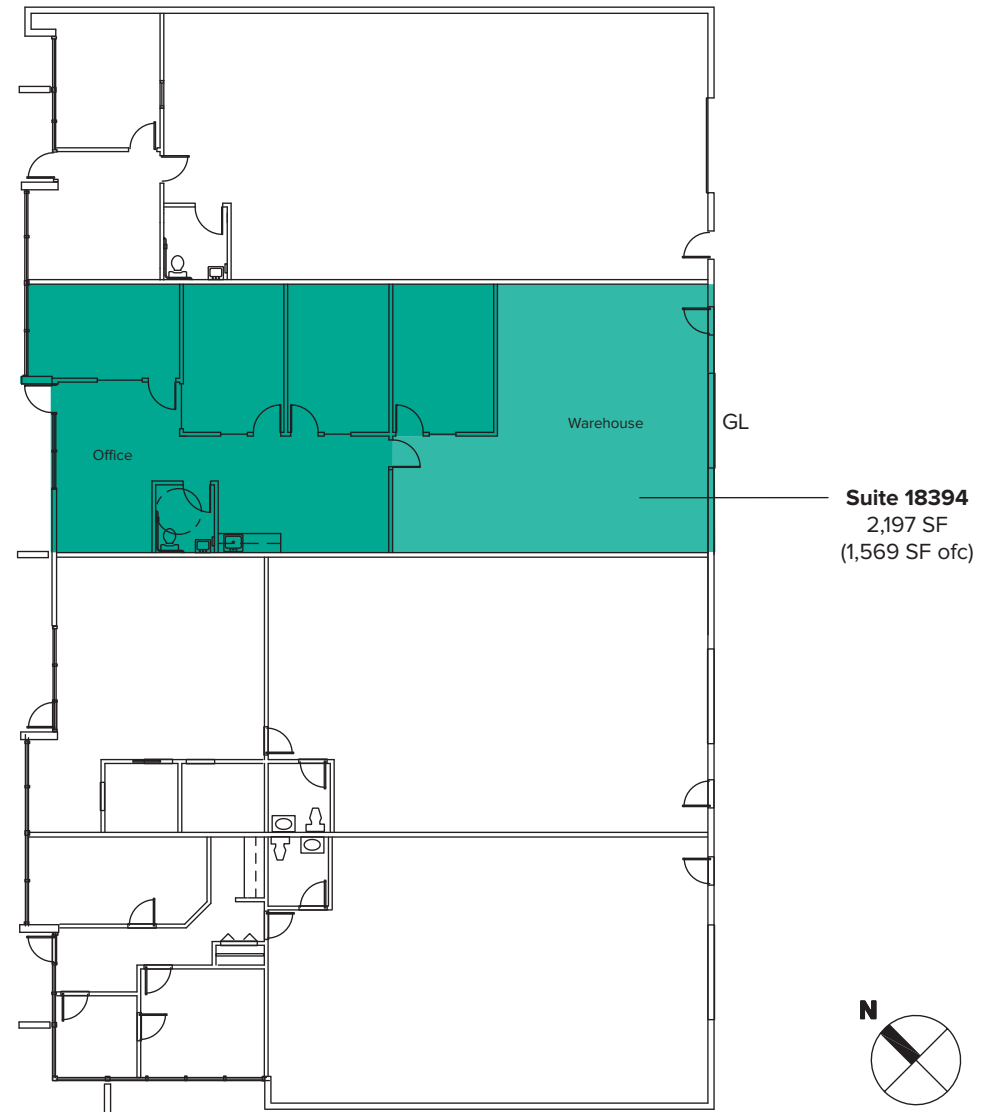
## BUILDING DETAILS:

- Professional, Business Park Setting
- Quick Access to SR 520, Union Hill & Downtown Redmond
- Nearby Amenities Include Home Depot, Whole Foods, Chipotle, Target, Kohl's, Costco & More
- Located Minutes From Future Light Rail Stations

# BUILDING D FLOOR PLAN

## SUITE FEATURES:

- **Available 11/1/2019**
- **2,197 SF (1,569 SF ofc)**
- **\$3,300/Month, NNN**
- 5 Private Offices
- Kitchenette
- 1 Restroom
- Open Office Area
- Reception Area
- 1 GL Roll-up Loading Door
- 14' - 16' Clear Height in Warehouse



# LOCATION MAP

