

**DENTAL & OFFICE
AVAILABLE**



MEADOW CREEK OFFICE PARK

22500 - 22619 SE 64th Place | Issaquah, WA

Brian Stewart

425.289.2222

brians@rosenharbottle.com

425.454.3030
rosenharbottle.com

PO Box 5003
Bellevue, WA 98009 - 5003





CLASS A DENTAL & OFFICE SPACES AVAILABLE

1,161 SF - 3,015 SF

\$28.00 - \$33.00/SF, NNN

OFFICE PARK DETAILS:

- Minutes from Costco Headquarters
- Amazing Location off I-90 at Front St/E Lake Sammamish Pkwy
- Nearby Amenities Include Retailers, Grocers, Restaurants, Hospital & Parks
- Park-Like, Campus Setting with Free Surface Parking

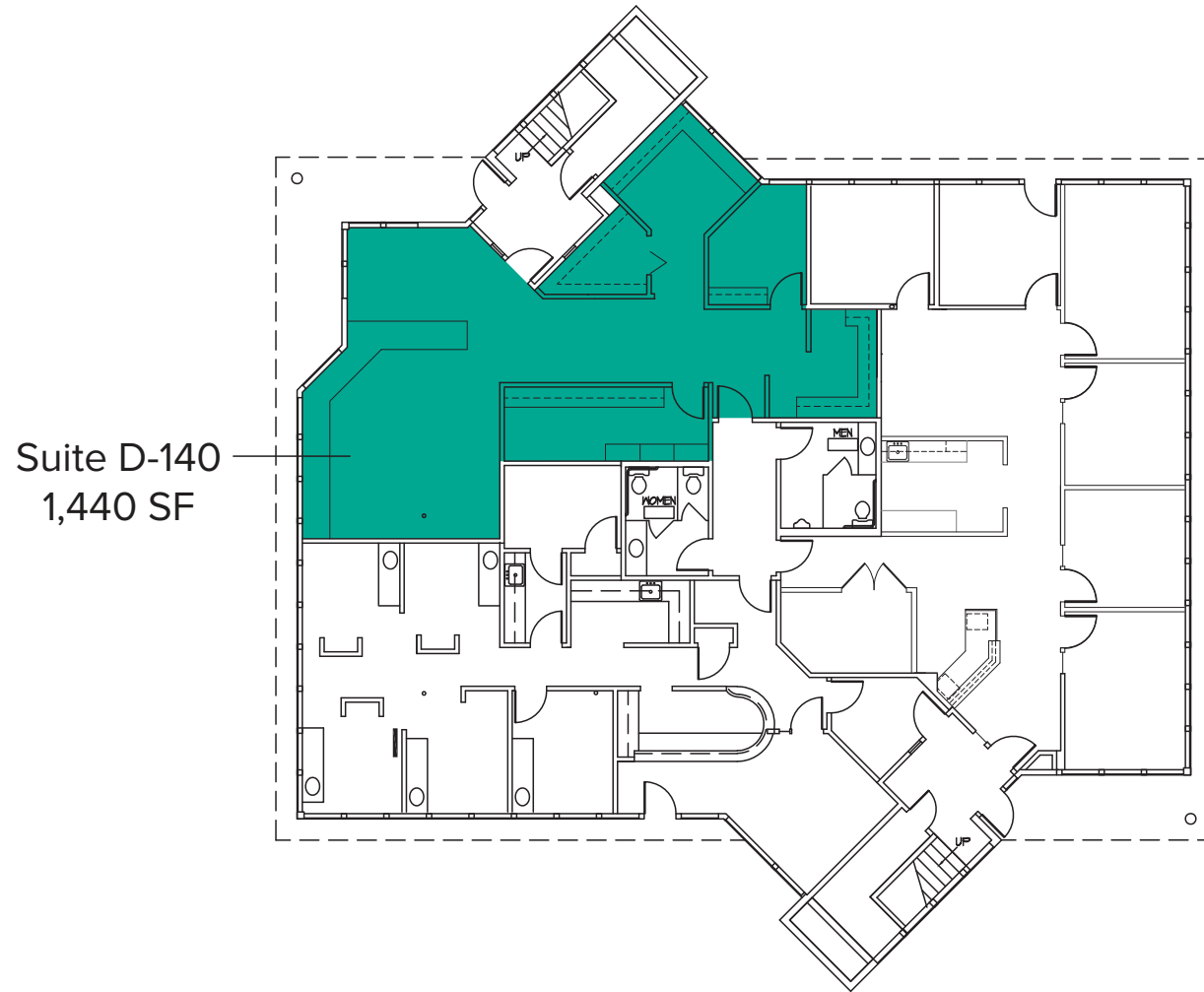
The information provided herein has been obtained from sources believed to be reliable, but no representation or warranty, express or implied, is made with respect to the accuracy or completeness of any such information. Each prospective buyer or tenant should independently investigate, evaluate and verify all information provided herein and any other matters deemed material. Please consult your attorney, tax advisor or other professional advisor. The terms of sale or lease set forth herein are subject to change or withdrawal at any time and without notice.

BUILDING D (22526) FLOOR PLAN

Suite	Square Feet	Rate
D-140	1,440 SF	\$28.00/SF, NNN

Notes: First floor office with 1 private room, reception area, break room, and open work space.

Available Now.



The information provided herein has been obtained from sources believed to be reliable, but no representation or warranty, express or implied, is made with respect to the accuracy or completeness of any such information. Each prospective buyer or tenant should independently investigate, evaluate and verify all information provided herein and any other matters deemed material. Please consult your attorney, tax advisor or other professional advisor. The terms of sale or lease set forth herein are subject to change or withdrawal at any time and without notice.

BUILDING G (22500) FIRST LEVEL FLOOR PLAN

Suite	Square Feet	Rate
G-110	3,015 SF	\$33.00/SF, NNN

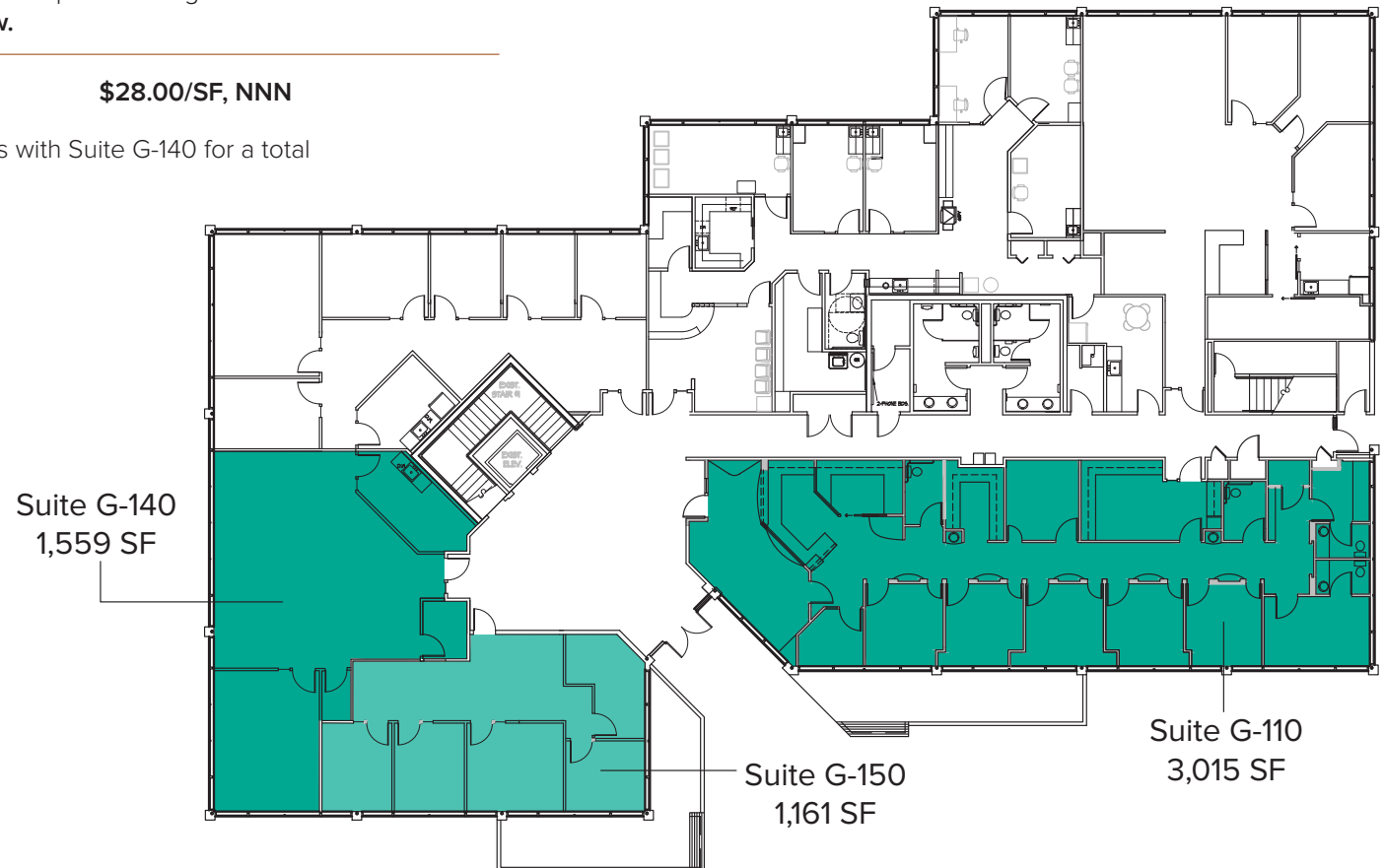
Former dental office with private rooms, reception/lobby area, break room, 4 restrooms, and 2 entrances. **Available 1/1/2022**

G-140	1,559 SF - 2,720 SF	\$28.00/SF, NNN
-------	---------------------	-----------------

1 private office, break room, storage, and open work space. Contiguous with Suite G-150 for a total of 2,720 SF. **Available Now.**

G-150	1,161 SF - 2,720 SF	\$28.00/SF, NNN
-------	---------------------	-----------------

5 private offices and open work area. Contiguous with Suite G-140 for a total of 2,720 SF. **Available Now.**

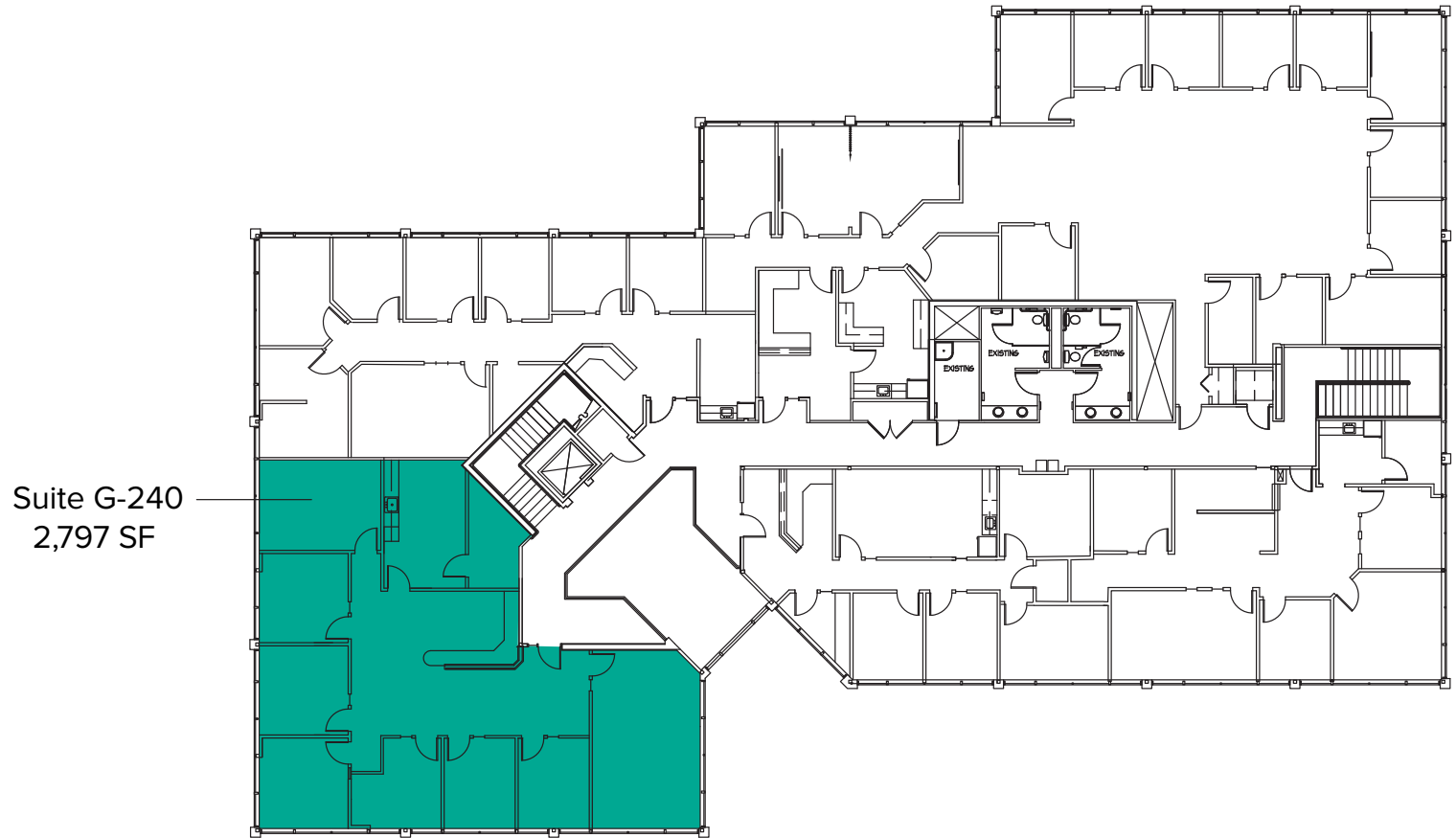


The information provided herein has been obtained from sources believed to be reliable, but no representation or warranty, express or implied, is made with respect to the accuracy or completeness of any such information. Each prospective buyer or tenant should independently investigate, evaluate and verify all information provided herein and any other matters deemed material. Please consult your attorney, tax advisor or other professional advisor. The terms of sale or lease set forth herein are subject to change or withdrawal at any time and without notice.

BUILDING G (22500) SECOND LEVEL FLOOR PLAN

Suite	Square Feet	Rate
G-240	2,797 SF	\$28.00/SF, NNN

7 private offices, conference room, break room with kitchenette, and reception area.
Available 10/1/2021.



SITE PLAN



LOCATION MAP

