

# Fountain Plaza I & II

501 & 505 S 336th Street, Federal Way, WA



**FOR LEASE**

Class A Office Space in West Campus Federal Way  
2017 renovations of lobby/common area

**Will Frame**  
253.722.1412  
wframe@kiddermathews.com

**Mark Clirehugh, SIOR, CCIM**  
253.722.1416  
markc@kiddermathews.com

**Drew Frame**  
253.722.1433  
dframe@kiddermathews.com

[kiddermathews.com](http://kiddermathews.com)

**km** Kidder  
Mathews

# Fountain Plaza I & II

501 & 505 S 336th Street, Federal Way, WA

## Class "A" Office Space

### AVAILABLE

Building I: 625 - 6,455 SF  
Building II: 1,149 - 7,323 SF

### RATE

\$23.50 PSF, per year, full service

### PARKING

Surface parking at 4.7/1,000

### RENOVATIONS

2017 renovations of lobby, common area, restrooms and building exterior

### LOCATION

On the corner of 336th and 1st, the hub of West Campus Office

### ACCESS

Easy access to Hwy 18, Hwy 99 and I-5

## Availabilities

### BUILDING I

Suite 200	6,455 SF
Suite 320	2,646 SF
Suite 330	3,913 SF
Suite 413	625 SF
Suite 510	3,645 SF

### BUILDING II

Suite 201	2,368 SF
Suite 202	1,300 SF - 7,323 SF
Suite 230	1,149 SF



**Will Frame**

253.722.1412

wframe@kiddermathews.com

**Mark Clirehugh, SIOR, CCIM**

253.722.1416

markc@kiddermathews.com

**Drew Frame**

253.722.1433

dframe@kiddermathews.com

[kiddermathews.com](http://kiddermathews.com)



# Fountain Plaza I & II

501 & 505 S 336th Street, Federal Way, WA



**Will Frame**  
253.722.1412  
wframe@kiddermathews.com

**Mark Clirehugh, SIOR, CCIM**  
253.722.1416  
markc@kiddermathews.com

**Drew Frame**  
253.722.1433  
dframe@kiddermathews.com

[kiddermathews.com](http://kiddermathews.com)



# Fountain Plaza I & II

501 & 505 S 336th Street, Federal Way, WA

## Floor Plan - Fountain Plaza I

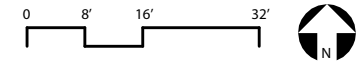


### LEVEL 02 RENTABLE FLOOR PLAN

1/16" = 1'-0" (When printed @ 11"x17")

### FOUNTAIN PLAZA

505 S 336th St | Federal Way, WA



**Will Frame**  
253.722.1412  
wframe@kiddermathews.com

**Mark Clirehugh, SIOR, CCIM**  
253.722.1416  
markc@kiddermathews.com

**Drew Frame**  
253.722.1433  
dframe@kiddermathews.com

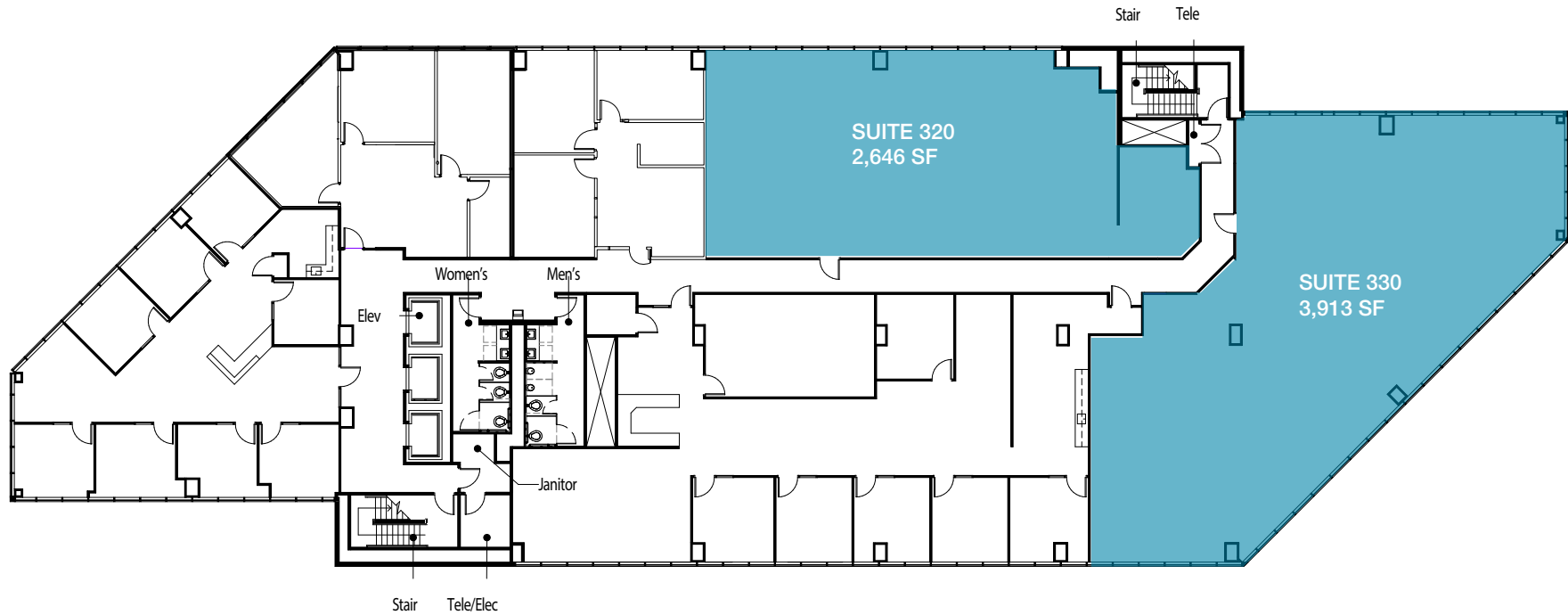
[kiddermathews.com](http://kiddermathews.com)



# Fountain Plaza I & II

501 & 505 S 336th Street, Federal Way, WA

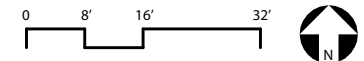
## Floor Plan - Fountain Plaza I



### LEVEL 03 RENTABLE FLOOR PLAN

1/16" = 1'-0" (When Printed @ 11" x 17")

**FOUNTAIN PLAZA**  
505 S 336th St | Federal Way, WA



**Will Frame**  
253.722.1412  
wframe@kiddermathews.com

**Mark Clirehugh, SIOR, CCIM**  
253.722.1416  
markc@kiddermathews.com

**Drew Frame**  
253.722.1433  
dframe@kiddermathews.com

[kiddermathews.com](http://kiddermathews.com)

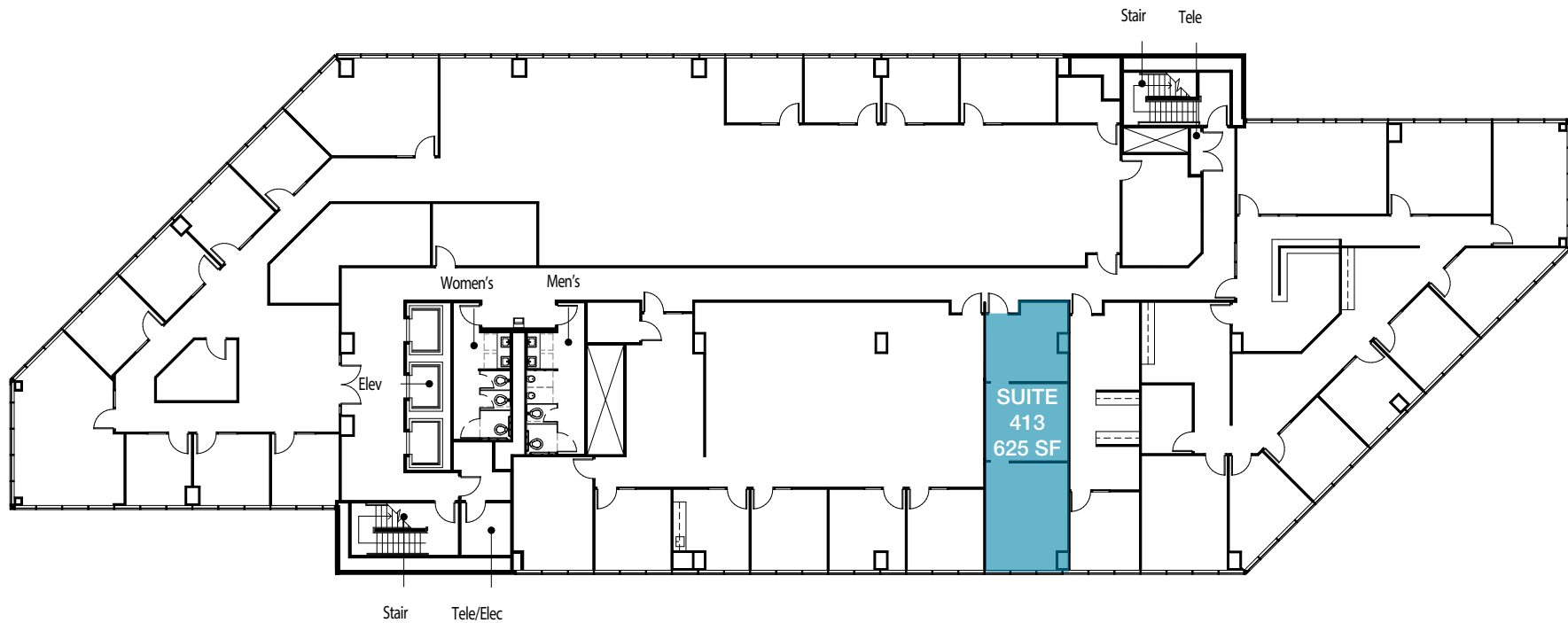


This information supplied herein is from sources we deem reliable. It is provided without any representation, warranty or guarantee, expressed or implied as to its accuracy. Prospective Buyer or Tenant should conduct an independent investigation and verification of all matters deemed to be material, including, but not limited to, statements of income and expenses. Consult your attorney, accountant, or other professional advisor.

# Fountain Plaza I & II

501 & 505 S 336th Street, Federal Way, WA

## Floor Plan - Fountain Plaza I

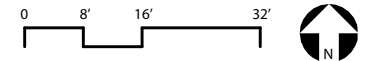


### LEVEL 04 RENTABLE FLOOR PLAN

1/16" = 1'-0" (When Printed @ 11" x 17")

FOUNTAIN PLAZA  
505 S 336th St | Federal Way, WA

**RH** ROSEN  
HARBOTTLE  
COMMERCIAL REAL ESTATE



**Will Frame**  
253.722.1412  
wframe@kiddermathews.com

**Mark Clirehugh, SIOR, CCIM**  
253.722.1416  
markc@kiddermathews.com

**Drew Frame**  
253.722.1433  
dframe@kiddermathews.com

[kiddermathews.com](http://kiddermathews.com)

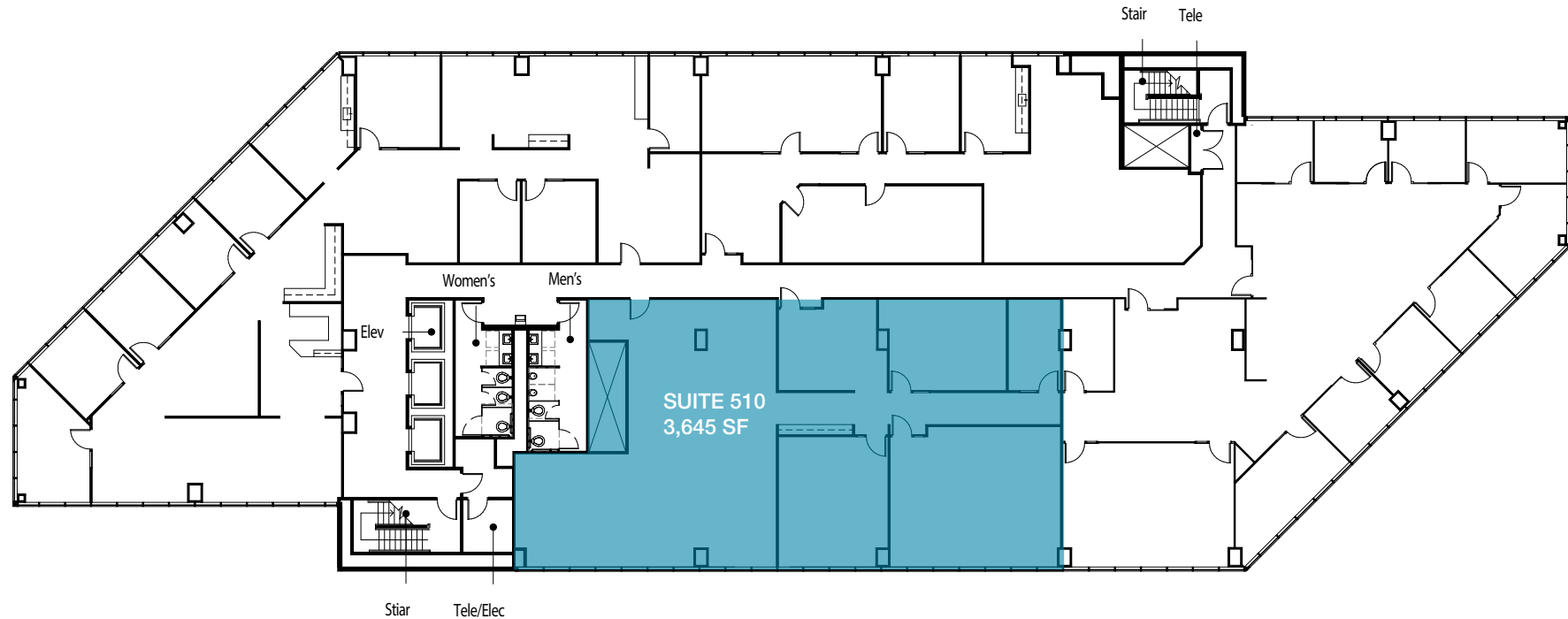


This information supplied herein is from sources we deem reliable. It is provided without any representation, warranty or guarantee, expressed or implied as to its accuracy. Prospective Buyer or Tenant should conduct an independent investigation and verification of all matters deemed to be material, including, but not limited to, statements of income and expenses. Consult your attorney, accountant, or other professional advisor.

# Fountain Plaza I & II

501 & 505 S 336th Street, Federal Way, WA

## Floor Plan - Fountain Plaza I

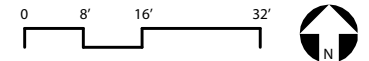


### LEVEL 05 RENTABLE FLOOR PLAN

1/16" = 1'-0" (When Printed @ 11" x 17")

FOUNTAIN PLAZA  
505 S 336th St | Federal Way, WA

**RH** ROSEN  
HARBOTTLE  
COMMERCIAL REAL ESTATE



**Will Frame**  
253.722.1412  
wframe@kiddermathews.com

**Mark Clirehugh, SIOR, CCIM**  
253.722.1416  
markc@kiddermathews.com

**Drew Frame**  
253.722.1433  
dframe@kiddermathews.com

[kiddermathews.com](http://kiddermathews.com)

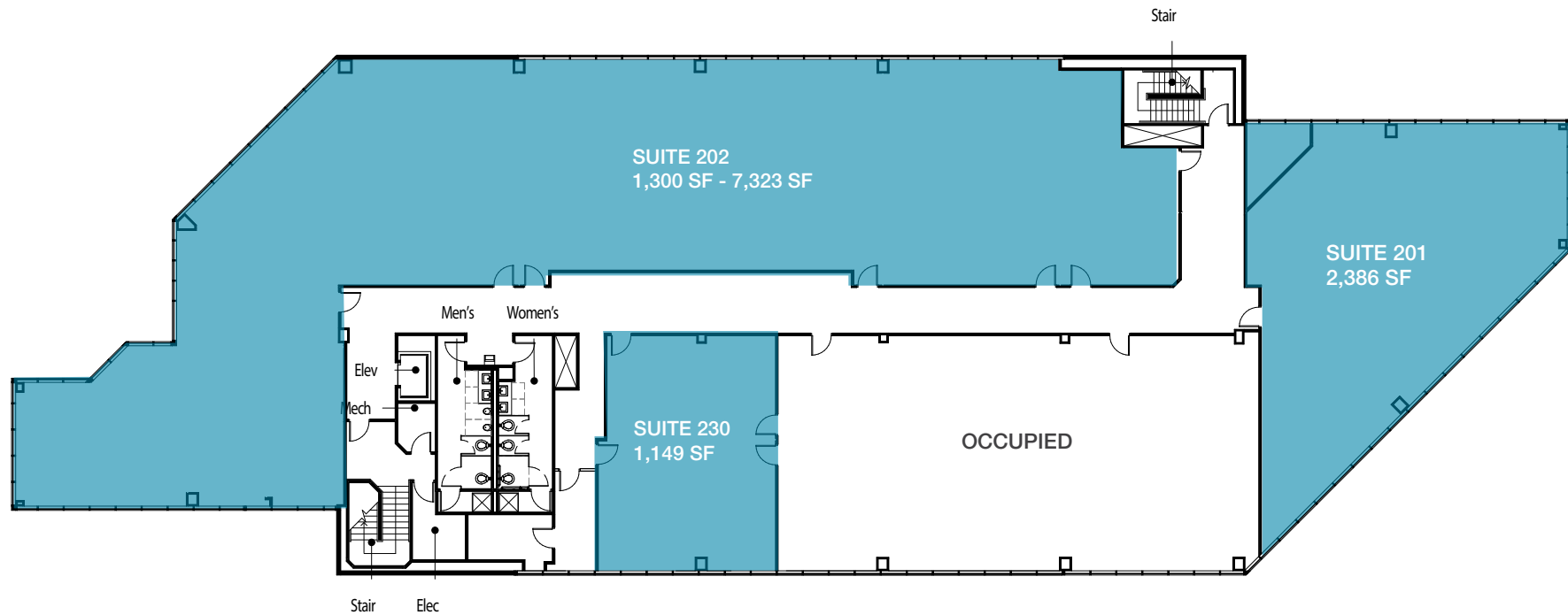
**km** Kidder  
Mathews

This information supplied herein is from sources we deem reliable. It is provided without any representation, warranty or guarantee, expressed or implied as to its accuracy. Prospective Buyer or Tenant should conduct an independent investigation and verification of all matters deemed to be material, including, but not limited to, statements of income and expenses. Consult your attorney, accountant, or other professional advisor.

# Fountain Plaza I & II

501 & 505 S 336th Street, Federal Way, WA

## Floor Plan - Fountain Plaza II

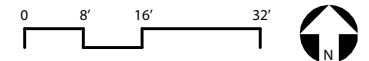


### LEVEL 02 RENTABLE FLOOR PLAN

1/16" = 1'-0" (When Printed @ 11" x 17")

### FOUNTAIN PLAZA II

501 S 336th St | Federal Way, WA



#### Will Frame

253.722.1412

wframe@kiddermathews.com

#### Mark Clirehugh, SIOR, CCIM

253.722.1416

markc@kiddermathews.com

#### Drew Frame

253.722.1433

dframe@kiddermathews.com

[kiddermathews.com](http://kiddermathews.com)



This information supplied herein is from sources we deem reliable. It is provided without any representation, warranty or guarantee, expressed or implied as to its accuracy. Prospective Buyer or Tenant should conduct an independent investigation and verification of all matters deemed to be material, including, but not limited to, statements of income and expenses. Consult your attorney, accountant, or other professional advisor.