

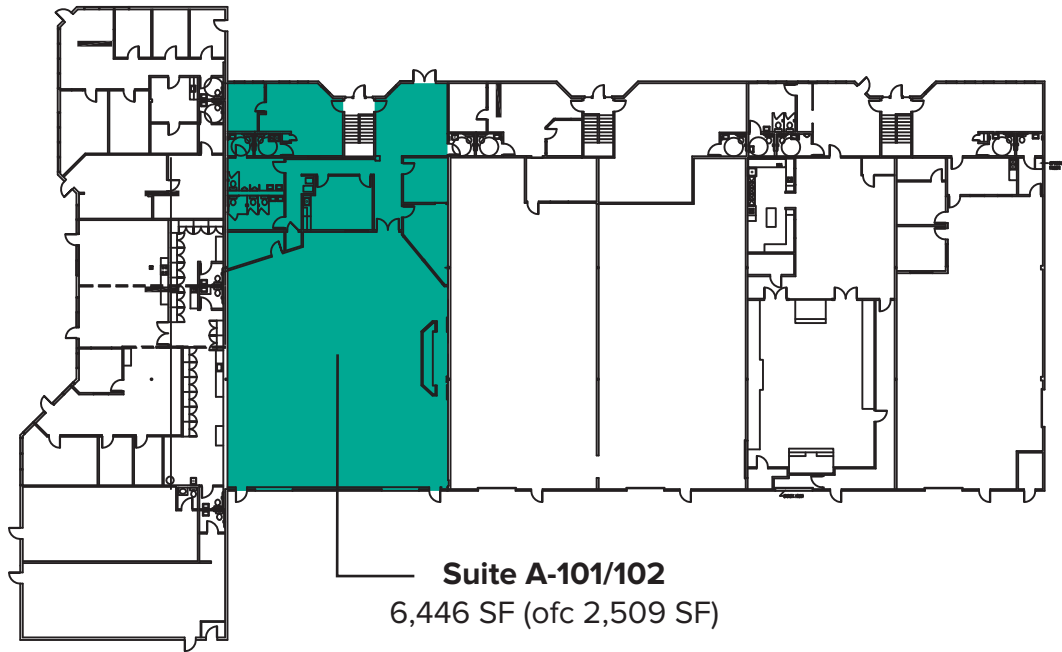
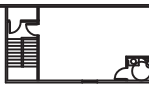
Suite A-201
635 SF



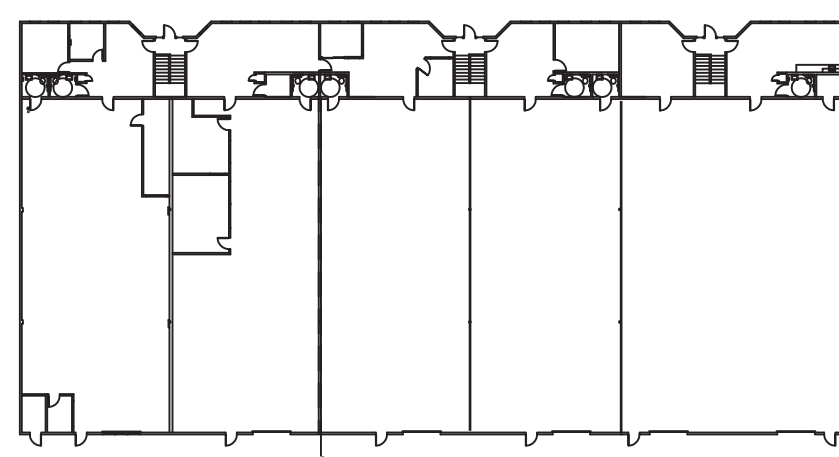
Suite A-205
725 SF



Suite B-201
1,635 SF



Suite A-101/102
6,446 SF (ofc 2,509 SF)



SITE PLAN

NOT TO SCALE

LYNNWOOD EAST BUSINESS PARK

2027 - 2031 196th STREET S. W.
LYNNWOOD, WA



ROSEN HARBOTTLE
COMMERCIAL REAL ESTATE