

OFFICE  
LEASE



## RH TECH CENTER II

19803 North Creek Parkway N | Bothell, WA

**Brian Stewart**

425.289.2222

brians@rosenharbottle.com

425.454.3030  
rosenharbottle.com

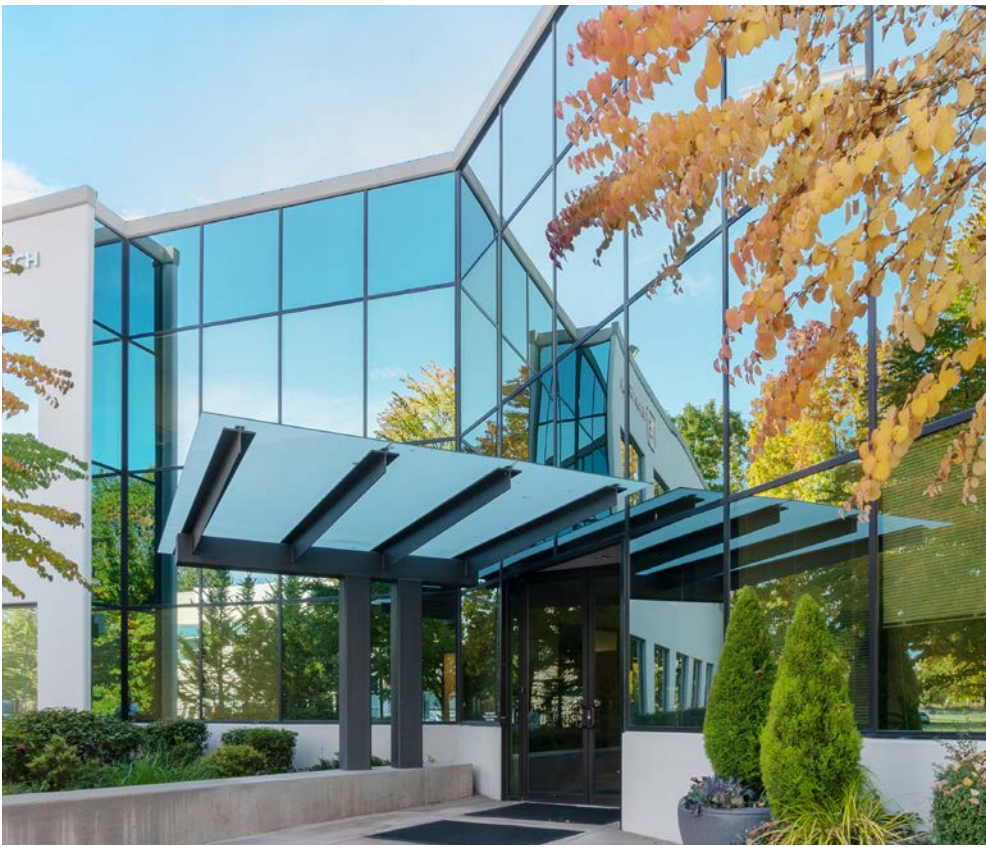
**Caleb Farnworth, CCIM**

425.289.2235

calebf@rosenharbottle.com

PO Box 5003  
Bellevue, WA 98009 - 5003





# LARGE CORPORATE-IMAGE, CLASS A OFFICE SPACES

**2,777 SF - 9,964 SF Available**

**\$21.00 - \$24.00/SF, NNN**

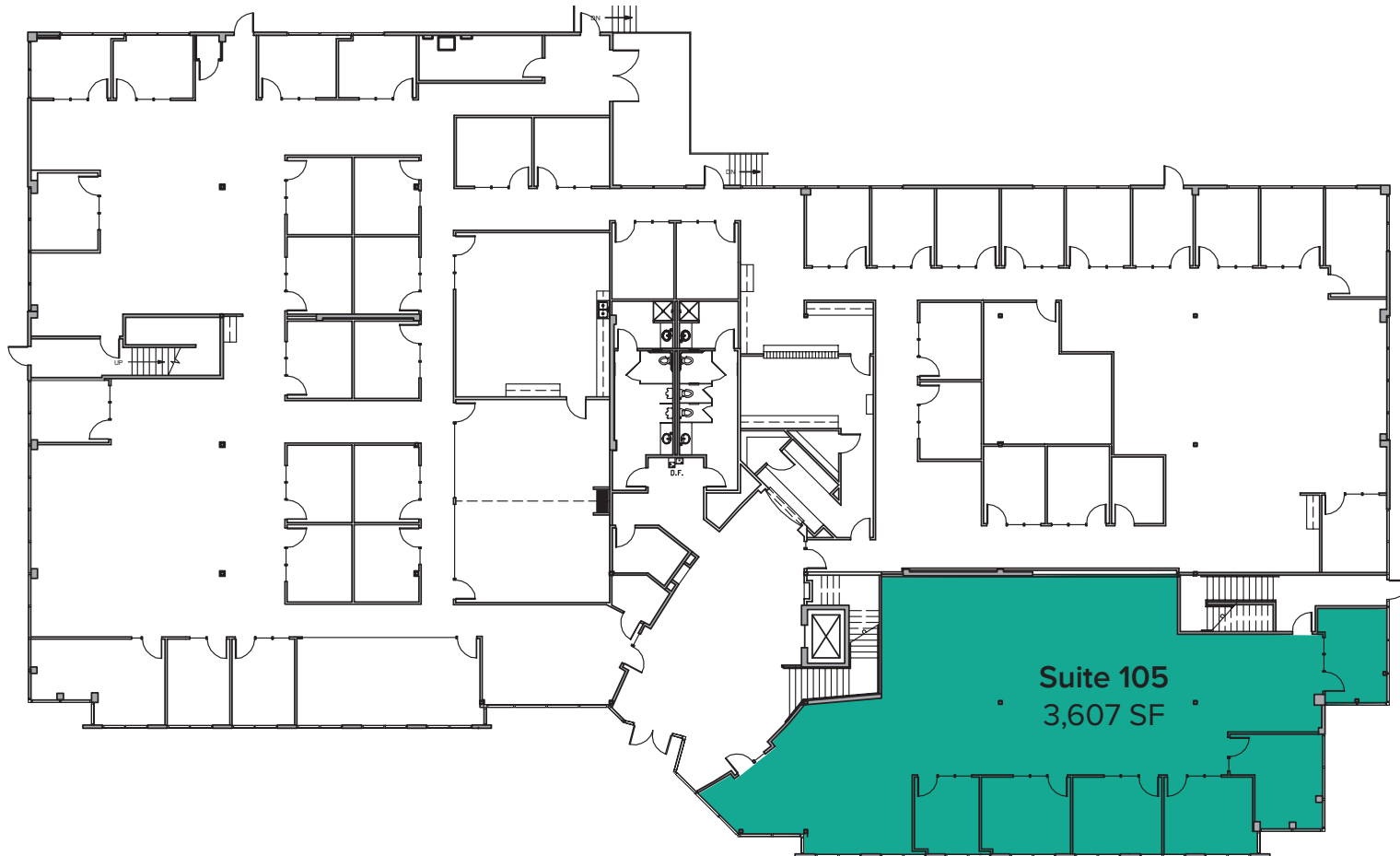
## FEATURES:

- Quick Access to I-405, SR-522, Downtown Bothell, and Downtown Woodinville
- 1 Block from Restaurants & Retail Shops
- Corporate Neighbors Include Google, AT&T, T-Mobile and Puget Sound Energy
- Directly Adjacent to Bright Horizons Child Care, Sports Fields, and Jogging Trail

The information provided herein has been obtained from sources believed to be reliable, but no representation or warranty, express or implied, is made with respect to the accuracy or completeness of any such information. Each prospective buyer or tenant should independently investigate, evaluate and verify all information provided herein and any other matters deemed material. Please consult your attorney, tax advisor or other professional advisor. The terms of sale or lease set forth herein are subject to change or withdrawal at any time and without notice.

# FLOOR PLAN - 1<sup>st</sup> FLOOR

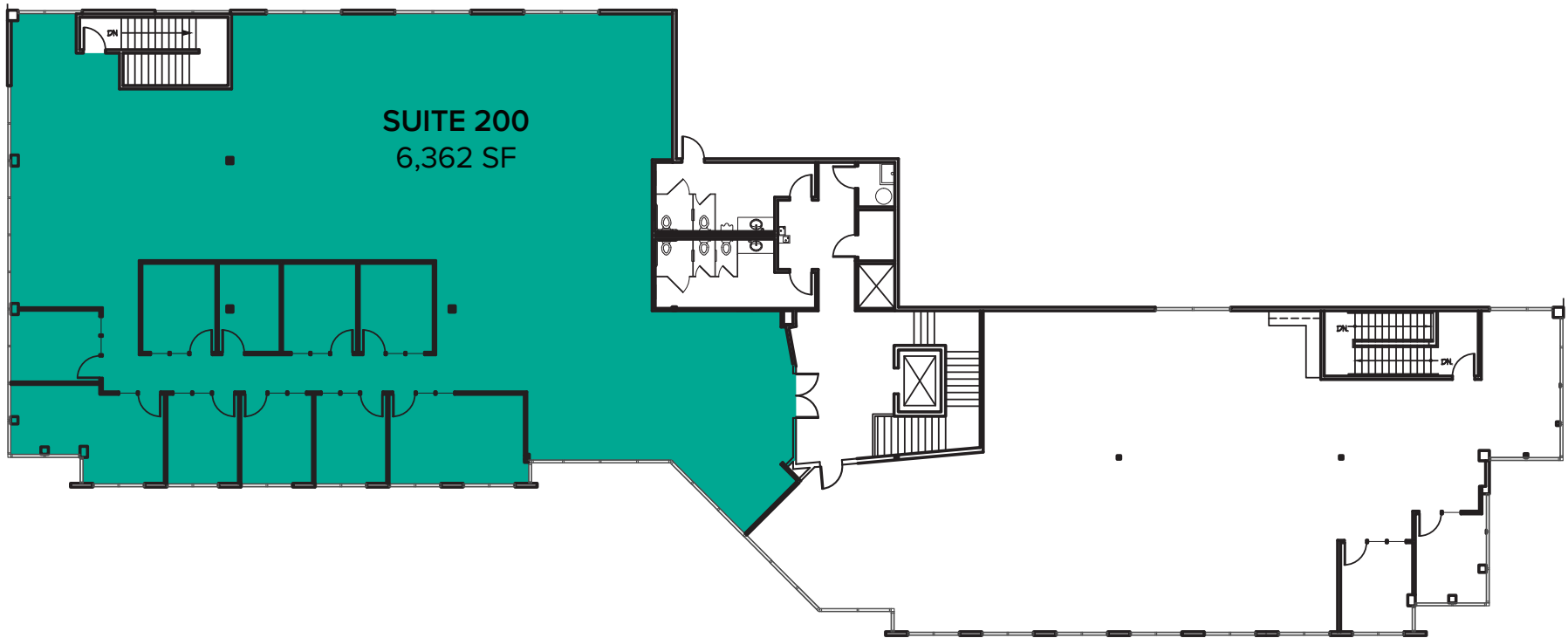
Suite	SF	Rate	Notes
105	3,607 SF	\$24.00/SF NNN	6 private offices, reception area, and open office space. Can be combined with Suite 200 for a total of 9,964 SF. <b>Available now.</b>



The information provided herein has been obtained from sources believed to be reliable, but no representation or warranty, express or implied, is made with respect to the accuracy or completeness of any such information. Each prospective buyer or tenant should independently investigate, evaluate and verify all information provided herein and any other matters deemed material. Please consult your attorney, tax advisor or other professional advisor. The terms of sale or lease set forth herein are subject to change or withdrawal at any time and without notice.

# FLOOR PLAN - 2<sup>nd</sup> FLOOR (AS IS)

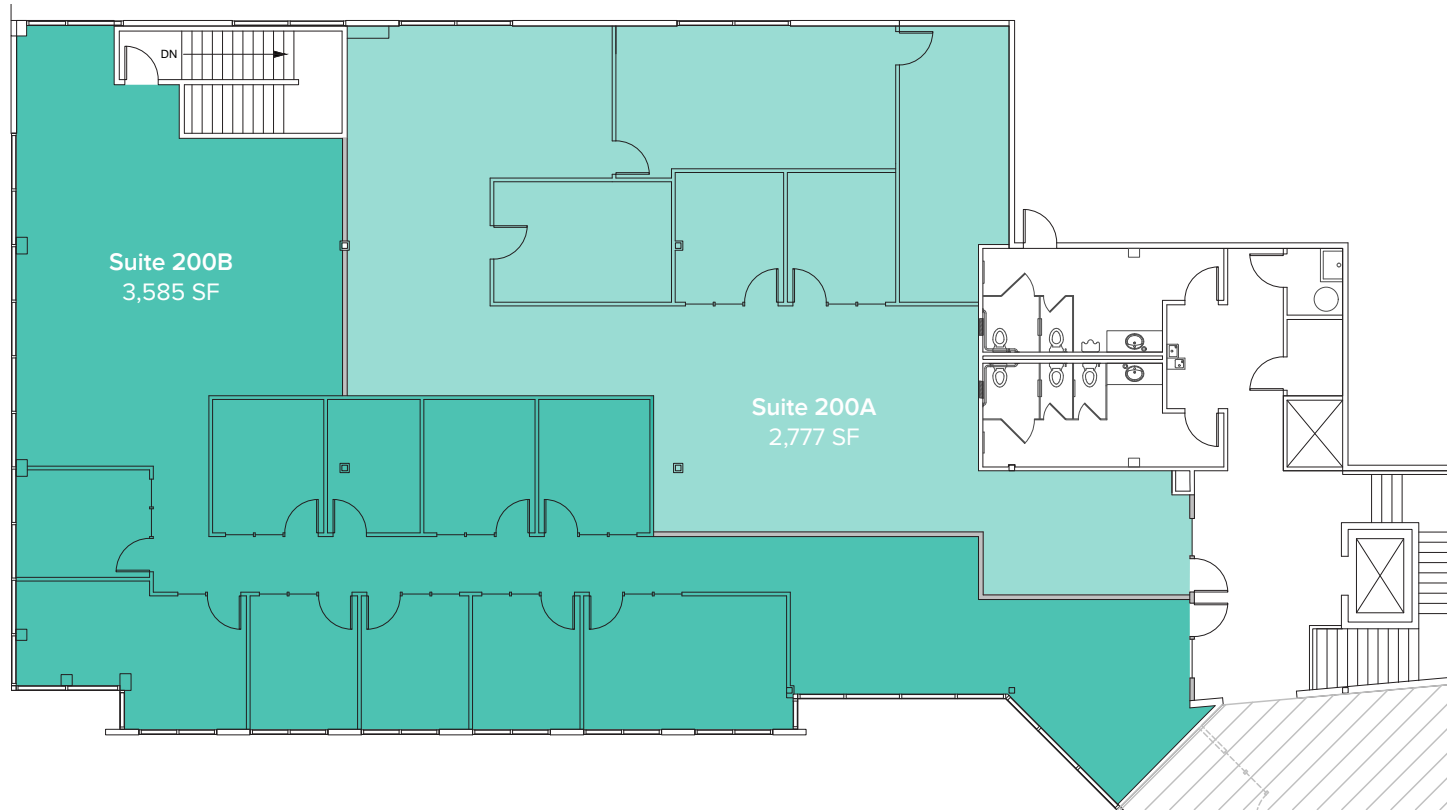
Suite	SF	Rate	Notes
200	6,362 SF	\$21.00/SF NNN	9 private offices, 1 conference room, and open office area. Can be combined with Suite 105 for a total of 9,964 SF. <b>Available now.</b>



The information provided herein has been obtained from sources believed to be reliable, but no representation or warranty, express or implied, is made with respect to the accuracy or completeness of any such information. Each prospective buyer or tenant should independently investigate, evaluate and verify all information provided herein and any other matters deemed material. Please consult your attorney, tax advisor or other professional advisor. The terms of sale or lease set forth herein are subject to change or withdrawal at any time and without notice.

# SUITE 200 SAMPLE FLOOR PLAN

Suite	SF	Rate	Available
200A	2,777 SF	\$22.00/SF NNN	Now
200B	3,585 SF	\$22.00/SF NNN	Now



The information provided herein has been obtained from sources believed to be reliable, but no representation or warranty, express or implied, is made with respect to the accuracy or completeness of any such information. Each prospective buyer or tenant should independently investigate, evaluate and verify all information provided herein and any other matters deemed material. Please consult your attorney, tax advisor or other professional advisor. The terms of sale or lease set forth herein are subject to change or withdrawal at any time and without notice.

# CORPORATE NEIGHBORS



## LEGEND:

- 01 AT&T
- 02 Valeant Solta Medical
- 03 General Dynamics
- 04 LuxerCare
- 05 ADT Security
- 06 Google
- 07 AT&T
- 08 United Healthcare Services
- 09 Progressive, Banner Bank
- 10 HUB International
- 11 State Farm
- 12 Talentwise
- 13 Puget Sound Energy
- 14 T-Mobile