

**INDUSTRIAL
LEASE**



EVERGREEN INDUSTRIAL CENTER

19510 144th Avenue NE, Woodinville, WA

Caleb Farnworth, CCIM

425.289.2235

calebf@rosenharbottle.com

Stossi Tsantilas

425.279.7943

stossit@rosenharbottle.com

425.454.3030
rosenharbottle.com

PO Box 5003
Bellevue, WA 98009 - 5003

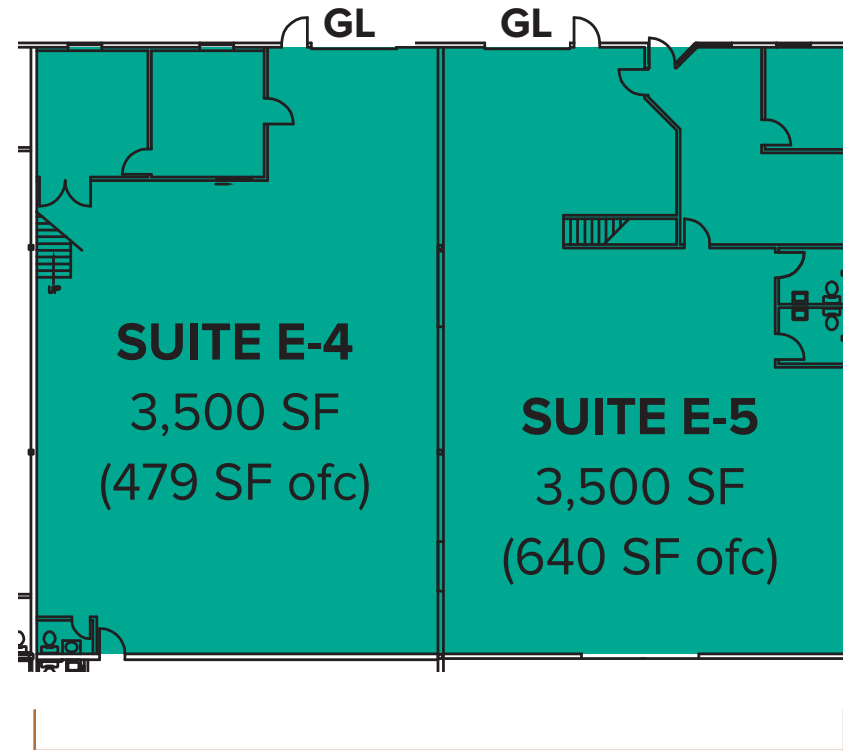


WOODINVILLE WAREHOUSE SPACES AVAILABLE

3,500 SF - 7,000 SF

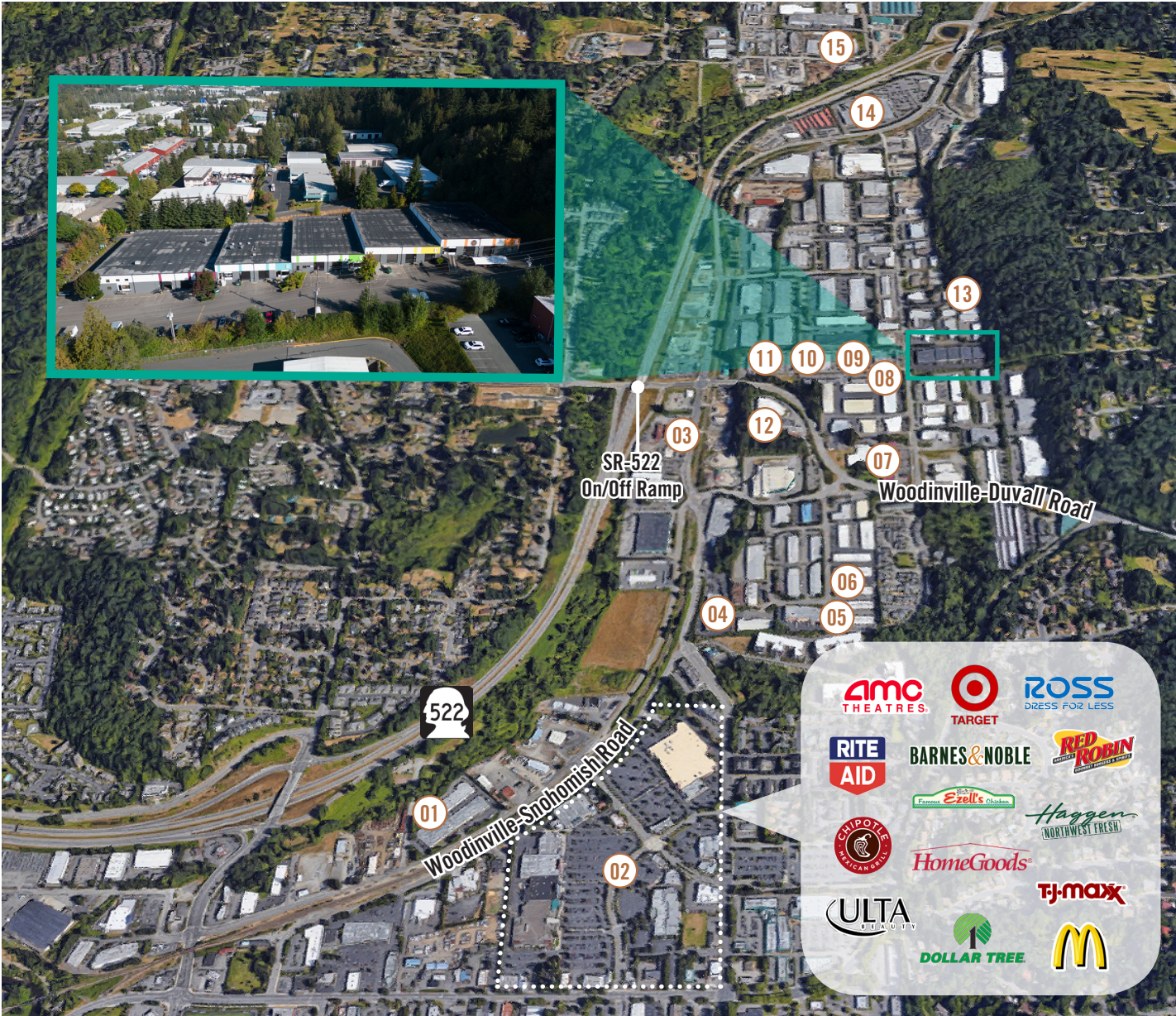
SUITE FEATURES:

- Warehouse spaces with office areas
 - Suite E-4: \$5,609/Month, NNN
 - Suite E-5: \$5,730/Month, NNN
- 20' - 24' Clear Height
- Sprinkled and 3-Phase Power
- Building signage along 144th Avenue
- Grade-level roll-up doors
- Clear span warehouses
- Quick Access to SR 522 and I-405



Contiguous: 7,000 SF (1,119 SF ofc)

LOCATION MAP



LEGEND:

- 01 Route 522 Taproom
- 02 Woodinville Town Center
- 03 Hampton Inn & Suites
- 04 Gold's Gym
- 05 Iron Cellars
- 06 The PicNic Table
- 07 Locust Cider & Brewing
- 08 Elevation Cellars
- 09 Kestrel Vintners
- 10 Patterson Cellars
- 11 Love That Red Winery
- 12 20 Corners Brewing
- 13 EFESTE
- 14 Costco
- 15 Restaurant Depot