

**OFFICE LEASE  
AVAILABLE**



# MEADOW CREEK OFFICE PARK

22500 - 22619 SE 64th Place | Issaquah, WA

**Brian Stewart**

425.289.2222

brians@rosenharbottle.com

425.454.3030  
rosenharbottle.com

PO Box 5003  
Bellevue, WA 98009 - 5003







# CLASS A OFFICE SPACES AVAILABLE

**1,440 SF - 4,759 SF Available**

## OFFICE PARK DETAILS:

- Minutes from Costco Headquarters
- Amazing Location off I-90 at Front St/E Lake Sammamish Pkwy
- Nearby Amenities Include Retailers, Grocers, Restaurants, Hospital & Parks
- Park-Like, Campus Setting with Free Surface Parking

The information provided herein has been obtained from sources believed to be reliable, but no representation or warranty, express or implied, is made with respect to the accuracy or completeness of any such information. Each prospective buyer or tenant should independently investigate, evaluate and verify all information provided herein and any other matters deemed material. Please consult your attorney, tax advisor or other professional advisor. The terms of sale or lease set forth herein are subject to change or withdrawal at any time and without notice.



# BUILDING C (22530)

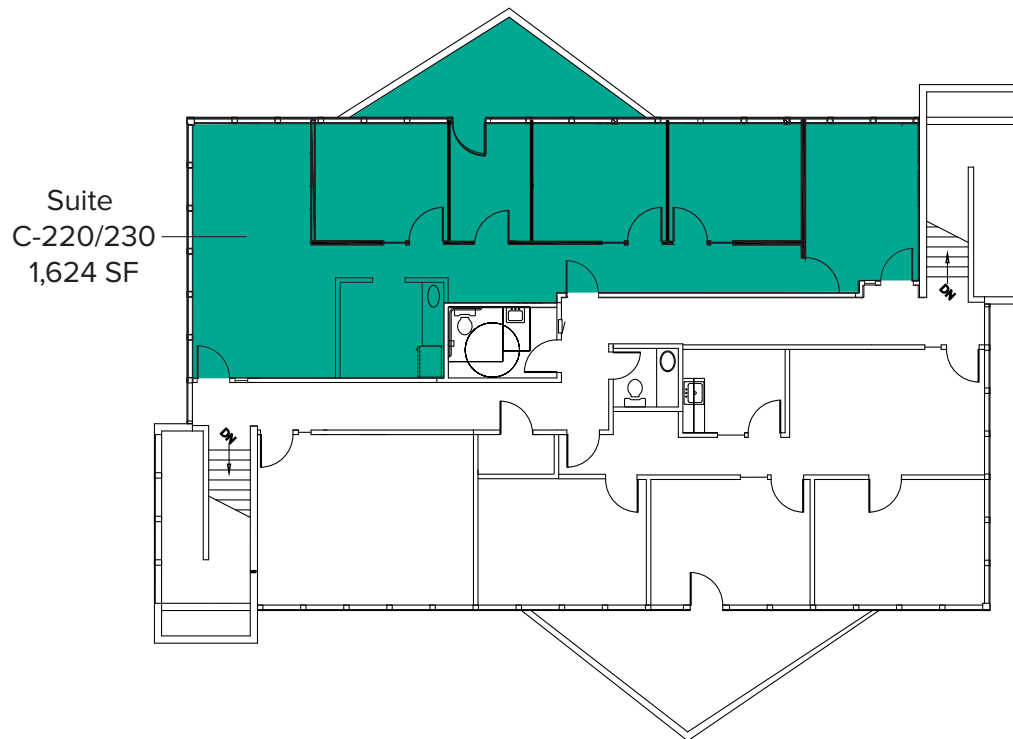
Suite	Square Feet	Rate
C-220/230	1,624 SF	\$26.00 - \$27.00*/SF, NNN

Second floor office with 4 private offices, break room with kitchenette, reception area with a customized California Closet, storage room, and a balcony.

Available for Sublease with 30 days' notice.

**\*Rate Available for Sublease Fully Executed by 4/30/2022**

**Broker Bonus for Sublease: \$2.00/SF/YR**



The information provided herein has been obtained from sources believed to be reliable, but no representation or warranty, express or implied, is made with respect to the accuracy or completeness of any such information. Each prospective buyer or tenant should independently investigate, evaluate and verify all information provided herein and any other matters deemed material. Please consult your attorney, tax advisor or other professional advisor. The terms of sale or lease set forth herein are subject to change or withdrawal at any time and without notice.

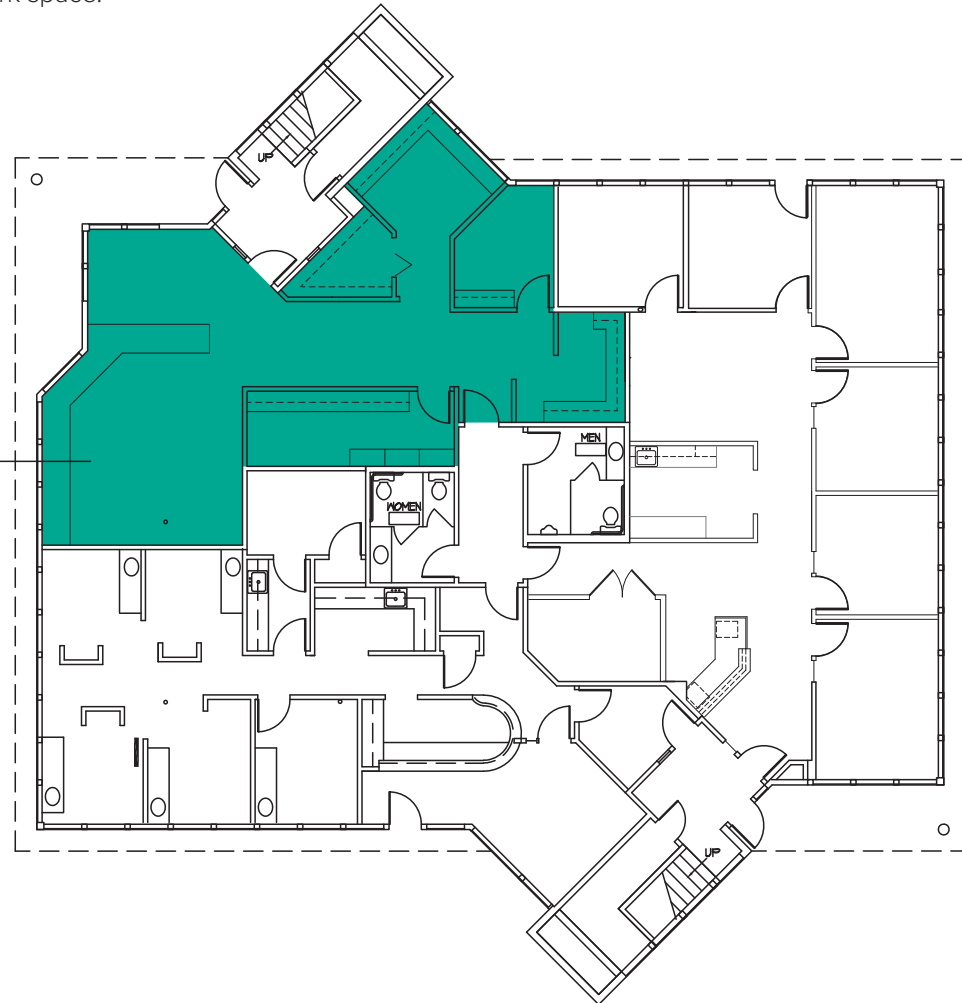
# BUILDING D (22526)

## FIRST LEVEL FLOOR PLAN

Suite	Square Feet	Rate
D-140	1,440 SF	\$28.00/SF, NNN

First floor office with 1 private room, reception area, break room, and open work space.  
**Available Now.**

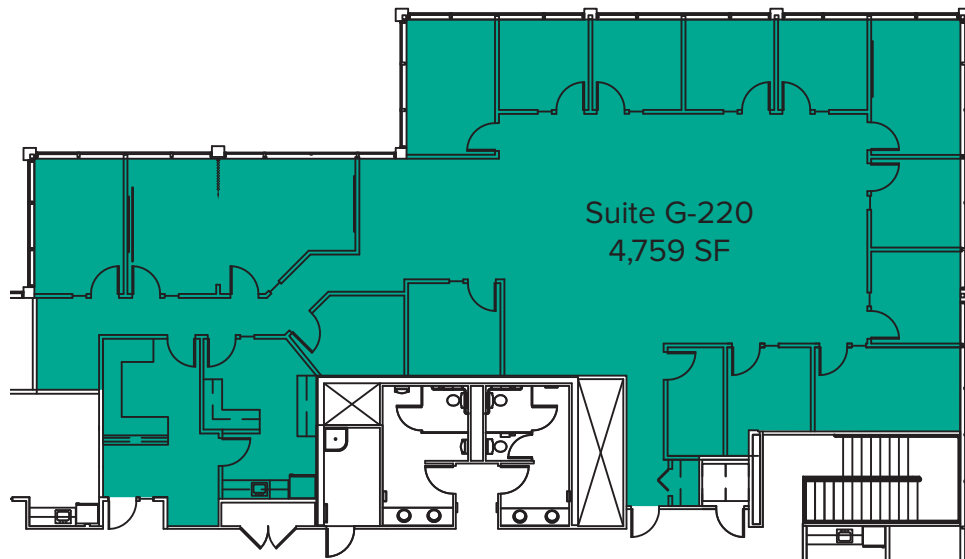
Suite D-140  
1,440 SF



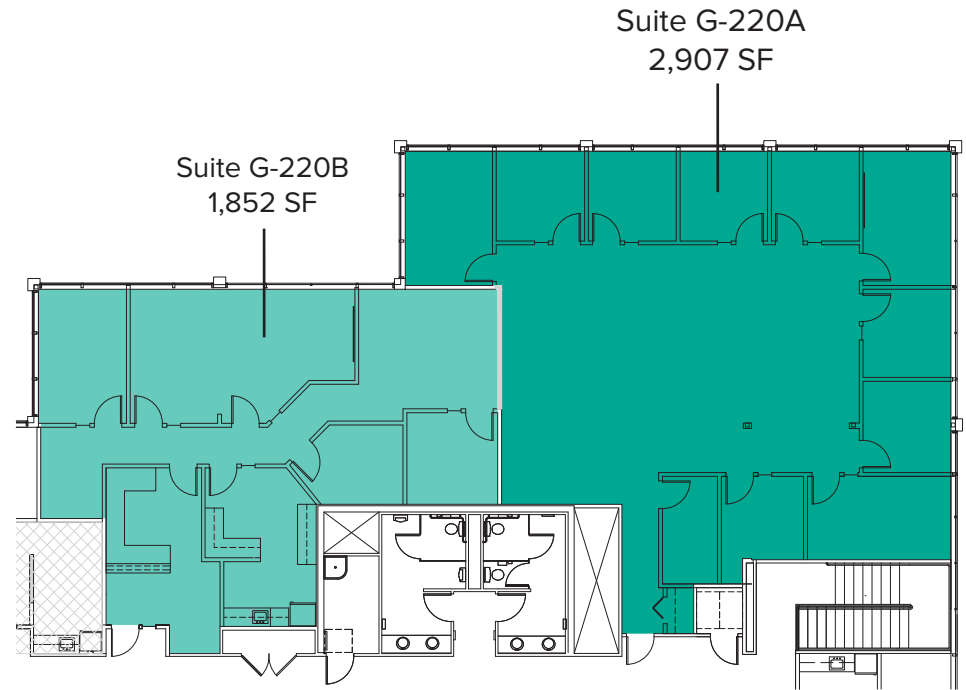
The information provided herein has been obtained from sources believed to be reliable, but no representation or warranty, express or implied, is made with respect to the accuracy or completeness of any such information. Each prospective buyer or tenant should independently investigate, evaluate and verify all information provided herein and any other matters deemed material. Please consult your attorney, tax advisor or other professional advisor. The terms of sale or lease set forth herein are subject to change or withdrawal at any time and without notice.

# BUILDING G (22500) SECOND LEVEL FLOOR PLAN

Suite	Square Feet	Rate	Notes
G-220	1,852 SF - 4,759 SF	\$29.00/SF, NNN	Second floor office with private rooms, conference room, reception/lobby area, break room with a kitchenette, and 2 entrances. Space is divisible. <b>Available with 60 days' notice.</b>



As-Is Floor Plan



Sample Floor Plan

The information provided herein has been obtained from sources believed to be reliable, but no representation or warranty, express or implied, is made with respect to the accuracy or completeness of any such information. Each prospective buyer or tenant should independently investigate, evaluate and verify all information provided herein and any other matters deemed material. Please consult your attorney, tax advisor or other professional advisor. The terms of sale or lease set forth herein are subject to change or withdrawal at any time and without notice.



# SITE PLAN





# LOCATION MAP

