



# EASTLAKE BUSINESS PARK, Buildings A, D & E

18336-18398 Redmond-Fall City Road | Redmond, WA 98052

**Caleb Farnworth, CCIM**

425.289.2235

[calebf@rosenharbottle.com](mailto:calebf@rosenharbottle.com)

**Stossi Tsantilas**

425.279.7943

[stossit@rosenharbottle.com](mailto:stossit@rosenharbottle.com)

425.454.3030  
[rosenharbottle.com](http://rosenharbottle.com)

PO Box 5003  
Bellevue, WA 98009 - 5003





# EASTSIDE INDUSTRIAL SPACES WITH OFFICE

**2,193 SF - 4,934 SF Available**

**\$1.75/SF - \$2.08/SF, NNN**

## PROPERTY DETAILS:

- Professional, Business Park Setting
- Quick Access to SR 520, Union Hill & Downtown Redmond
- Nearby Amenities Include Home Depot, Whole Foods, Chipotle, Target, Kohl's, Costco & More
- Located Minutes From Future Light Rail Stations

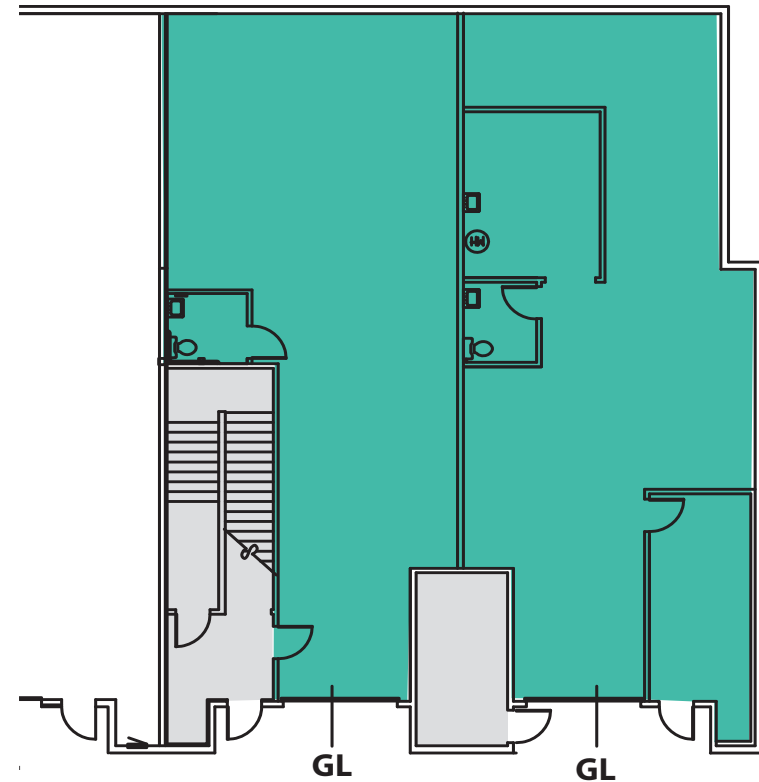
The information provided herein has been obtained from sources believed to be reliable, but no representation or warranty, express or implied, is made with respect to the accuracy or completeness of any such information. Each prospective buyer or tenant should independently investigate, evaluate and verify all information provided herein and any other matters deemed material. Please consult your attorney, tax advisor or other professional advisor. The terms of sale or lease set forth herein are subject to change or withdrawal at any time and without notice.

# BUILDING A FLOOR PLAN

## SUITE 18356 & 18352 FEATURES

- **Available Now**
- **3,351 SF (285 SF ofc)**
- **\$2.08/SF Blended, NNN**
- Industrial Space with Office Area
- Space has been upgraded to pass the FDA requirements for food production
- Plumbing and drainage exists in warehouse for kitchen
- 1 Private Office
- 2 Restrooms
- 2 Grade-Level Roll-Up Doors

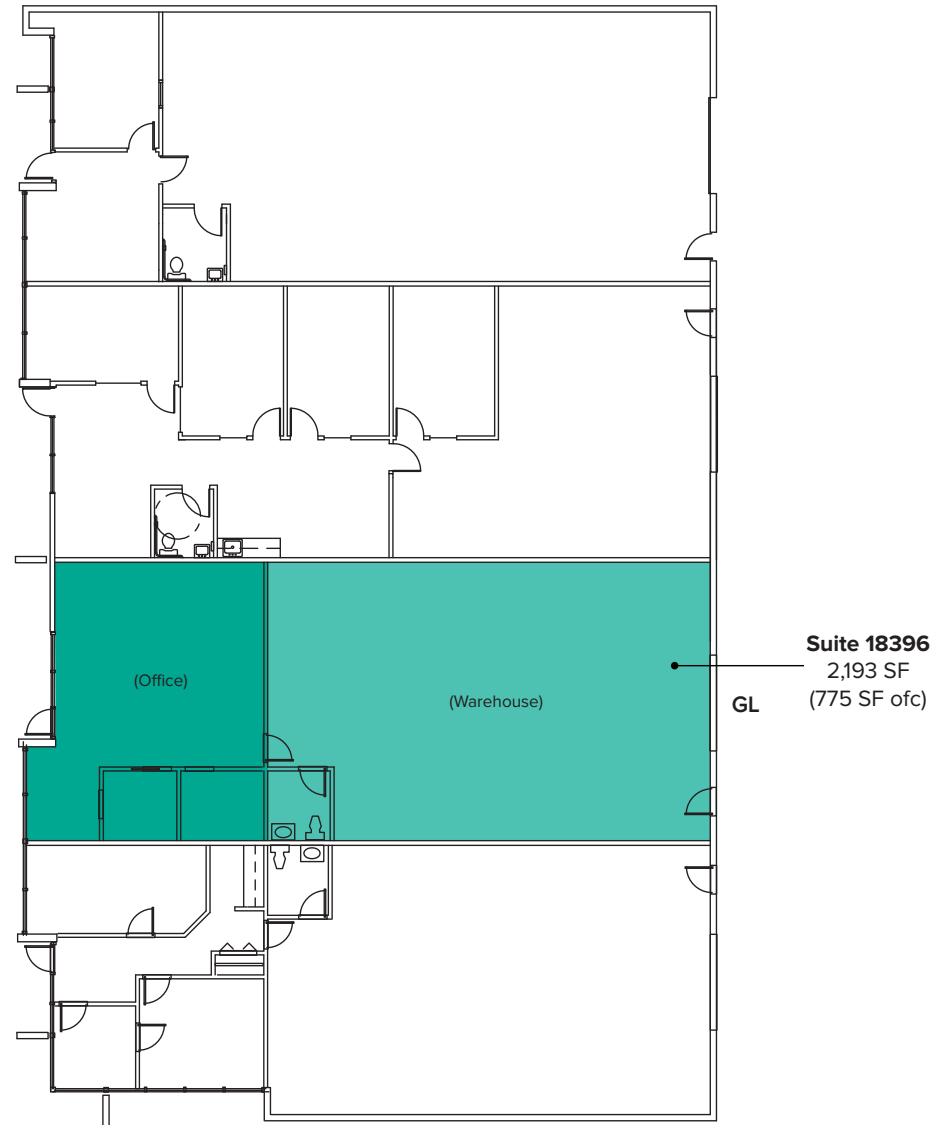
**Suite  
18356 & 18352  
3,351 SF**



# BUILDING D FLOOR PLAN

## SUITE 18396 FEATURES

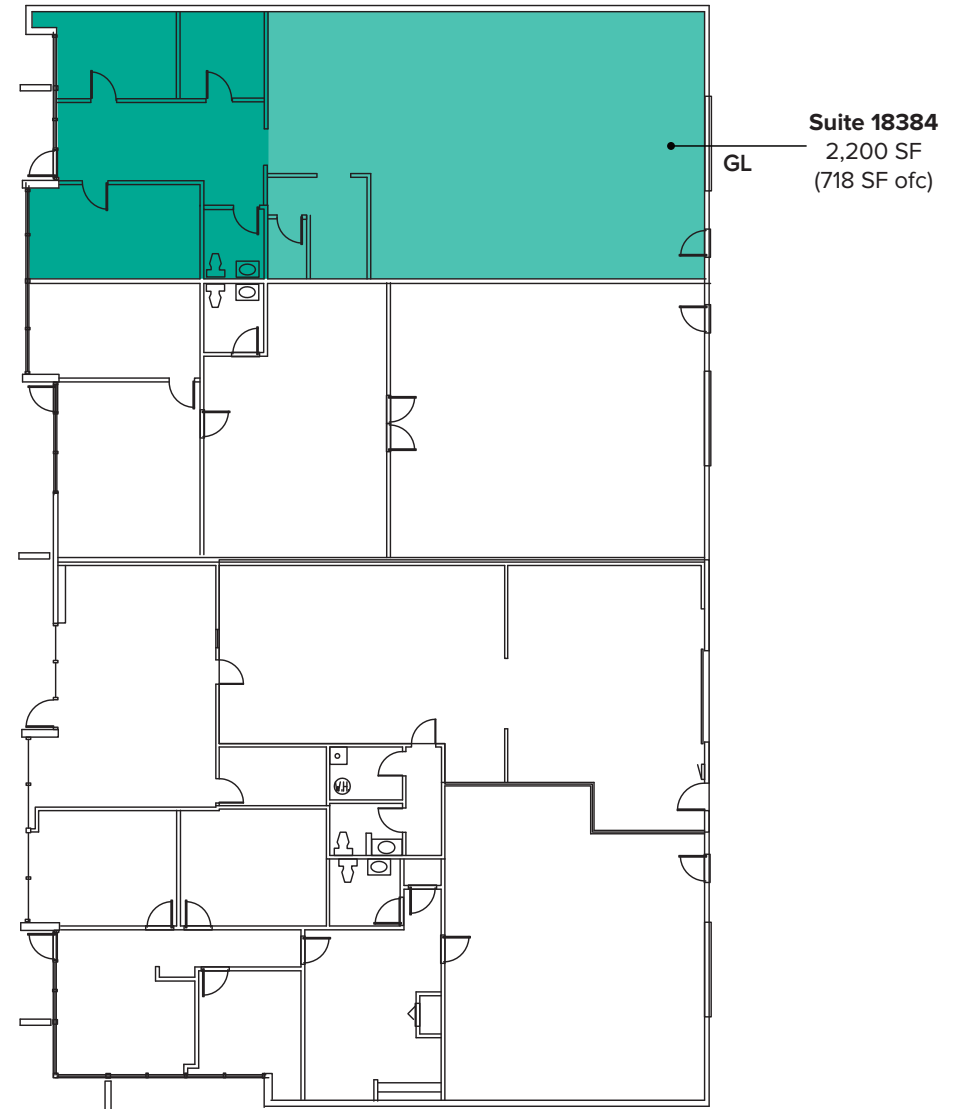
- Available Now for Sublease
- 2,193 SF (775 SF ofc)
- \$1.75/SF, NNN
- Can be Leased with Non-Contiguous Suite 18384 for Total of 4,393 SF
- Industrial Space
- Open Front Office Area
- 2 Private Offices
- 1 Restroom
- 1 Grade-Level Roll-up Loading Door
- 14' - 16' Clear Height in Warehouse



# BUILDING E FLOOR PLAN

## SUITE 18384 FEATURES

- Available Now for Sublease
- 2,200 SF (718 SF ofc)
- \$1.75/SF, NNN
- Can be Leased with Non-Contiguous Suite 18396 for Total of 4,393 SF
- Industrial Space
- Front Office Area
- 3 Private Offices
- 1 Restroom
- 1 Grade-Level Roll-up Loading Door
- 14' - 16' Clear Height in Warehouse



# LOCATION MAP

