

Rainier Professional Plaza

Class A office space available with generous tenant improvement packages

18209 HWY 410, BONNEY LAKE, WA





Building & Monument Signage Available with Visibility from Hwy 410



\$28.00/SF, NNN



Suite 100: 5,431 - 10,872 SF
Suite 200: 2,500 - 10,862 SF
Suite 100 & 200: 21,724 SF
Suite 306: 2,890 SF



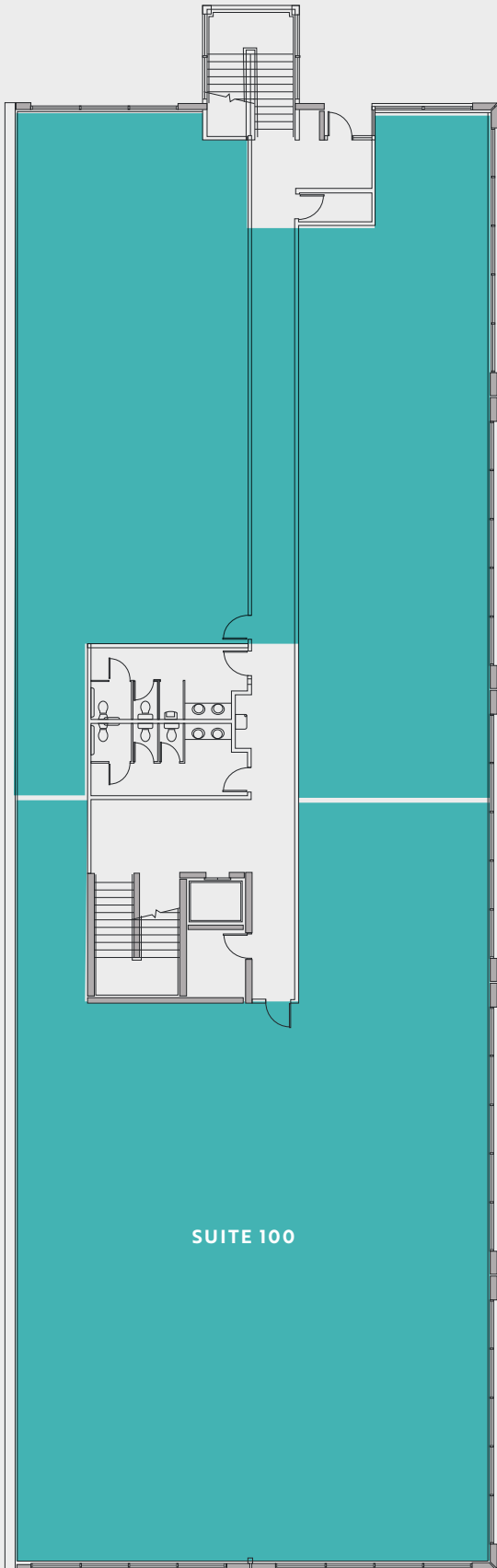
Building signage & monument signage



Visibility from Route 410, high density 41,000 VPD

1st Floor

RAINIER PROFESSIONAL PLAZA



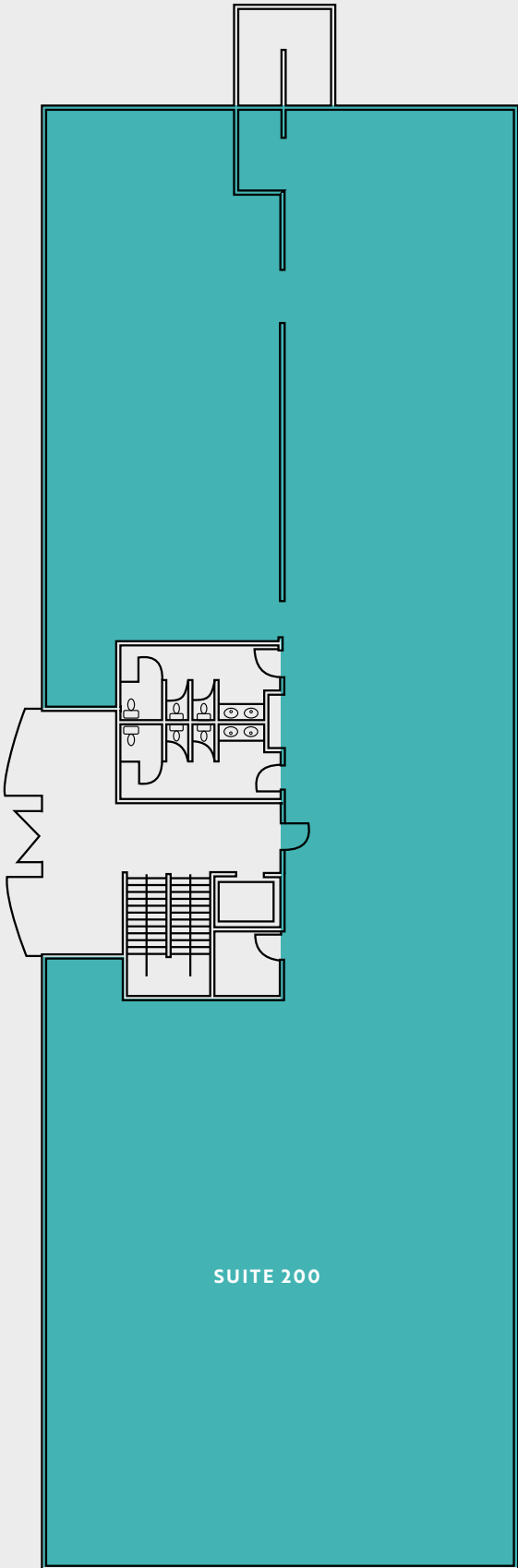
Suite	Size
100	5,431 - 10,872 SF
100 & 200	21,724 SF

Availabilities



2nd Floor

RAINIER PROFESSIONAL PLAZA



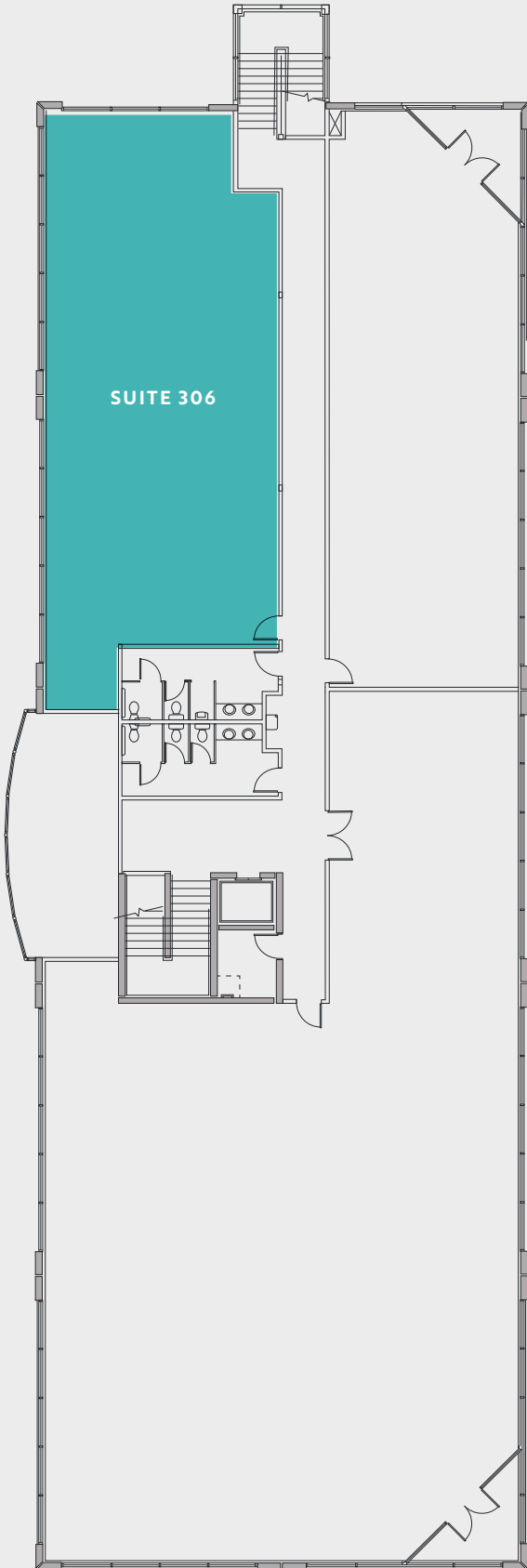
Suite	Size
200	2,500 - 10,862 SF
100 & 200	21,724 SF

Availabilities



3rd Floor

RAINIER PROFESSIONAL PLAZA



Suite

306

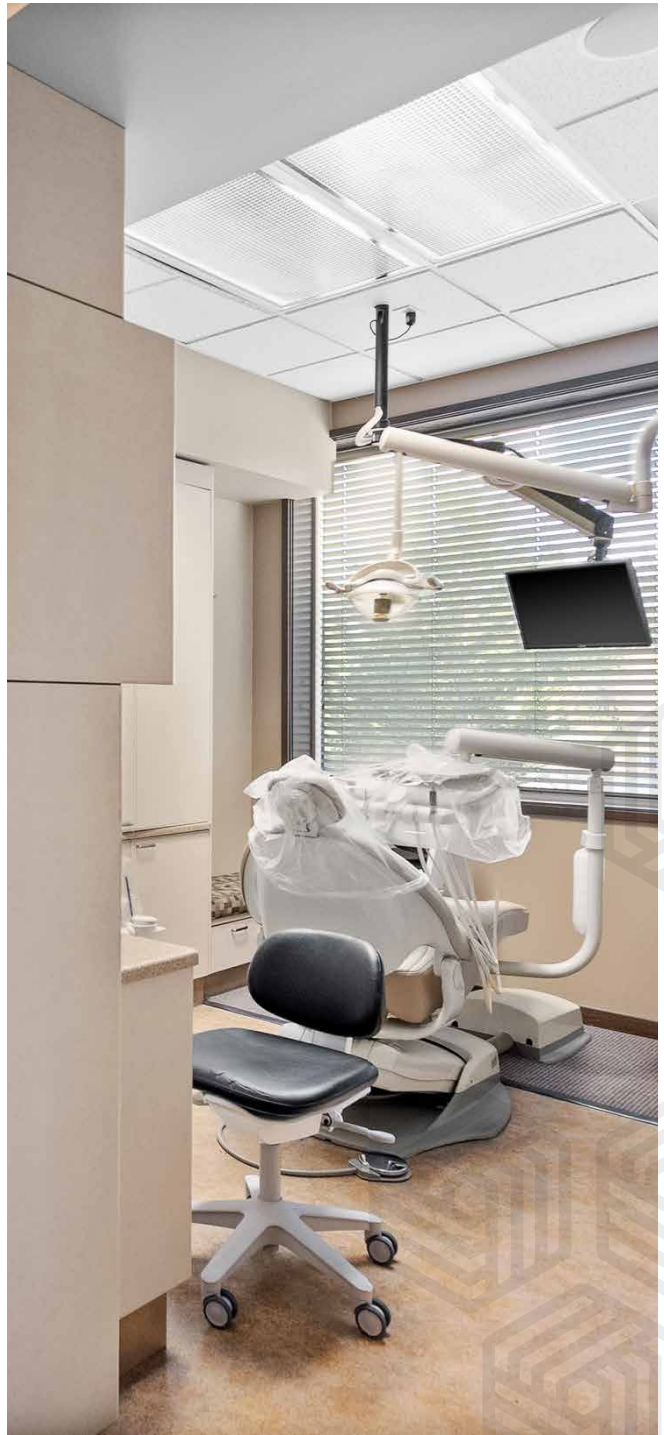
Size

2,890 SF

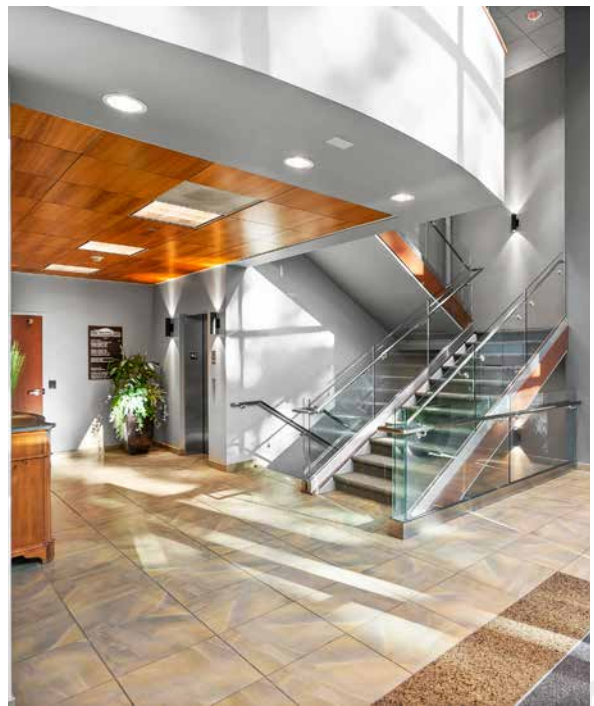
Availabilities



Photos



Photos





Rainier Professional Plaza

18209 HWY 410 | BONNEY LAKE, WA

WILL FRAME

253.722.1412

will.frame@kidder.com

DREW FRAME

253.722.1433

drew.frame@kidder.com



ROSEN HARBOTTLE
COMMERCIAL REAL ESTATE

Leasing by



**Kidder
Mathews**

This information supplied herein is from sources we deem reliable. It is provided without any representation, warranty, or guarantee, expressed or implied as to its accuracy. Prospective Buyer or Tenant should conduct an independent investigation and verification of all matters deemed to be material, including, but not limited to, statements of income and expenses. Consult your attorney, accountant, or other professional advisor.

KIDDER.COM